



Vicentia Court, Bridges Wharf

Battersea, SW11 3GY

PROPERTY SUMMARY

This beautiful bright and spacious one bedroom apartment has just become available to let, set on the seventh floor of Vicentia Court, part of the award-winning Bridges Wharf Riverside development. The property comprises one spacious double bedroom, bathroom, bright contemporary open plan kitchen/living space with a balcony, offering exceptional uninterrupted views over the River Thames.

1



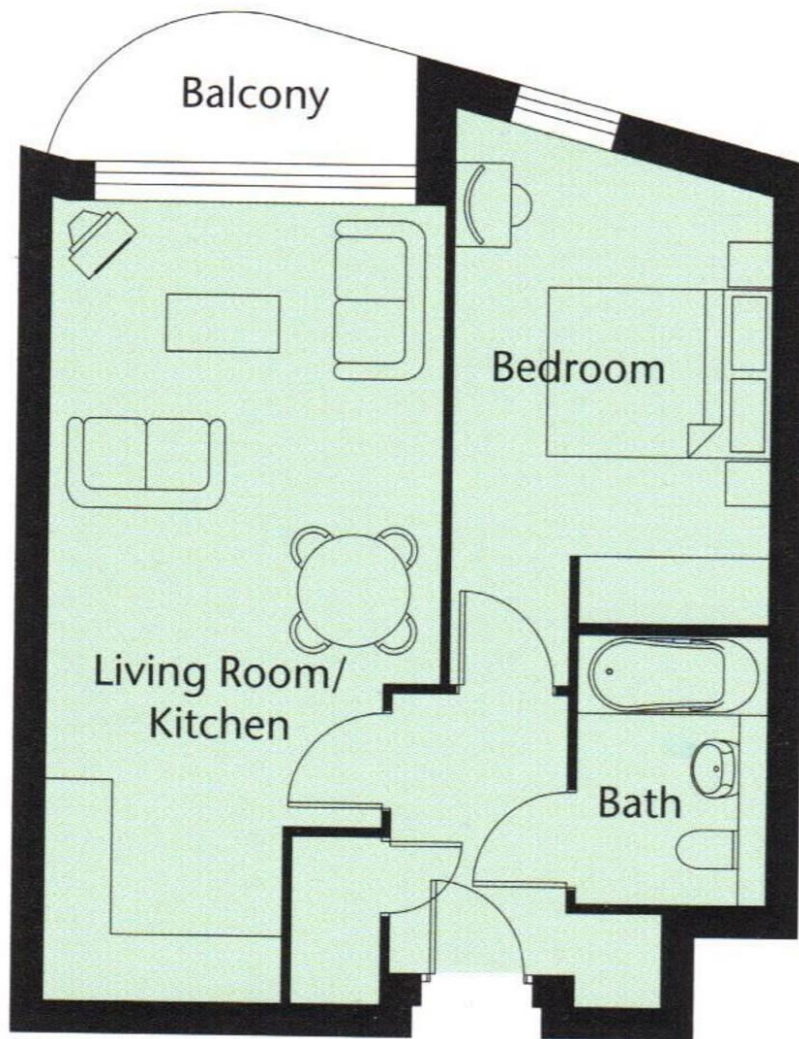
1



1





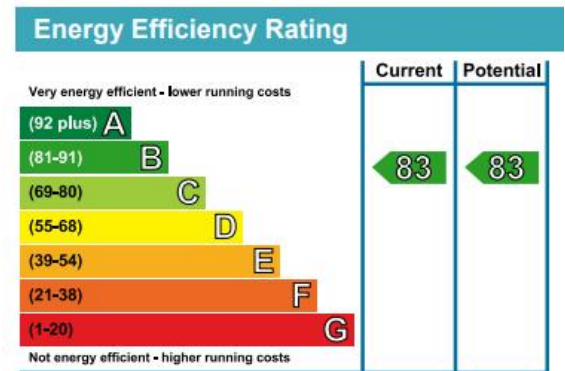


LOCAL AUTHORITY
Wandsworth Borough Council

TENURE
Leasehold

COUNCIL TAX BAND
Band E

VIEWINGS
By prior appointment only



Agents Note: Whilst every care has been taken to prepare these particulars, they are for guidance purposes only. All measurements are approximate and are for general guidance purposes only and whilst every care has been taken to ensure their accuracy, they should not be relied upon and potential buyers/tenants are advised to recheck the measurements



4 Vicentia Court
Bridges Wharf
London
SW11 3GY

02073522455
info@hgproperty.co.uk
www.hgproperty.co.uk