

Kingfisher House
Juniper Drive, SW18 1TX

PROPERTY SUMMARY

One of the largest three bedroom apartments in Battersea Reach, benefiting from a private terrace and superb views. Available on an unfurnished basis with one secure underground parking space.

3



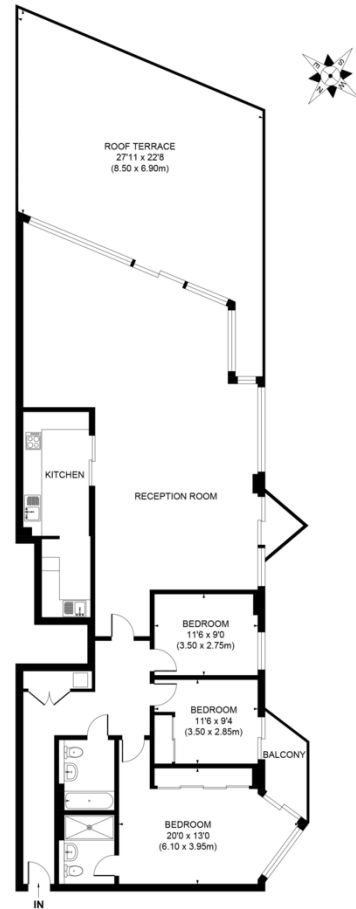
2



1







APPROX. GROSS INTERNAL FLOOR AREA 1690 SQ. FT / 160 SQ. M

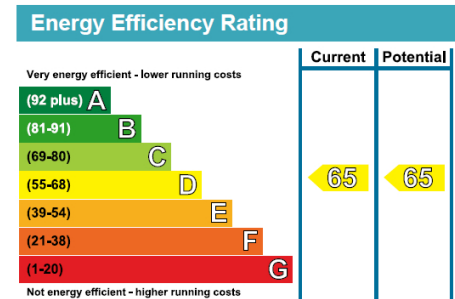
Illustration for identification purpose only, not to scale.
All measurements are maximum, and includes wardrobes and window bays where applicable.
Prepared by Pixangle ©. Tel 020 8870 2118

LOCAL AUTHORITY
Wandsworth Borough Council

TENURE

COUNCIL TAX BAND
Band H

VIEWINGS
By prior appointment only



Agents Note: Whilst every care has been taken to prepare these particulars, they are for guidance purposes only. All measurements are approximate and are for general guidance purposes only and whilst every care has been taken to ensure their accuracy, they should not be relied upon and potential buyers/tenants are advised to recheck the measurements



4 Vicentia Court
Bridges Wharf
London
SW11 3GY

02073522455
info@hgproperty.co.uk
www.hgproperty.co.uk