



GUIDE PRICE  
**£480,000**  
**Orbis Wharf**  
London, SW11 3GW

## PROPERTY SUMMARY

An attractive two bedroom apartment with private balcony and river views, in this award winning riverside development. Set on the fourth floor, comprising an open plan kitchen/reception room and two generously proportioned double bedrooms, a well-appointed bathroom and private balcony overlooking the communal courtyard garden and the river Thames.

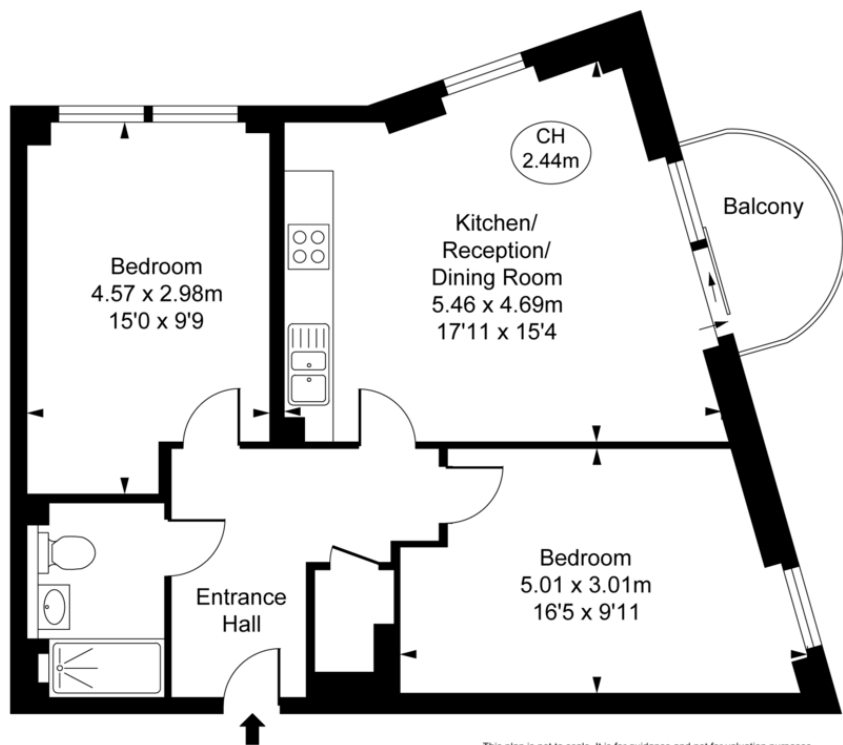
2 

1 

1 







Orbis Wharf,  
 Bridges Wharf, SW11  
 Approximate Gross Internal Area  
 61.44 sq m / 661 sq ft  
 ( CH = Ceiling Heights )



Fourth Floor

This plan is not to scale. It is for guidance and not for valuation purposes.  
 All measurements and areas are approximate only, and have been prepared in accordance with the current edition of the RICS Code of Measuring Practice.  
 © Fulham Performance

**LOCAL AUTHORITY**

Wandsworth Borough Council

**TENURE**

Leasehold

**COUNCIL TAX BAND**

Band E

**VIEWINGS**

By prior appointment only

Score	Energy rating	Current	Potential
92+	A		
81-91	B	81 B	82 B
69-80	C		
55-68	D		
39-54	E		
21-38	F		
1-20	G		

Agents Note: Whilst every care has been taken to prepare these particulars, they are for guidance purposes only. All measurements are approximate and are for general guidance purposes only and whilst every care has been taken to ensure their accuracy, they should not be relied upon and potential buyers/tenants are advised to recheck the measurements



4 Vicentia Court  
 Bridges Wharf  
 London  
 SW11 3GY

02073522455  
 info@hgproperty.co.uk  
 www.hgproperty.co.uk