



H&G

*Ensign*  
HOUSE

# *Ensign* HOUSE

---

A smart and well-presented two bedroom apartment located in the award winning Battersea Reach riverside development.

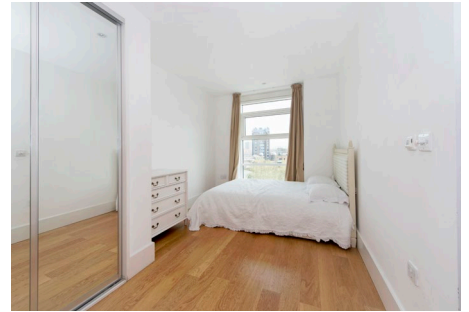
The property offers an easterly aspect with views across to the River Thames comprising two bedrooms, two bathrooms, open plan kitchen/reception room and private balcony.

The property has floor-to-ceiling windows throughout providing plenty of natural light. The kitchen area is open to the reception room but separated by a useful breakfast bar. The living room is spacious with ample space for both dining and living areas.

In the hallway there is a useful utility cupboard housing a washer dryer and storage space.

To Let.  
Unfurnished. Parking for one car.



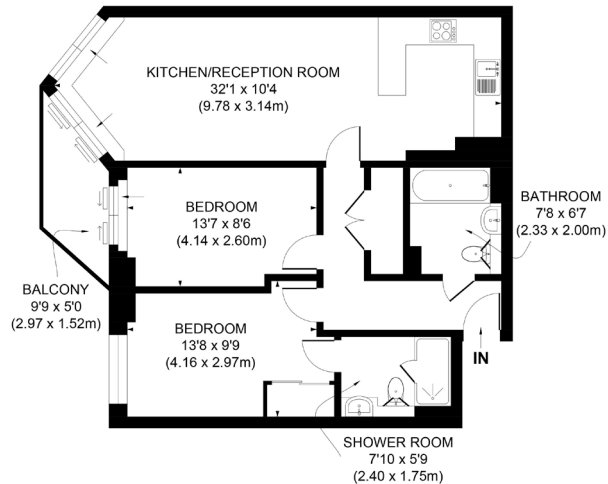


# Battersea REACH



Battersea Reach offers a 24hr concierge service, residents gymnasium, coffee and cake shop, Tesco Express and a Young's riverside bar and restaurant. Fashionable Old York Road with its boutiques, cafes, restaurants and shops is within close proximity.

Local transport links are provided by Wandsworth Town or Clapham Junction Station (National Rail) for connections into and out of central London with buses providing access across the river to Fulham and Chelsea. A Thames Clipper river taxi service is now in operation with the pier located just a few hundred yards away.



## H&G

020 7352 2455

info@hgproperty.co.uk

www.hgproperty.co.uk

4 Vicentia Court, Bridges Wharf

APPROX. GROSS INTERNAL FLOOR AREA 780 SQ. FT / 72.42 SQ. M

Illustration for identification purpose only, not to scale  
All measurements are maximum, and includes wardrobes and window bays where applicable  
Prepared by Pixangle ©. Tel 020 8870 2118