

Bridges Court Road
London, SW11 3GY

PROPERTY SUMMARY

An 'as new' light and airy one bedroom apartment with balcony, part river view and underground parking in this popular Battersea development. The apartment is in immaculate condition having been sparingly used. Neutrally decorated throughout it offers contemporary living accommodation comprising open plan kitchen/reception room, generous double bedroom, bathroom, storeroom and balcony.

1



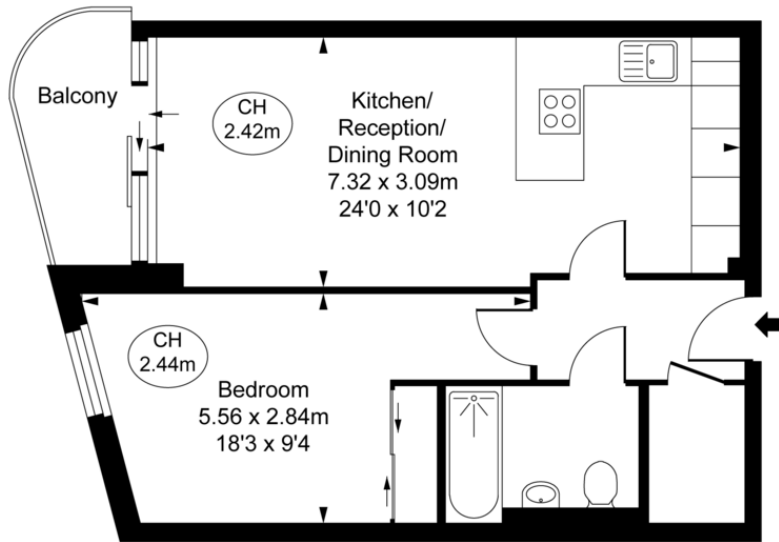
1



1







Vicentia Court,
Bridges Court Road, SW11
Approximate Gross Internal Area
45.49 sq m / 490 sq ft
(CH = Ceiling Heights)

Third Floor

This plan is not to scale. It is for guidance and not for valuation purposes.
All measurements and areas are approximate only, and have been prepared in accordance with the current edition of the RICS Code of Measuring Practice.
© Fulham Performance

LOCAL AUTHORITY
Wandsworth Borough Council

TENURE
Leasehold

COUNCIL TAX BAND
Band E

VIEWINGS
By prior appointment only

Score	Energy rating	Current	Potential
92+	A		
81-91	B		81 B
69-80	C	80 C	
55-68	D		
39-54	E		
21-38	F		
1-20	G		

Agents Note: Whilst every care has been taken to prepare these particulars, they are for guidance purposes only. All measurements are approximate and are for general guidance purposes only and whilst every care has been taken to ensure their accuracy, they should not be relied upon and potential buyers/tenants are advised to recheck the measurements



4 Vicentia Court
Bridges Wharf
London
SW11 3GY

02073522455
info@hgproperty.co.uk
www.hgproperty.co.uk