



44 Fairwood Drive, Wrexham, LL11 4DE

£300,000

A Stunning four-bedroom detached home nestled in a quiet corner of the popular Ty Newydd estate in Gwersyllt.

This attractive property features an entrance hall leading to the generous lounge, positioned at the front of the house and the impressive open plan kitchen/dining room at the rear of the property, with French doors leading to the rear garden, A Utility Room and Cloakroom to the ground floor.

On the first floor there a 4 spacious bedrooms, one with ensuite and a Family bathroom

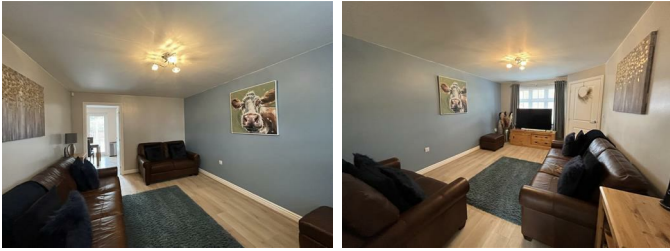
This property comes with ample parking leading to an integral garage and an enclosed landscaped garden to the rear.

Viewing is essential to appreciate all this property has to offer. Don't miss out call Olivegrove today on 01978 750234.

Entrance Hallway

Stairs rising, door off to:

Living Room 15'8" x 10'7" (4.80 x 3.24m)



UPVC double glazed window to front elevation, Wood effect laminate flooring, Radiator, Light fitting, Sockets & Switches.

Kitchen / Diner 17'0" x 10'0" (5.20 x 3.06m)



UPVC Double glazed Window and French doors to rear elevation. Wood effect vinyl floor, Part tiled walls, Radiator, 2 x light fittings. A range of base, wall and drawer units with complimentary worktop over and inset stainless steel sink. Built in fridge freezer, microwave, oven and gas hob with extractor over. Understairs cupboard and door to:

Utility Room 6'2" x 6'1" (1.89 x 1.86m)



Part glazed door to rear elevation, Wood effect

vinyl floor, Radiator. Base unit with space either side for washing machine and tumble dryer, worktop over with stainless steel sink and cupboard housing the boiler. Door to:

Cloakroom 6'2" x 3'1" (1.89 x 0.94m)

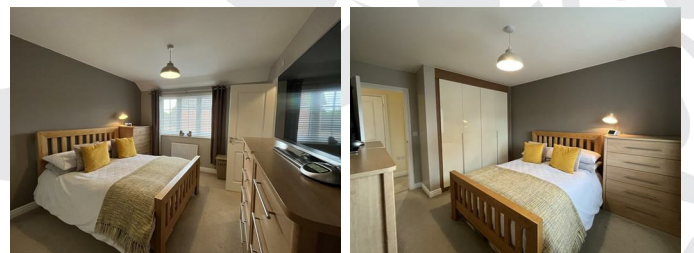


UPVC double glazed window to side elevation, Wood effect vinyl floor, Radiator. Close coupled WC and wall mounted basin with tiled splashback.

Stairs / Landing

Carpet to floor, access to part board attic, airing cupboard housing sealed system tank and doors off to:

Bedroom 1 10'7" x 12'11" (3.24 x 3.95m)



UPVC double glazed window to front elevation, Carpet to floor, Fitted wardrobes, Radiator, Light fitting, Sockets & Switches. Door to:

Ensuite 5'8" x 5'5" (1.73 x 1.67m)



UPVC double glazed window to front elevation, Vinyl flooring, tiled shower enclosure with glass door and mains powered shower. Wall mounted basin with tiled splashback and close coupled WC. Heated towel rail, Extractor and Light fitting.

Bedroom 2 8'10" x 12'10" (2.70 x 3.92m)



UPVC double glazed window to rear elevation, Carpet to floor, Fitted wardrobes, Radiator, Light fitting, Sockets & Switches.

Bedroom 3 9'6" x 12'3" max (2.90 x 3.74m max)



UPVC double glazed window to front elevation, Carpet to floor, Radiator, Light fitting, Sockets & Switches.

Bedroom 4 12'2" x 8'1" (3.73 x 2.47m)



UPVC double glazed window to rear elevation, Carpet to floor, Radiator, Light fitting, Sockets & Switches.

Family Bathroom 8'8" x 6'0" (2.66 x 1.83m)



UPVC double glazed window to rear elevation, Vinyl flooring, Part tiled walls. Panelled Bath with mains powered shower over, Wall mounted basin with tiled splashback and close coupled WC. Heated towel rail, Extractor and light fitting.

Externally

Front

To the front of the property is a driveway, gravelled and paved areas offering ample off road parking.

Rear



To the rear there is a spacious patio area with security lights, outdoor sockets and tap, leading on to a lawned area bounded by fence panels and mature shrubs.



Floor Plan

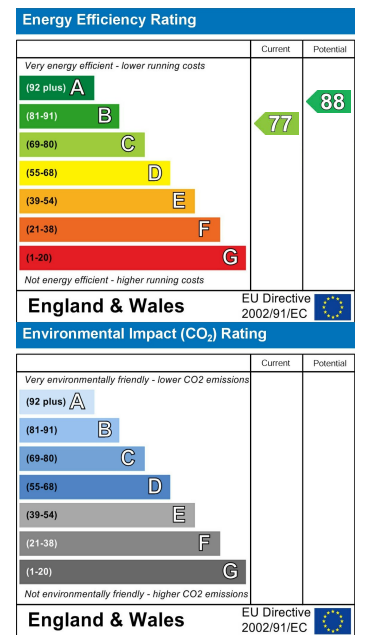


All measurements are approximate and for display purposes only

Area Map



Energy Efficiency Graph



These particulars, whilst believed to be accurate are set out as a general outline only for guidance and do not constitute any part of an offer or contract. Intending purchasers should not rely on them as statements of representation of fact, but must satisfy themselves by inspection or otherwise as to their accuracy. No person in this firm's employment has the authority to make or give any representation or warranty in respect of the property.