

Buy. Sell. Rent. Let.



Humberston Avenue, Humberston



3



2



2

When it comes to  
property it must be

  
lovelle



£475,000



Lovelle are delighted to bring to the market this superbly presented THREE bedroom detached family home on the highly regarded Humberston Avenue. Internal viewing is a must!

### Key Features

- Beautiful Detached Dormer Bungalow
- Superb Kitchen/Diner
- Two Reception Rooms
- Ground Floor Bedroom
- Jack and Jill Shower Room & Family Bathroom
- Double Garage
- CCTV System
- Ample Off Road Parking
- Private Rear Garden
- EPC rating D
- Tenure: Freehold





Lovelle are delighted to bring to the market this superbly presented THREE bedroom detached family home on the highly regarded Humberston Avenue. Internal viewing is a must!

This exquisite detached home offers extensive accommodation including; entrance porch, beautifully presented and spacious entrance hall, a formal lounge, second reception room to the rear, well fitted kitchen/diner, utility room, cloakroom, spacious master bedroom with walk in wardrobe and a family bathroom to the ground floor. Ascending to the first floor there are two double bedrooms with a jack and jill shower room. Gas central heating and double glazing throughout, with the added benefit of a Housing a CCTV security system.

The property stands well back from the road and has a generously sized driveway providing ample off road parking.

The private rear garden, Secured by double gates leading to the detached double garage, is landscaped and offers the perfect setting for outside dining and entertaining. To the front aspect secured by double electric gates.

Don't miss the chance to experience this stunning dormer bungalow, with it's spacious living areas, and beautiful outdoor spaces, contact us today for a viewing.

## Entrance Hall

### Lounge

3.71m x 6.51m (12'2" x 21'5")

### Sitting Room / Office

3.41m x 7.78m (11'2" x 25'6")

### Kitchen

4.24m x 5.18m (13'11" x 17'0")

### Utility Room

1.40m x 2.24m (4'7" x 7'4")

### Cloakroom

### Bedroom

4.29m x 5.21m (14'1" x 17'1")

## Family Bathroom

2.44m x 3.99m (8'0" x 13'1")

## Bedroom

3.86m x 5.03m (12'8" x 16'6")

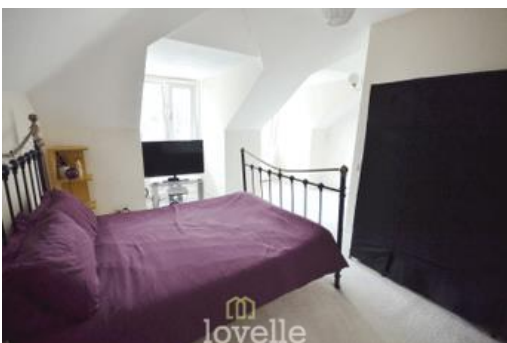
## Bedroom

3.56m x 4.47m (11'8" x 14'8")

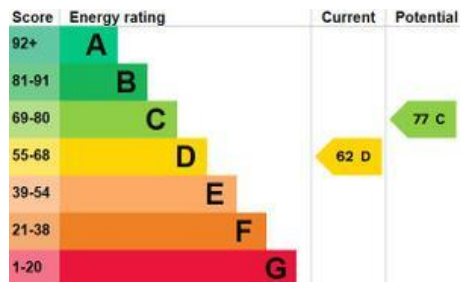
## Jack and Jill Shower Room

## Detached Garage

5.05m x 5.89m (16'7" x 19'4")







When it comes to **property**  
it must be

01472 812250

humberston@lovelle.co.uk

