



DAIRY COTTAGE/THE STABLES RACES FARM ASTON TIRROLD, OX11 9DJ

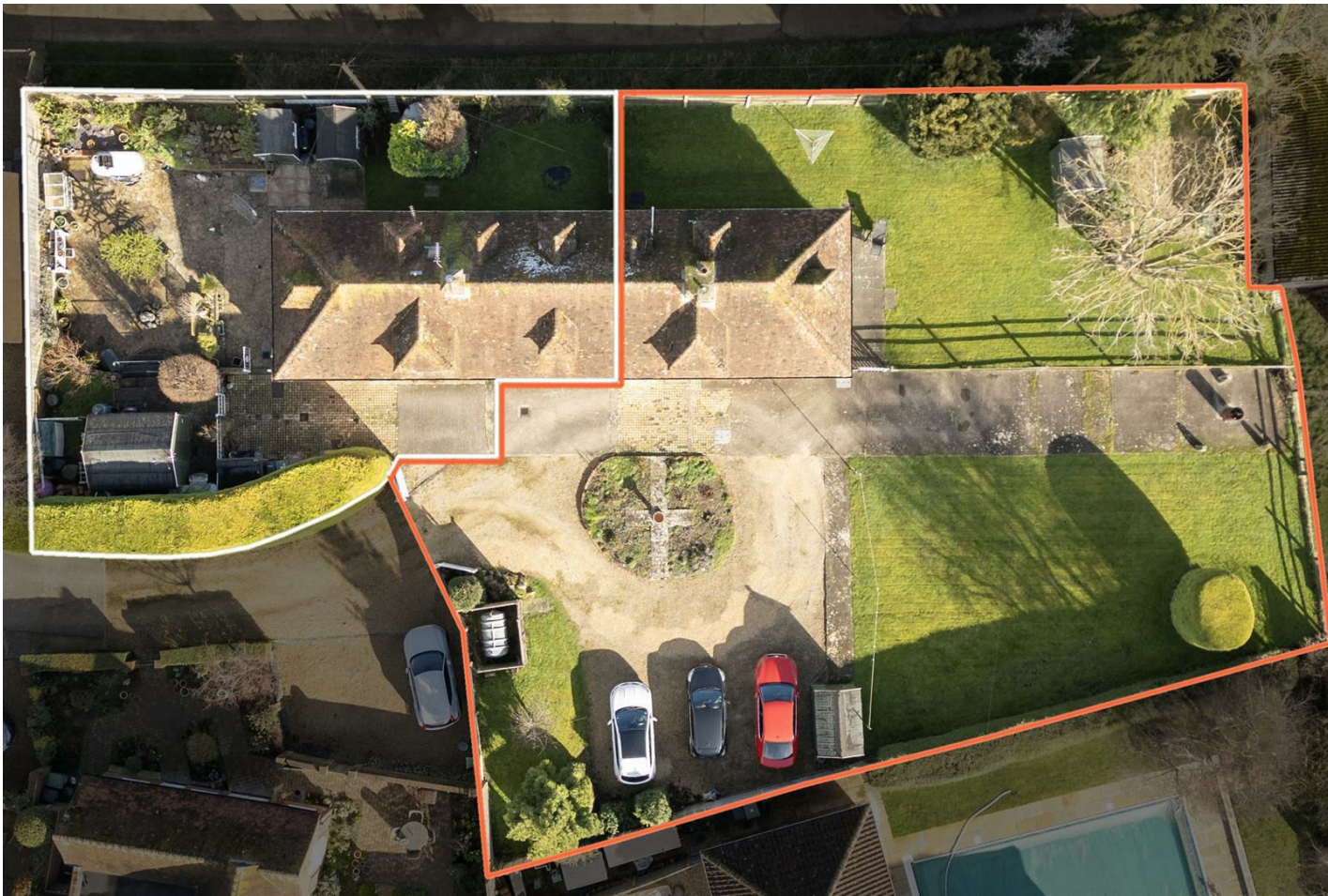
£1,025,000
FREEHOLD

In our opinion a great opportunity to acquire two separate semi detached properties both listed at £600,000, set in an enviable location within in the sought after village of Aston Tirrold ideally situated for access to Wallingford, Didcot Town centre, circa 4.4 miles to Didcot Parkway Station and just c.3.7 miles to Cholsey train station. Call William Jones on 01235 812229 for more information.

The Stables is one half of the existing block, and it is joined by Dairy cottage, which is also being marketed and in total could provide an exciting opportunity to enhance, convert or extend, subject to the usual planning consents. The Astons are thriving villages that sit between Didcot and Wallingford and are situated ideally for excellent commuter links with the nearest mainline station of Didcot Parkway less than 5 miles away.

William | Jones

Estate Agents



Agents Note: Whilst every care has been taken to prepare these particulars, they are for guidance purposes only. All measurements are approximate and are for general guidance purposes only and whilst every care has been taken to ensure their accuracy, they should not be relied upon and potential buyers/tenants are advised to recheck the measurements

Didcot Office Sales
210 Broadway
Didcot
Oxfordshire
OX11 8RN

01235 812229
didcot@wjstates.co.uk
www.wjstates.co.uk

William | Jones

Estate Agents