

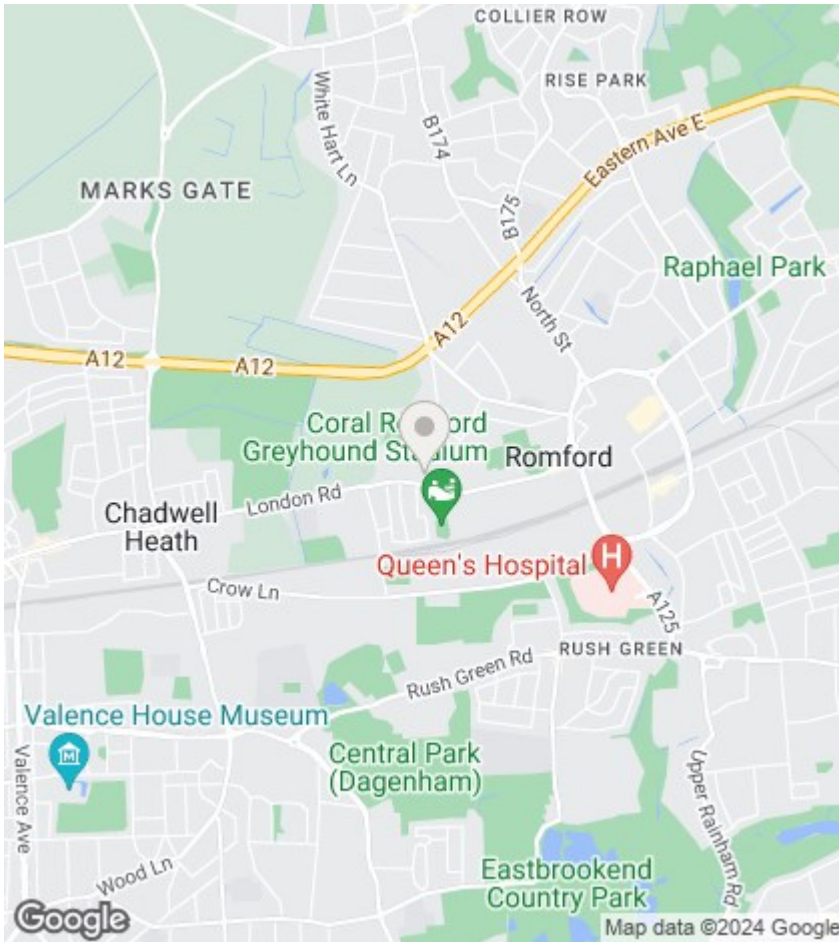
# LUXE



## Block B, Flat 24 1A Spring Gardens, Romford, Essex, RM7 9LR

**£1,700 Per Month**

- Brand New Development
- One Bedroom One Bathroom Apartment
- BOSCH Kitchen Appliances
- Balcony
- Completion & Move in January 2024
- Offered Unfurnished or Furniture Packages Available
- Parking
- Opportunity To Live In A Brand New And never Been Lived in Apartment



## Directions

## Viewings

Viewings by arrangement only. Call 0203 551 6141 to make an appointment.

## Council Tax Band:

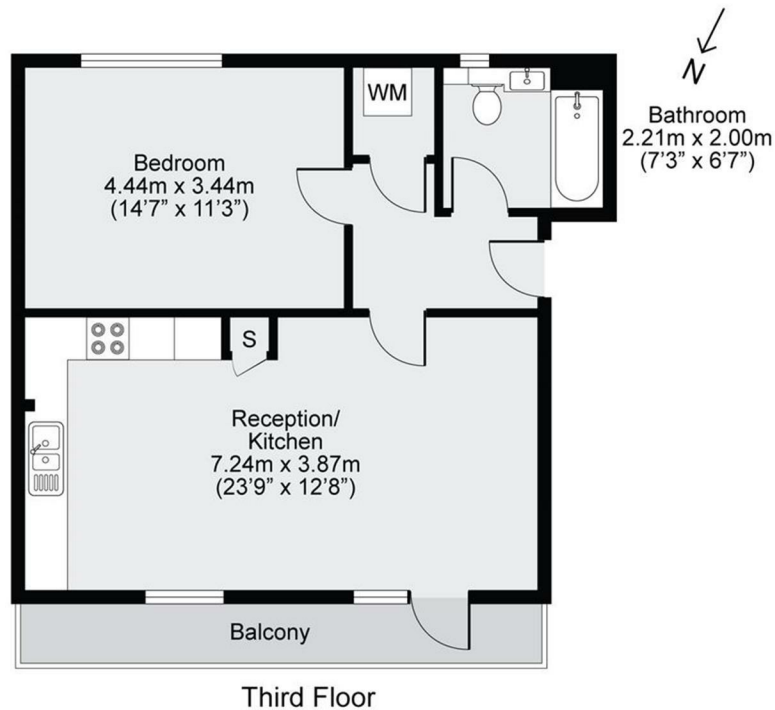
## EPC Rating:

Energy Efficiency Rating		Current	Potential
Very energy efficient - lower running costs			
(92 plus) A			
(81-91) B			
(69-80) C			
(55-68) D			
(39-54) E			
(21-38) F			
(1-20) G			
Not energy efficient - higher running costs			
England & Wales		EU Directive 2002/91/EC	



London Road, RM7

57.0sqm / 613.5sqft



GROSS INTERNAL AREA(GIA)  
The footprint of the property  
57.0sqm / 613.5sqft

TOTAL STORAGE SPACE  
Storage and wardrobe total area  
1.8sqm / 19.4sqft

EXTERNAL STRUCTURAL FEATURES  
Garden, Balcony, Terrace, Verandah etc.  
6.0sqm / 64.6sqft

RESTRICTED HEAD HEIGHT  
Limited use area under 1.5m  
0.0 sqm / 0.0sqft

Disclaimer: Floorplan measurements are approximate and are for illustrative purposes only. While we do not doubt the floorplan accuracy and completeness, you or your advisors should conduct a careful, independent investigation of the property in respect of monetary valuation.

Maison  
V.I.E