



17 Mount View Road, Herne Bay
£420,000

17 Mount View Road

Herne Bay, Herne Bay

CHAIN FREE EXTENDED CHALET BUNGALOW IN IMMACULATE CONDITION WITH AMPLE OFF STREET PARKING AND SUNNY ASPECT GARDEN...

Located in a sought-after neighbourhood, this versatile semi-detached Chalet Bungalow is a true gem. Immaculately maintained throughout, this property offers a perfect blend of comfort and style. Boasting two large dormer window rooms upstairs, with lovely views across Herne, this level has been used by the current owners as a bedroom and sitting room creating almost it's own suite on the first floor. Downstairs you enter into central hallway, with three bedrooms and a bathroom to the front, large light and airy lounge that leads back to the dining room, with modern fitted kitchen off of the lounge offering ample work surface and storage space. The single story extension across the back creates a larger kitchen and dining room.

Enjoy the sunny, almost directly south facing garden which provides natural light and warmth throughout the home. The low maintenance rear garden is perfect for those with a busy lifestyle with mature established borders and a few different seating areas for different times of the day. Don't miss this opportunity to call this beautiful property your new home.

With a driveway accommodating up to four cars and a garage for added convenience, parking will never be an issue.

Please contact Sole agents miles and Barr for more information or to organise your personal viewing appointment today.





Entrance

Leading to

Bedroom

8' 2" x 8' 0" (2.48m x 2.45m)

Bathroom

9' 1" x 5' 5" (2.78m x 1.64m)

Bedroom

14' 7" x 10' 6" (4.45m x 3.21m)

Bedroom

10' 2" x 8' 9" (3.11m x 2.66m)

Living Room

17' 8" x 13' 6" (5.38m x 4.11m)

Kitchen

15' 11" x 8' 9" (4.86m x 2.66m)

Dining Room

13' 6" x 12' 1" (4.11m x 3.68m)

First Floor

Leading to

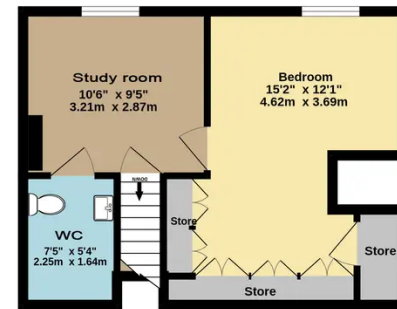
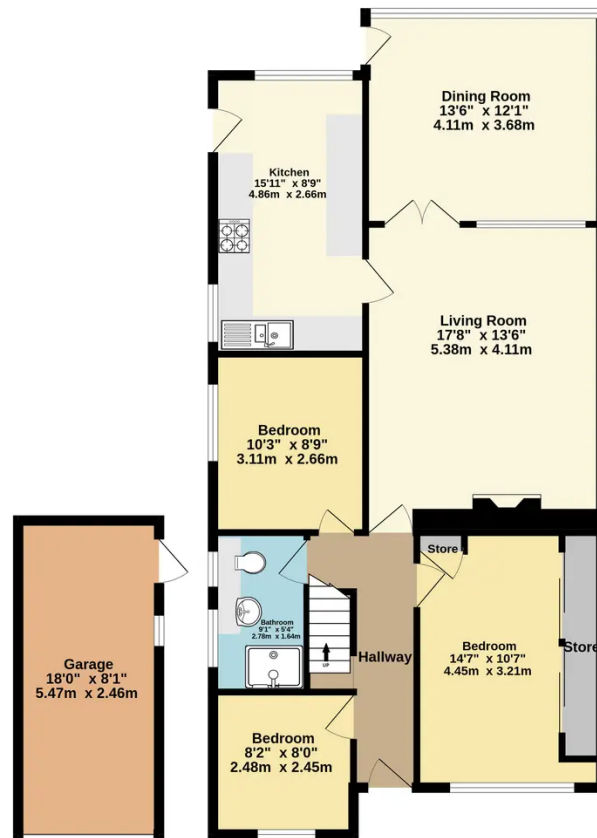
Bathroom

7' 5" x 5' 5" (2.25m x 1.64m)

Bedroom

15' 2" x 12' 1" (4.62m x 3.69m)





TOTAL FLOOR AREA : 1468 sq.ft. (136.4 sq.m.) approx.

Whilst every attempt has been made to ensure the accuracy of the floorplan contained here, measurements of doors, windows, rooms and any other items are approximate and no responsibility is taken for any error, omission or mis-statement. This plan is for illustrative purposes only and should be used as such by any prospective purchaser. The services, systems and appliances shown have not been tested and no guarantee as to their operability or efficiency can be given.
Made with Metropix ©2024

Miles & Barr

125 High Street, Herne Bay – CT6 5LA

01227 740 840

hernebay@milesandbarr.co.uk

www.milesandbarr.co.uk/

We have not carried out a structural survey, appliances & services are untested, dimensions are approximate, floor plans are not to scale. Legal advice should be taken to verify fixtures/fittings/planning/alterations and/or lease details before proceeding. On acceptance of an offer, purchasers must undertake ID checks; this is a legal requirement in accordance with Anti Money Laundering Regulations. We use a specialist third party company, the cost is £60 inc VAT per purchase, once offer is agreed and prior to issuing the sales memorandum. This Charge is non-refundable For Referral Fee Disclosure visit: milesandbarr.co.uk/referral-fee-disclosure