

## Aspen Place, Bushey WD23 1FW

**£1,750 PCM**

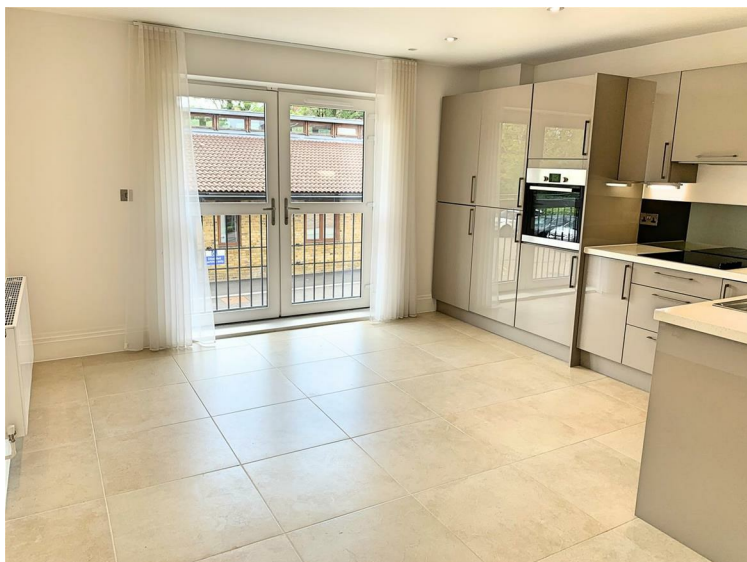
Benjamin Stevens are proud to present this two double bedroom located in Aspen Place in Bushey Heath. The property comprises of two double bedrooms, a bright and spacious reception room with an open plan kitchen and a family bathroom. There is plenty of light throughout the flat and it is located on the first floor and there is a lift in the building. The flat also comes with two designated car parking spaces and is available now.

Available unfurnished.

Please call 020 3271 0111 to book a viewing.

# Aspen Place, Bushey WD23 1FW

**Reception and Kitchen 16'09 x 13'11 (5.11m x 4.24m)**



A bright a spacious reception room with a fully fitted modern kitchen.

**Bedroom Two 15'06 x 8'09 (4.72m x 2.67m)**



A bright double bedroom with large wardrobes

**Master Bedroom 13'07 x 10'02 (4.14m x 3.10m)**



A bright double bedroom with large wardrobes

**Bathroom 9'01 x 6'09 (2.77m x 2.06m)**



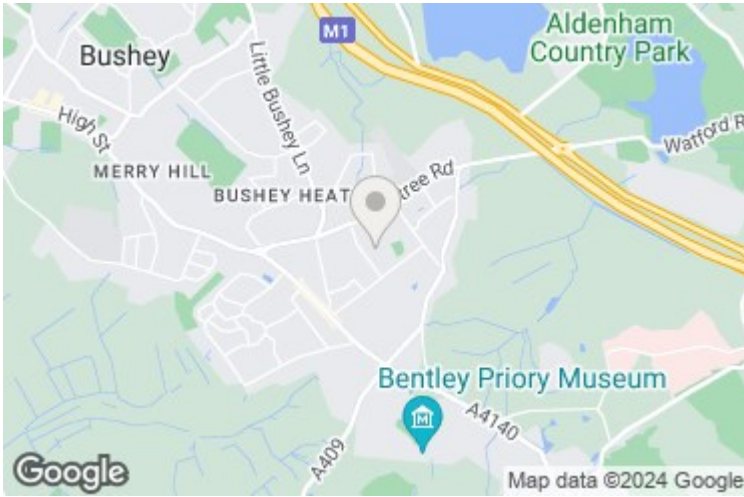
A bright and spacious bathroom with bathtub, WC and basin.

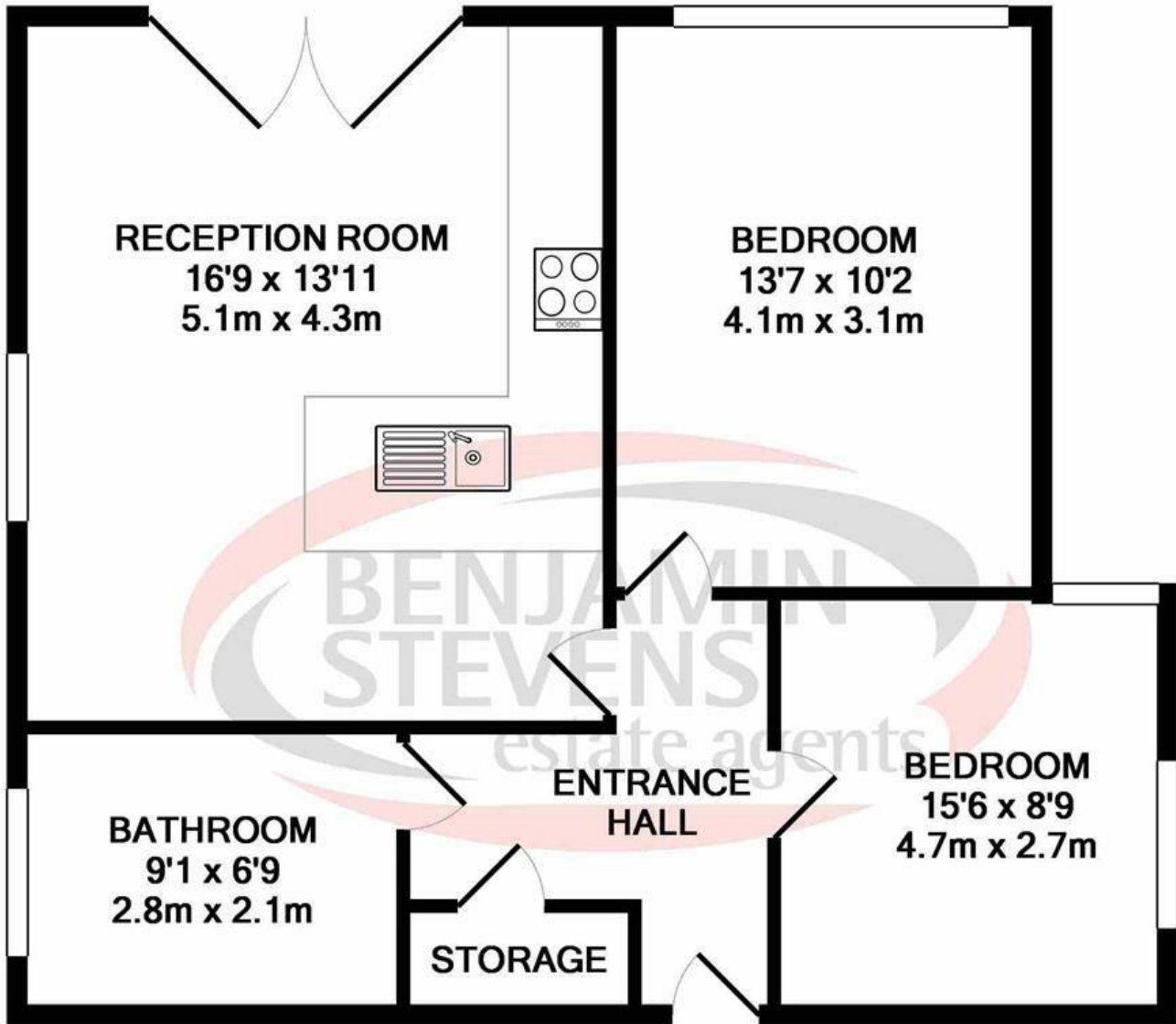
**Open Plan Kitchen**



# Aspen Place, Bushey WD23 1FW

## Exterior

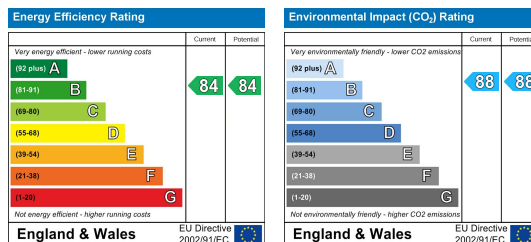




TOTAL APPROX. FLOOR AREA 596 SQ.FT. (55.3 SQ.M.)

Whilst every attempt has been made to ensure the accuracy of the floor plan contained here, measurements of doors, windows, rooms and any other items are approximate and no responsibility is taken for any error, omission, or mis-statement. This plan is for illustrative purposes only and should be used as such by any prospective purchaser. The services, systems and appliances shown have not been tested and no guarantee as to their operability or efficiency can be given

Made with Metropix ©2019



**Edgware Office- 194 Station Road, Edgware, HA8 7AT. Tel: 020 8958 1118**  
**Bushey Heath Office- 59 High Road, Bushey, WD23 1EE. Tel: 020 8950 7777**  
[www.benjaminstevens.co.uk](http://www.benjaminstevens.co.uk)