



**BENJAMIN
STEVENS.**
estate agents



49 Bushey Hall Road, Bushey WD23 2EE

£1,350 PCM

Benjamin Stevens are pleased to bring to the market this one bedroom flat located on Bushey Hall Road. The accommodation boasts one double bedroom, reception room, separate fitted kitchen, and three piece bathroom. Ideally located a short walk away from many amenities such as Watford High Street, local green spaces and supermarkets.

Transport links include local bus routes, Bushey Station and Watford Station.

This flat also benefits from having allocated parking at the rear as well as its own garage.

Call now on 020 3271 0111 for more details.

49 Bushey Hall Road, Bushey WD23 2EE

Exterior

Bedroom 12'4 x 12'2 (3.76m x 3.71m)

Double glazed window to the front aspect and laid to carpet.

Reception Room 13'1 x 11'2 (3.99m x 3.40m)

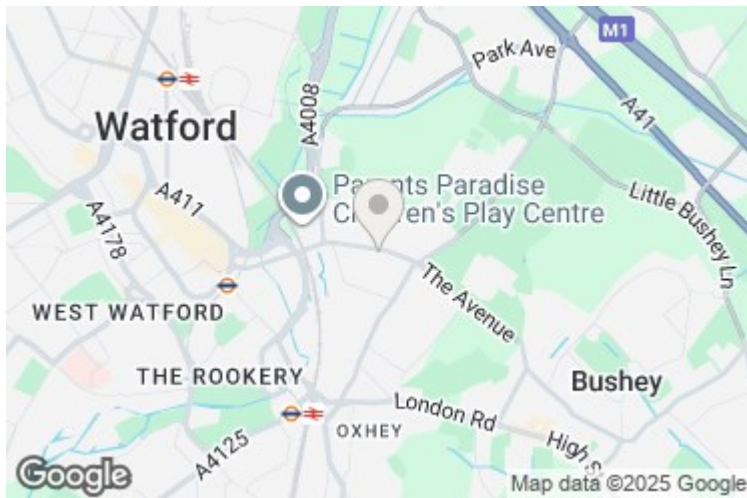
Double glazed window to the rear aspect and laid to carpet.

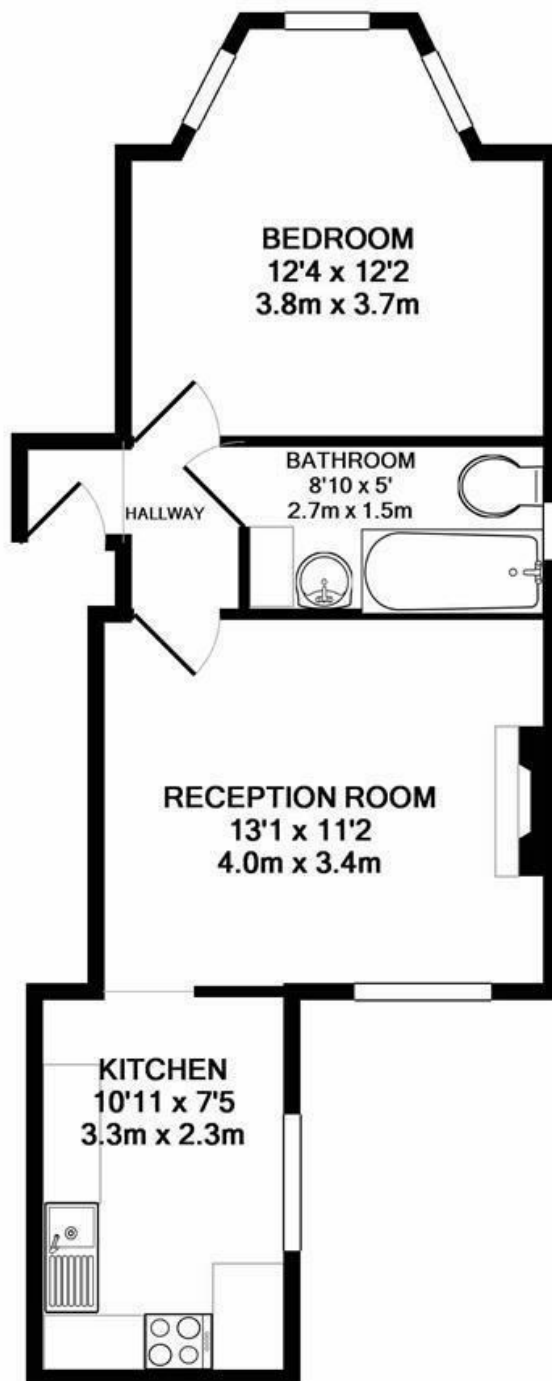
Kitchen 10'11 x 7'5 (3.33m x 2.26m)

Range of wall and base units, stainless steel sink with mixer tap and drainer board, gas cooker with extractor hood, washing machine, fridge freezer, double glazed window to the side aspect and wood effect flooring.

Bathroom 8'10 x 5 (2.69m x 1.52m)

Panelled bath with mixer taps and shower attachment, low level W/C, wall attached hand basin with vanity mirror, double glazed window to the side aspect and tiled throughout.





TOTAL APPROX. FLOOR AREA 424 SQ.FT. (39.4 SQ.M.)

Whilst every attempt has been made to ensure the accuracy of the floor plan contained here, measurements of doors, windows, rooms and any other items are approximate and no responsibility is taken for any error, omission, or mis-statement. This plan is for illustrative purposes only and should be used as such by any prospective purchaser. The services, systems and appliances shown have not been tested and no guarantee as to their operability or efficiency can be given
Made with Metropix ©2017

