



**BENJAMIN  
STEVENS.**  
estate agents



**Robin Hood Drive, Bushey WD23 2BY**

**£4,000 PCM**

Benjamin Stevens are pleased to advertise this stunning end of terrace five, bedroom, 5 bathroom house which offers the perfect blend of luxury, privacy, and comfort.

The property boasts of a modern open plan kitchen, five generously sized bedrooms with three en-suite, including a lavish master suite.

There is also a private rear garden, ideal for enjoying the outdoors and hosting summer barbecues.

This home offers easy access to amenities, schools, parks, and transportation options.

Don't miss the opportunity to make this exceptional property, so please call 020 3271 0111 to arrange a viewing.



# Robin Hood Drive, Bushey WD23 2BY

**Bedroom One**



**Reception**



**Bedroom Two**



**Kitchen/Dining/Family Room**



**Bedroom Three**

**Bedroom Four**



**Garden**



**Bedroom Five**

**En-suite**



**Bathroom**



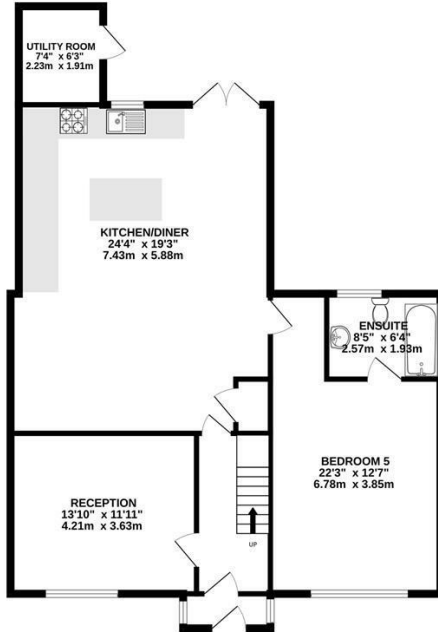
**Shower Room**



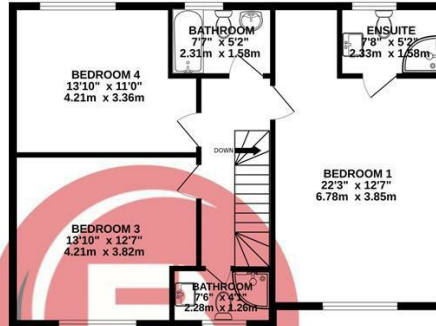
**Extreior**



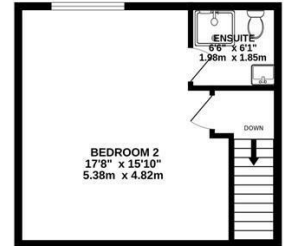
GROUND FLOOR  
1034 sq.ft. (96.1 sq.m.) approx.



1ST FLOOR  
736 sq.ft. (68.3 sq.m.) approx.



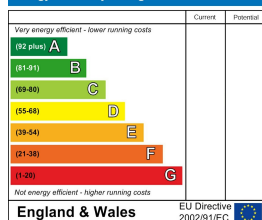
2ND FLOOR  
341 sq.ft. (31.6 sq.m.) approx.



TOTAL FLOOR AREA : 2110 sq.ft. (196.1 sq.m.) approx.

Whilst every attempt has been made to ensure the accuracy of the floorplan contained here, measurements of doors, windows, rooms and any other items are approximate and no responsibility is taken for any error, omission or mis-statement. This plan is for illustrative purposes only and should be used as such by any prospective purchaser. The services, systems and appliances shown have not been tested and no guarantee as to their operability or efficiency can be given.  
Made with Metropix ©2025

#### Energy Efficiency Rating



#### Environmental Impact (CO<sub>2</sub>) Rating

