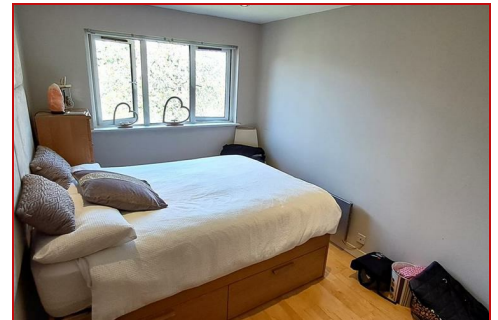




**BENJAMIN  
STEVENS.**  
estate agents



**Richfield Road, Bushey WD23 4RP**

**£1,600 PCM**

Benjamin Stevens are pleased to offer this Two Bedroom, First Floor Flat, located on Richfield Road and within easy walking distance to the Shops and Transport Links on the Heath.

The accommodation offers a Living Room/Dining area, Kitchen, Bathroom and Two Bedrooms.

The property also comes with an allocated parking space.

To arrange a viewing, please contact us on 020 3271 0111.

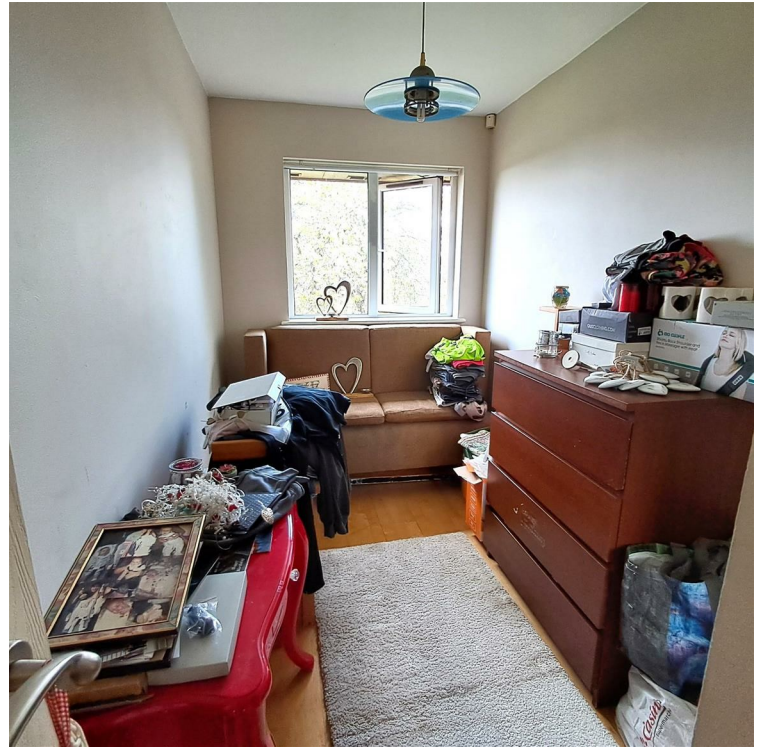


# Richfield Road, Bushey WD23 4RP

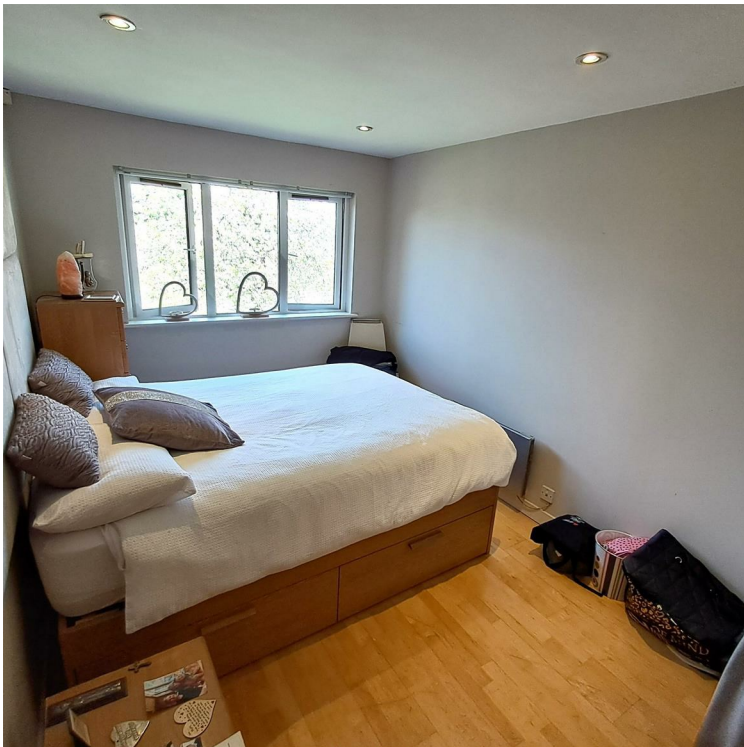
Exterior



Bedroom Two



Bedroom One



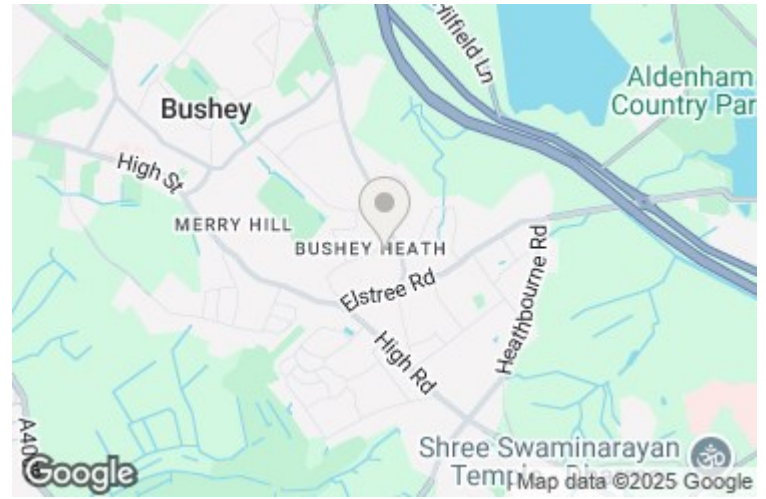
Lounge/Dining Room





## Richfield Road, Bushey WD23 4RP

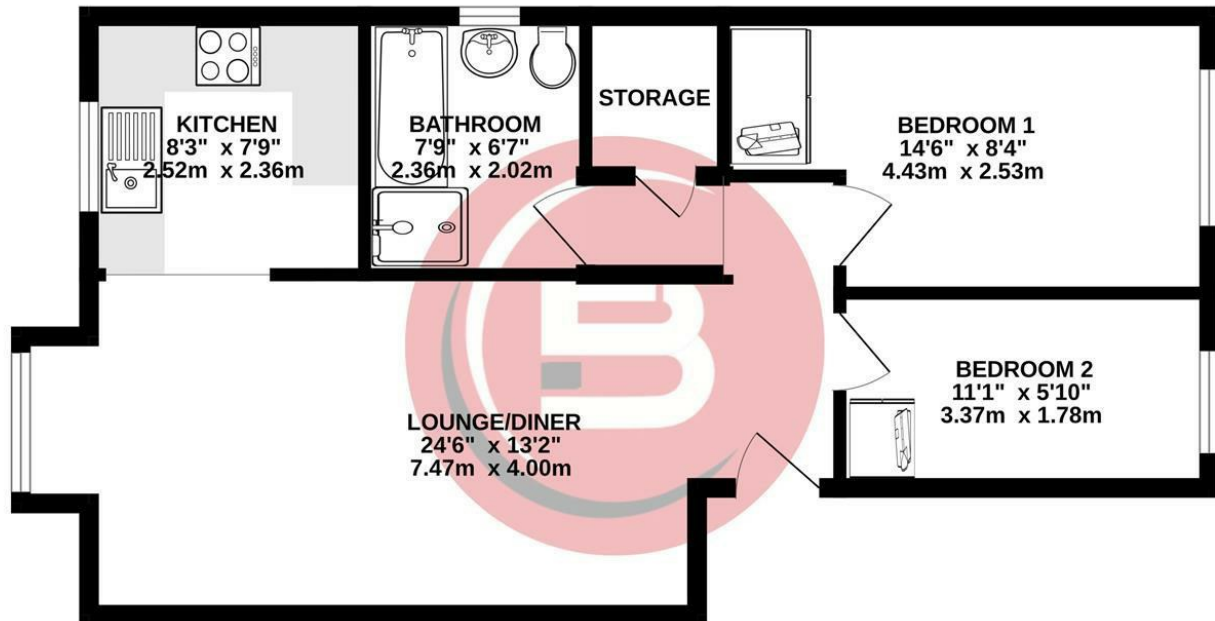
### Kitchen



### Bathroom



**GROUND FLOOR**  
541 sq.ft. (50.3 sq.m.) approx.



TOTAL FLOOR AREA : 541 sq.ft. (50.3 sq.m.) approx.

Whilst every attempt has been made to ensure the accuracy of the floorplan contained here, measurements of doors, windows, rooms and any other items are approximate and no responsibility is taken for any error, omission or mis-statement. This plan is for illustrative purposes only and should be used as such by any prospective purchaser. The services, systems and appliances shown have not been tested and no guarantee as to their operability or efficiency can be given.  
Made with Metropix ©2025

