



**BENJAMIN  
STEVENS.**  
estate agents



## **School Lane, Bushey WD23 1SS**

### **Offers In Excess Of £1,200,000**

A beautifully presented FOUR BEDROOM, THREE BATHROOM DETACHED FAMILY HOME situated in the heart of Bushey, conveniently located for all local shopping/transport facilities and within a great catchment area for all local schools. The property is being offered in excellent decorative order and benefits from: Double Glazed Windows, Gas Fired Heating To Radiators, Guest Shower Room, Study/Playroom, Sitting Room, Family Room, Fully Fitted Open Plan Kitchen Diner, Utility Room, Bedroom One With En Suite Dressing Room & Shower Room, Three Further Bedrooms, Family Bathroom, Rear Garden, Off Street Parking. NO UPPER CHAIN



# School Lane, Bushey WD23 1SS

**Exterior:**



**Sitting Room:**



**Entrance Hall:**



**Study/Playroom:**



**Guest Shower Room:**



**Family Room:**





# School Lane, Bushey WD23 1SS

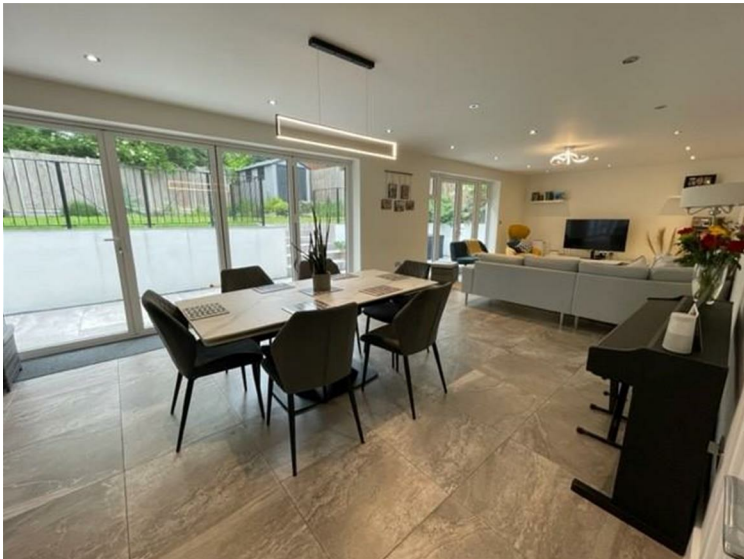
**Kitchen Diner/Family Room:**



**Utility Room:**



**Kitchen Diner/Family Room:**



**Stairs & First Floor Landing:**



**Kitchen Diner/Family Room:**



**Bedroom One:**





# School Lane, Bushey WD23 1SS

**En Suite Dressing Room:**



**Bedroom Three:**



**En Suite Shower Room:**



**Bedroom Four:**



**Bedroom Two:**



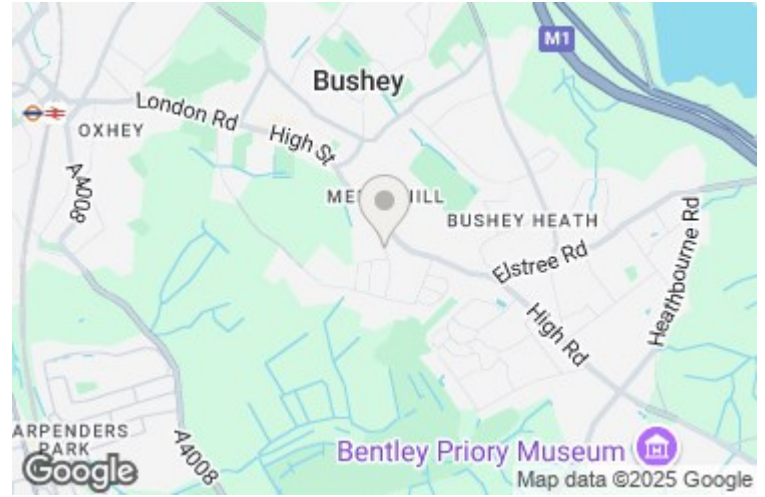
**Family Bathroom:**





# School Lane, Bushey WD23 1SS

## Garden:



## Garden:



## Tenure:

This is a freehold property.

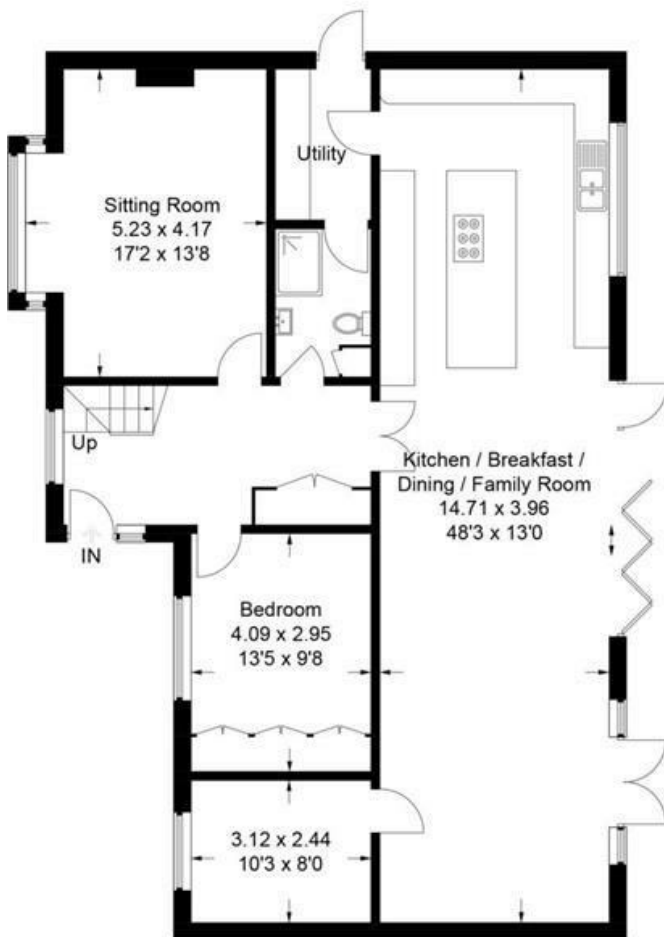
Council Tax Band F £2,999 per annum.

As always buyers are advised to gain verification from their surveyor/ solicitor during the conveyancing process.

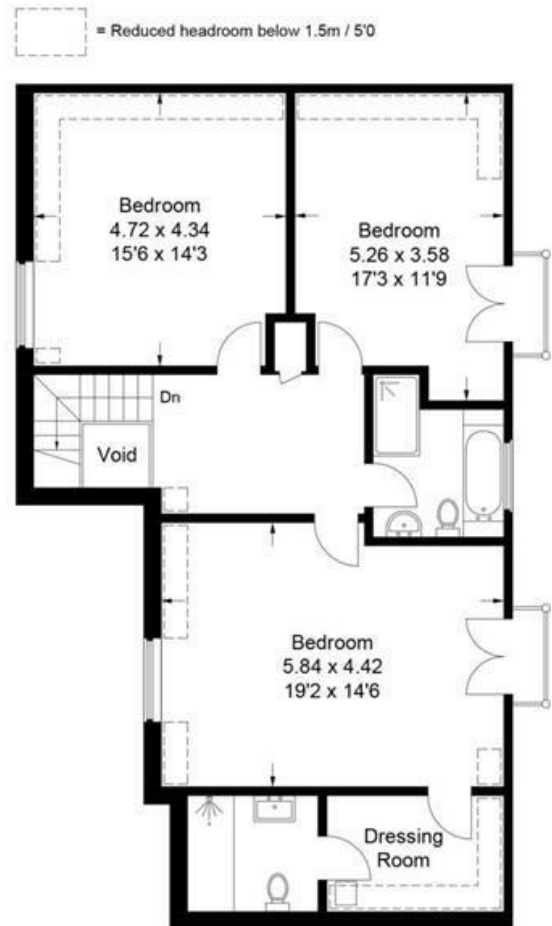
## Disclaimer:

While every care and effort has been made to ensure these details are correct their accuracy cannot be guaranteed and so should not form part of any contract.

Approximate Gross Internal Area  
 Ground Floor = 125.8 sq m / 1,354 sq ft  
 First Floor = 95.7 sq m / 1,030 sq ft  
 (Excluding Void)  
 Total = 221.5 sq m / 2,384 sq ft



Ground Floor



First Floor

