



**BENJAMIN  
STEVENS.**  
estate agents



## **Hartsbourne Road, Bushey WD23 1JE**

**£2,950 PCM**

Benjamin Stevens are delighted to offer this Four Bedroom Detached Property, located on one of Bushey Heath's most Sought After Roads.

The property offers Spacious Downstairs Accommodation which comprises Large Entrance Hallway, Guest Cloakroom, a large Lounge/Dining Room, Reception Room, Kitchen and Utility Room.

On the First Floor are Four Good-Sized Bedrooms, a Bathroom and a Further W/C.

Externally the Property offers a Front & Rear Garden, Two Garages and Off Street Parking

To arrange a viewing, please contact us on 020 3271 0111



# Hartsbourne Road, Bushey WD23 1JE

Exterior



Master Bedroom



Lounge/Dining Room



Bedroom Two





# Hartsbourne Road, Bushey WD23 1JE

**Bedroom Three**



**Bathroom**



**Bedroom Four**



**W C**





# Hartsbourne Road, Bushey WD23 1JE

**Landing**



**Guest Cloakroom**



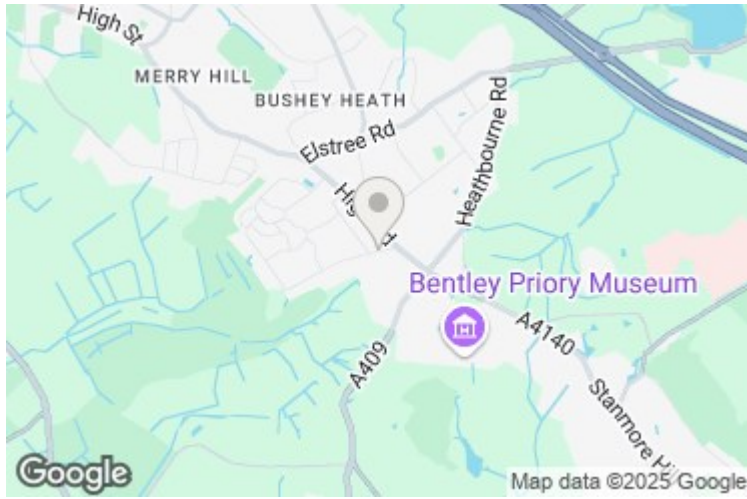
**Kitchen**



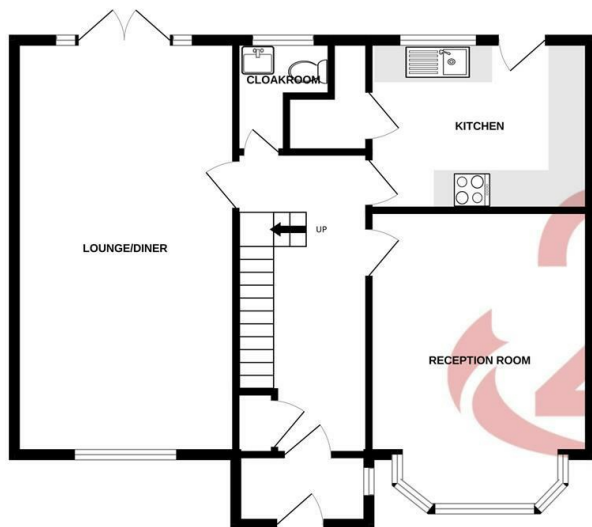
**Rear Garden**



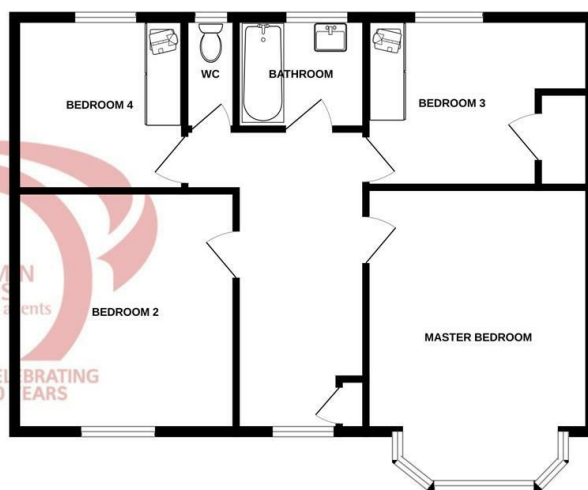
## Hartsbourne Road, Bushey WD23 1JE



GROUND FLOOR  
745 sq.ft. (69.2 sq.m.) approx.



1ST FLOOR  
718 sq.ft. (66.7 sq.m.) approx.



TOTAL FLOOR AREA : 1463 sq.ft. (135.9 sq.m.) approx.

Whilst every attempt has been made to ensure the accuracy of the floorplan contained here, measurements of doors, windows, rooms and any other items are approximate and no responsibility is taken for any error, omission or mis-statement. This plan is for illustrative purposes only and should be used as such by any prospective purchaser. The services, systems and appliances shown have not been tested and no guarantee as to their operability or efficiency can be given.  
Made with Metropix ©2025

