



**BENJAMIN  
STEVENS.**  
estate agents



**Elstree Road, Bushey WD23 4GH**

**Offers In Excess Of £899,950**

An opportunity to acquire this THREE BEDROOM, THREE BATHROOM, TWO RECEPTION ROOM DETACHED CHALET BUNGALOW situated on a bold plot in the heart of Bushey Heath, conveniently located and within walking distance to all local shopping and transport facilities. The property is in need of modernisation and benefits from: Replacement Double Glazed Windows, Gas Fired Heating To Radiators, Living Room, Dining Room, Kitchen/Breakfast Room, Bedroom One With En Suite Bathroom, Bedroom Two With En Suite Bathroom, Bedroom Three, Family Bathroom, Basement, Secluded Rear Garden, Single Garage, Off Street Parking For Several Cars.  
THE PROPERTY HAS POTENTIAL TO EXTEND STPP  
CHAIN FREE

# Elstree Road, Bushey WD23 4GH

Exterior:



Living Room:



Entrance Hall:



Living Room:



Living Room:



Living Room:

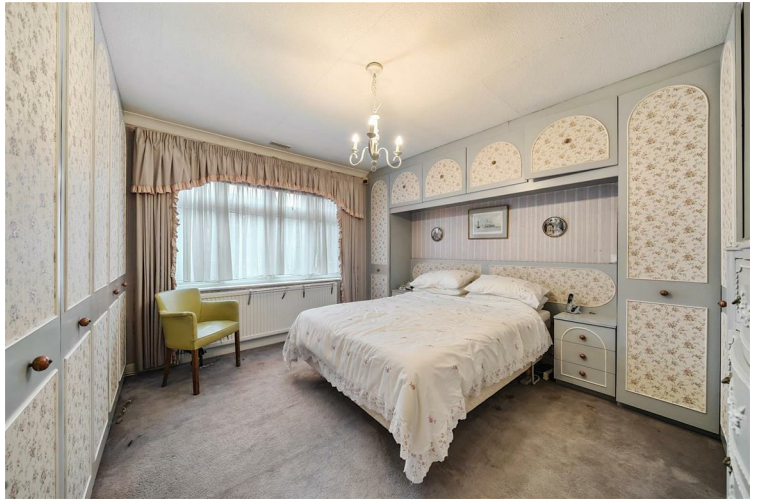


# Elstree Road, Bushey WD23 4GH

**Dining Room:**



**Bedroom One:**



**Dining Room:**



**En Suite Shower Room:**



**Kitchen/Breakfast Room:**



**Bedroom Two:**



# Elstree Road, Bushey WD23 4GH

**En Suite Bathroom:**



**Garden:**



**Bedroom Three:**



**Exterior Rear:**



**Family Bathroom:**

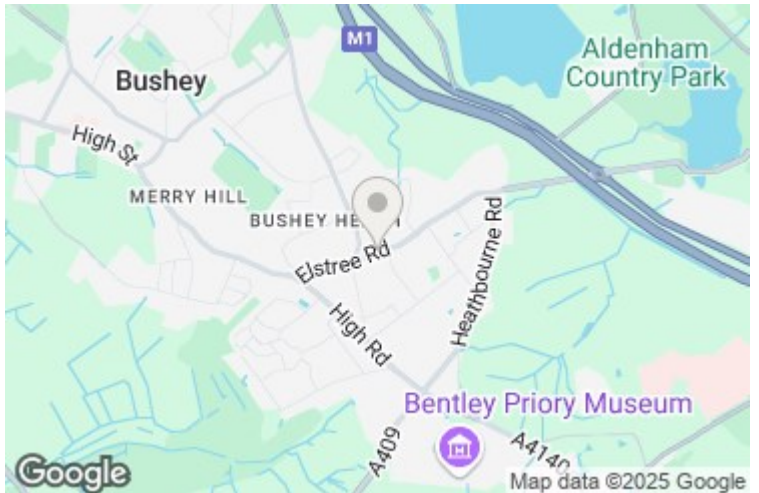


**Tenure:**

This is a freehold property.  
Council Tax Band F £3,148 per annum.  
As always buyers are advised to gain verification from their surveyor/solicitor during the conveyancing process.

**Disclaimer:**

While every care and effort has been made to ensure these details are correct their accuracy cannot be guaranteed and so should not form part of any contract.



# Elstree Road, Bushey Heath, Bushey, WD23

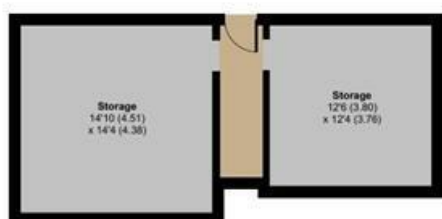
Approximate Area = 1898 sq ft / 176.3 sq m

Limited Use Area(s) = 131 sq ft / 12.1 sq m

Garage = 127 sq ft / 11.7 sq m

Total = 2156 sq ft / 200.1 sq m

For identification only - Not to scale



**BASEMENT**



**GROUND FLOOR**

Denotes restricted head height

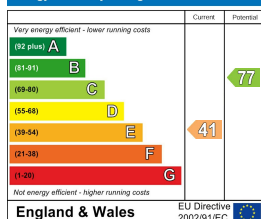


**FIRST FLOOR**



Floor plan produced in accordance with RICS Property Measurement 2nd Edition, Incorporating International Property Measurement Standards (IPMS2 Residential). © richcom 2024. Produced for Benjamin Stevens. REF: 1225604

## Energy Efficiency Rating



## Environmental Impact (CO<sub>2</sub>) Rating

