



Oak Path, Bushey WD23 4UJ

Asking Price £339,950

A ONE DOUBLE BEDROOM END OF TERRACED HOUSE situated in a sought after residential Close off Ashfield Avenue, conveniently located to all local shopping/transport facilities and within walking distance to King George Park. The property is being offered in good decorative order and benefits from: Double Glazed Windows, Gas Fired Heating To Radiators, Reception Room, Kitchen, Double Bedroom, Bathroom, Rear Garden, Allocated Parking.

Oak Path, Bushey WD23 4UJ

Exterior:



Kitchen:



Reception Room:



Bedroom:



Reception Room:



Bedroom:



Oak Path, Bushey WD23 4UJ

Bathroom:



While every care and effort has been made to ensure these details are correct their accuracy cannot be guaranteed and so should not form part of any contract.



Garden:



Garden:



Tenure:

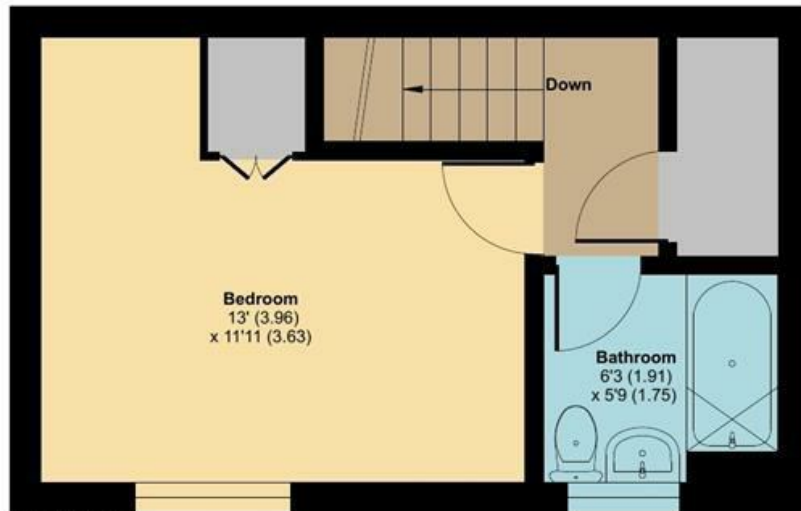
This is a freehold property.
Council Tax Band C which is £1,937 per annum.
As always buyers are advised to gain verification from their surveyor/solicitor during the conveyancing process.

Disclaimer:

Oak Path, Bushey, WD23

Approximate Area = 472 sq ft / 43.8 sq m

For identification only - Not to scale



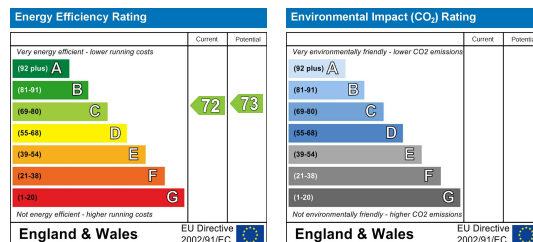
FIRST FLOOR



GROUND FLOOR



Floor plan produced in accordance with RICS Property Measurement Standards incorporating International Property Measurement Standards (IPMS2 Residential). © nichecom 2024. Produced for Benjamin Stevens. REF: 1160986



Edware Office- 194 Station Road, Edware, HA8 7AT. Tel: 020 8958 1118
 Bushey Heath Office- 59 High Road, Bushey, WD23 1EE. Tel: 020 8950 7777
www.benjaminstevens.co.uk