

Common Road, Stanmore HA7 3HX

Offers In Excess Of £650,000

A beautifully presented extended and refurbished THREE BEDROOM, THREE BATHROOM, TWO RECEPTION ROOM SEMI DETACHED FAMILY HOME situated on a sought after residential road conveniently located and within walking distance to both Bushey Heath & Bentley Priory. The property is being offered in excellent decorative order and benefits from: Replacement Double Glazed Windows, Gas Fired Heating To Radiators, Guest Cloakroom/Shower Room, Living Room, Morning Room, Fully Fitted Open Plan Kitchen Diner With Hot Tap & BI-Fold Doors Leading To Garden, Bedroom One With En Suite Shower Room, Bedroom Two With En Suite Bathroom & Dressing Area, Bedroom Three, Beautiful Rear Garden, Off Street Parking For Two Cars.

Common Road, Stanmore HA7 3HX

Exterior:



Living Room:



Morning Room:



Guest Cloakroom/Shower Room:



Morning Room:



Living Room:



Common Road, Stanmore HA7 3HX

Open Plan Kitchen/Diner:



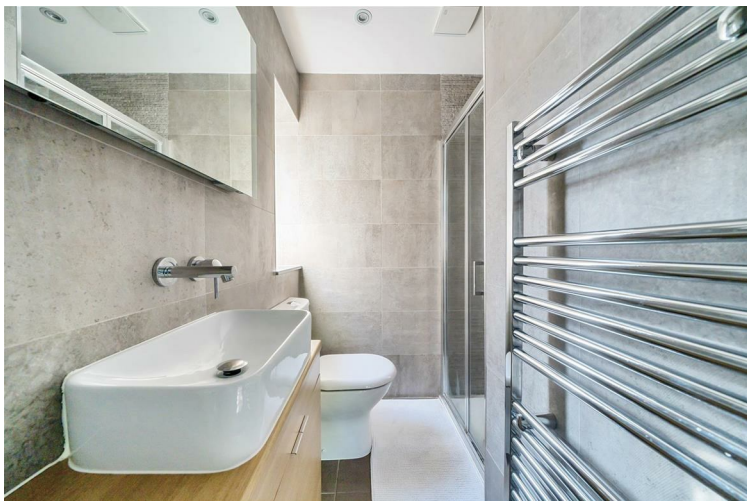
Bedroom One:



Open Plan Kitchen/Diner:



En Suite Shower Room:



Open Plan Kitchen/Diner:



Bedroom Two:



Common Road, Stanmore HA7 3HX

Bedroom Two:



Garden:



En Suite Bathroom:



Exterior Rear:



Bedroom Three:

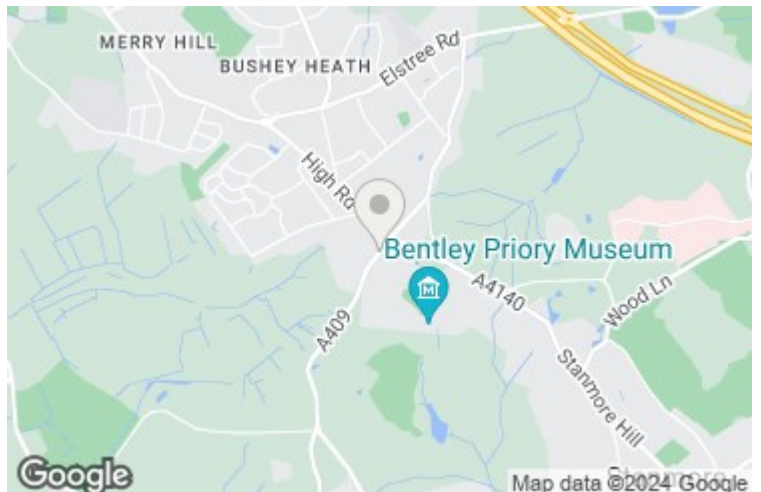


Tenure:

This is a freehold property.
Council Tax Band E £2,663 per annum.
As always buyers are advised to gain verification from their surveyor/solicitor during the conveyancing process.

Disclaimer:

While every care and effort has been made to ensure these details are correct their accuracy cannot be guaranteed and so should not form part of any contract.



Common Road, Stanmore, HA7

Approximate Area = 1091 sq ft / 101.4 sq m

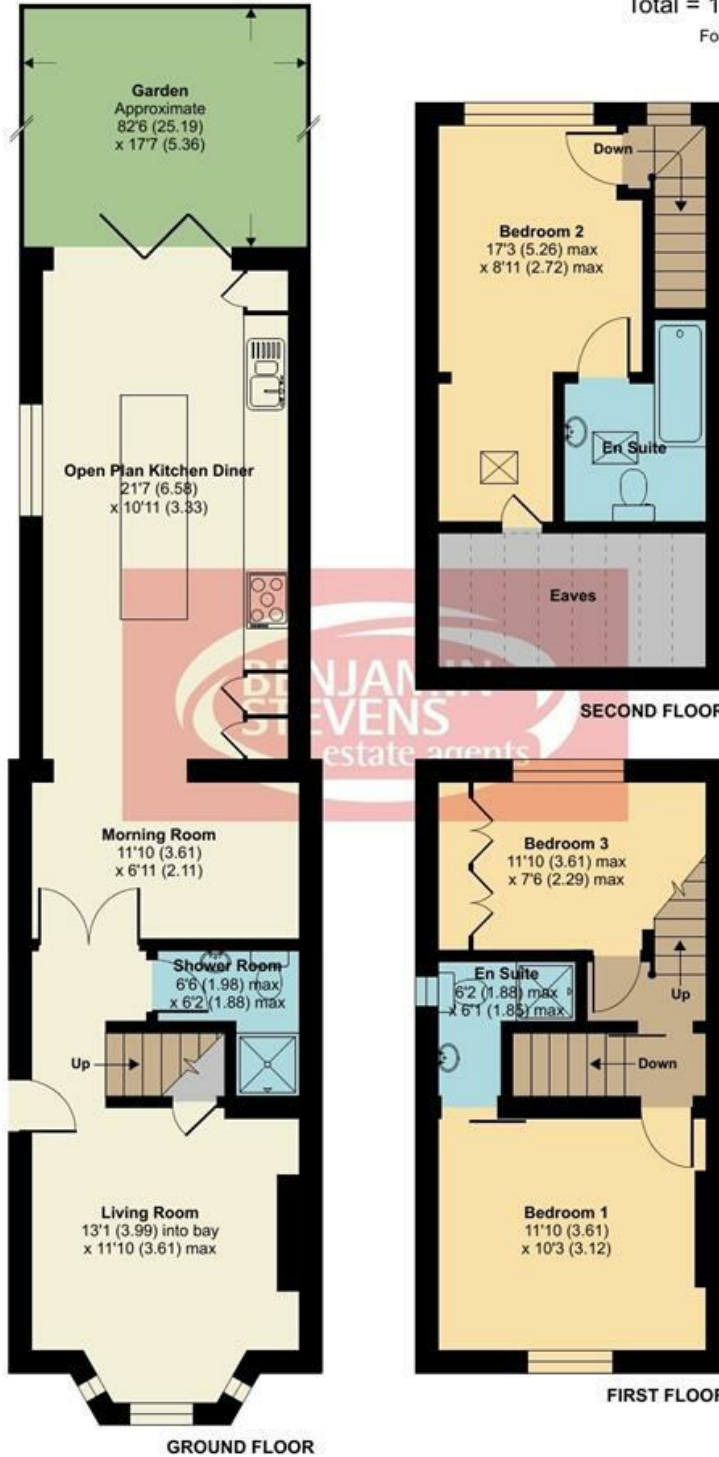
Limited Use Area(s) = 72 sq ft / 6.7 sq m

Total = 1163 sq ft / 108.1 sq m

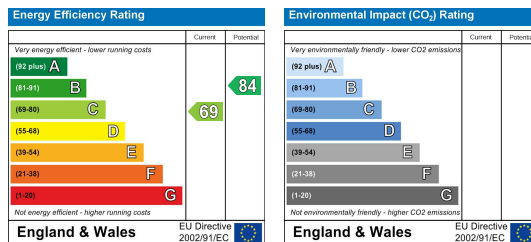
For identification only - Not to scale



Denotes restricted head height



Floor plan produced in accordance with RICS Property Measurement Standards incorporating International Property Measurement Standards (IPMS2 Residential). © nichecom 2024. Produced for Benjamin Stevens. REF: 1130310



Edgware Office- 194 Station Road, Edgware, HA8 7AT. Tel: 020 8958 1118
 Bushey Heath Office- 59 High Road, Bushey, WD23 1EE. Tel: 020 8950 7777
www.benjaminstevens.co.uk