

160 Camden Street / 13 Prowse Place and yard, NW1

Offers in excess of £1.3m

Rare potential development opportunity on two freehold titles in central Camden. 160 Camden Street and 13 Prowse Place (including the Yard), offering multiple angles on maximising the potential of the two sites. Both are offered with full vacant possession.



HUDSONS



Hudsons in their own right as agents for the vendor/lessor of this property give notice that: these particulars are a general outline only for prospective purchasers/tenants and do not constitute part of an offer or contract; all descriptions, dimensions and references are given in good faith but neither Hudsons nor the vendor/lessor accept responsibility for any error they may contain; purchasers/tenants must satisfy themselves as to their correctness by inspection or otherwise; Hudsons can give no further representation or warranty in relation to this property; unless otherwise stated, all prices/rents are quoted exclusive of VAT.

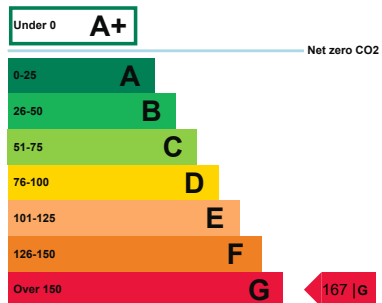


Description

2 story building now comes under Class E office premises.

763 sq ft / 70.9 sq m

EPC rating



13 Prowse Place, NW1

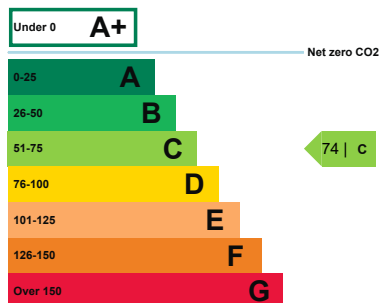


Description

2 story building now comes under Class E shop and premises.

602 sq ft / 56 sq m

EPC rating





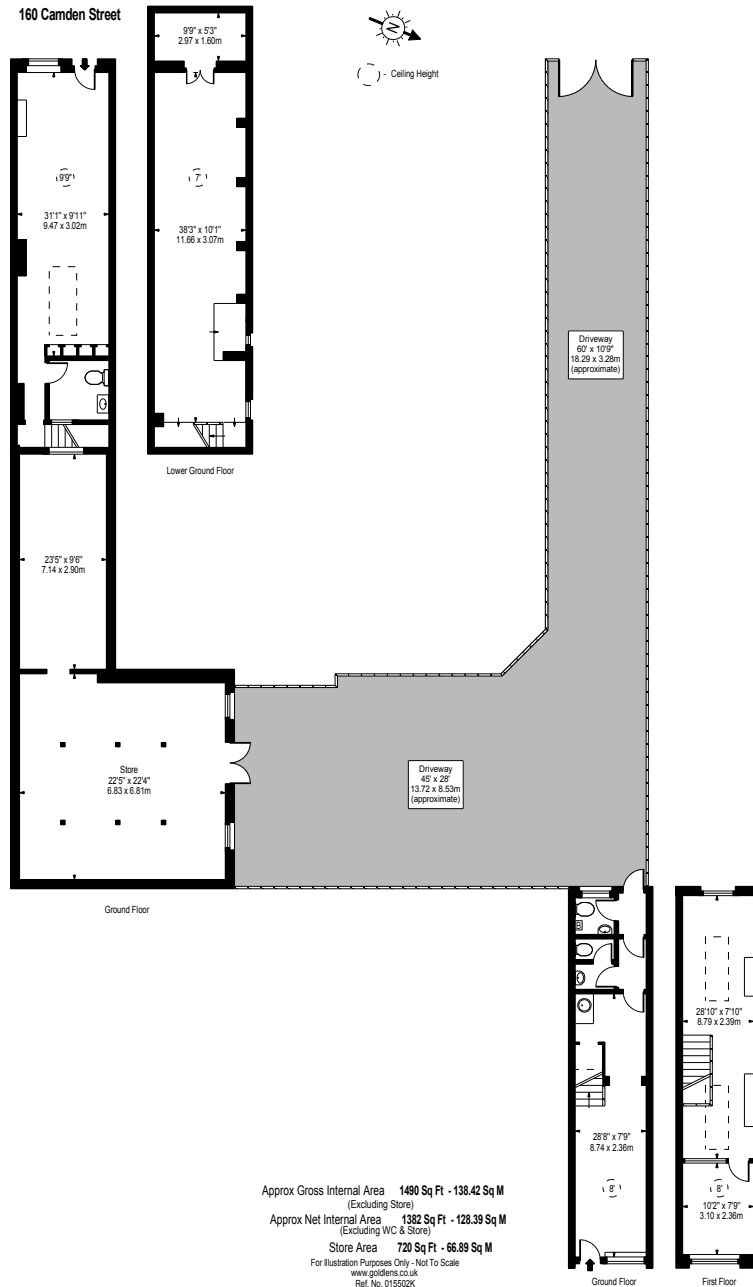
Description

Single story building with no windows and used as storage.

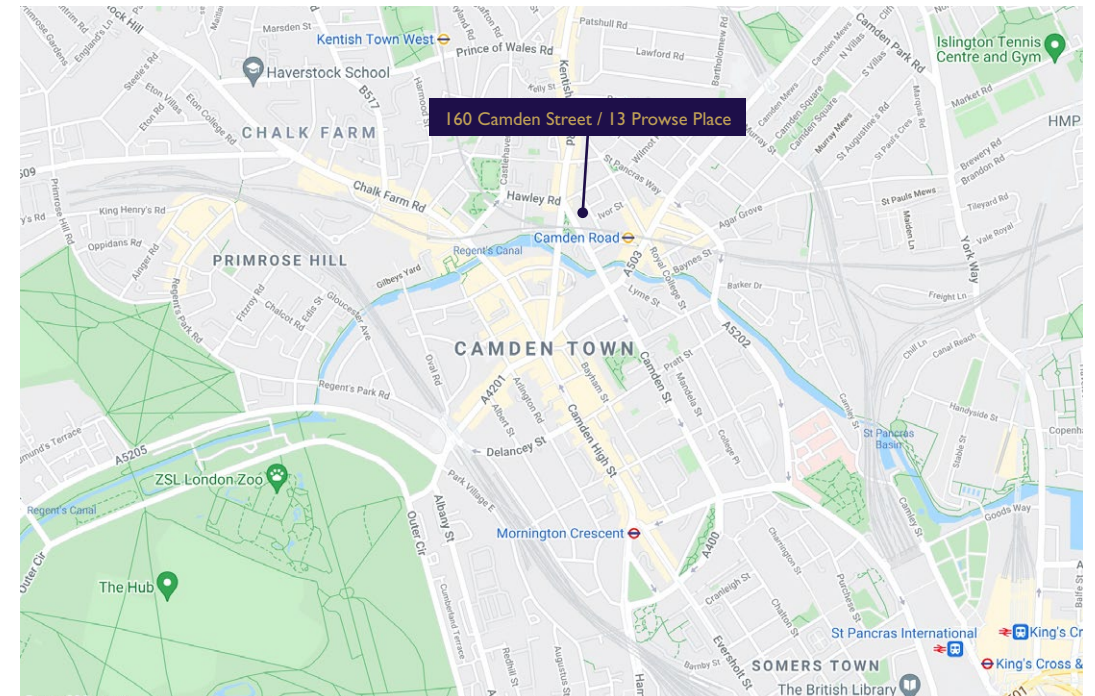
720 sq ft / 66.89 sq m



160 Camden Street / 13 Prowse Place and yard, NW1



Location



Viewing by appointment

Jon Hudson

T. 020 7631 8702

M. 07973 622660

jonathan@hudsonsproperty.com



HUDSONS