



27 Woodland Road, Manchester, Lancashire M18 7JY
£1,000 Per Calendar Month

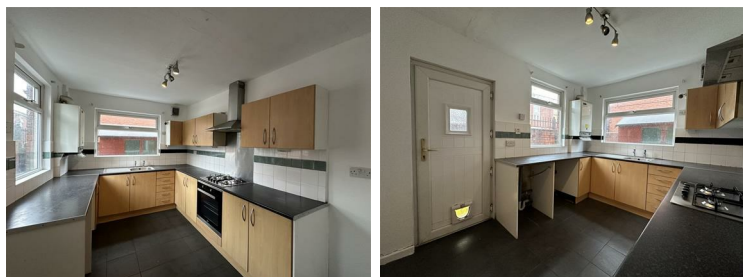
Sanderson James is delighted to introduce this immaculate end-terrace property available for rent. Nestled in a prime location in Gorton, it boasts proximity to several schools and transports links including the Ryder Brow tram station. Inside this property, you'll find a spacious through lounge seamlessly connecting the living and dining areas. The well-appointed kitchen, situated at the rear, features ample storage with both wall and floor units. Upstairs, three well-proportioned bedrooms and a generously sized bathroom await. If this family home captures your interest, don't hesitate to contact Sanderson James to arrange a viewing.



Lounge

Dinning Room

Kitchen



Bedroom One

Bedroom Two

Bedroom Three

Bathroom

Letting contact

Please contact Sanderson James to arrange a viewing on 0161 231 9696 or email renting@sandersonjames.co.uk to appreciate the quality this property has to offer. References & deposit required.

Office Opening Hours

OPENING HOURS; We are open six days a week. Monday - Thursday 9.30am - 6.00pm, Friday 9.30am - 5.00pm, Saturday 9.30am - 3.00pm.



| Energy Efficiency Rating | |
|--------------------------|-----------|
| Current | Potential |
| | 81 |
| 61 | |

Very energy efficient - lower running costs

Not energy efficient - higher running costs

England & Wales EU Directive 2002/91/EC

| Environmental Impact (CO ₂) Rating | |
|--|-----------|
| Current | Potential |
| | |

Very environmentally friendly - lower CO₂ emissions

Not environmentally friendly - higher CO₂ emissions

England & Wales EU Directive 2002/91/EC

