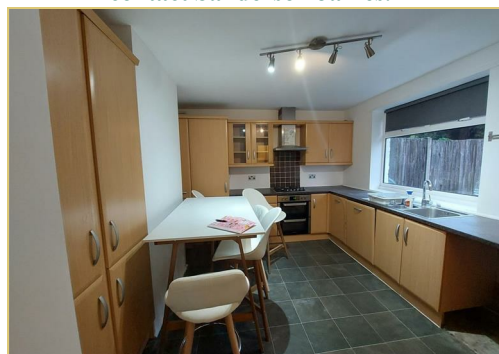


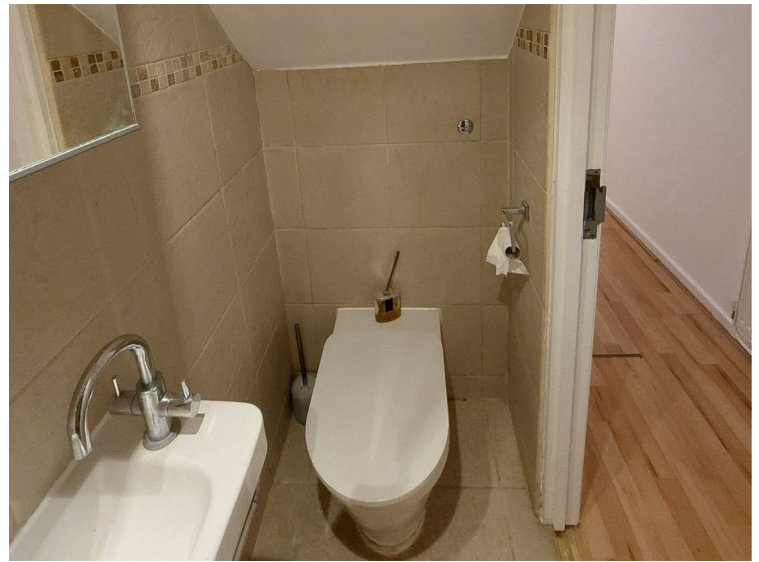


34 Bygrove Street, London, E14 6DN
£2,350 Per Calendar Month

Sanderson James is excited to introduce this inviting three-bedroom townhouse for rent. Situated directly across from Bygrove Primary School, this residence enjoys close proximity to several other high-rated schools. Additionally, the memorial park, Poplar Recreational Ground is just a short walk away, providing access to play-grounds, tennis, netball and basketball courts, as well as a bowling green. Step into this family-oriented home, featuring a spacious lounge and a well-appointed kitchen complete with ample storage cabinets and a dining area. The tranquil private back garden, complemented by a storage shed, creates an ideal set-ting for relaxation. An additional toilet conveniently located on the ground floor. Upstairs, there are three well-proportioned bedrooms and a pristine family bath-room. This comfortable and well-situated family home could be yours! To delve deeper in-to its offerings and to schedule a viewing, please contact Sanderson James.



Lounge



Bedroom One

Kitchen



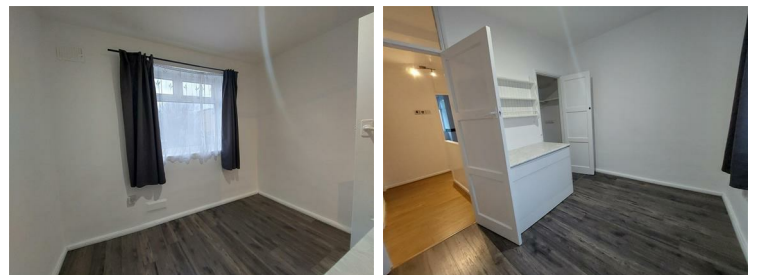
Bedroom Two

Back Garden



Bedroom Three

Downstair Toilet



Bathroom



Letting contact

Please contact Sanderson James to arrange a viewing on 0161 231 9696 or email renting@sandersonjames.co.uk to appreciate the quality this property has to offer. References & deposit required.

Office Opening Hours

OPENING HOURS; We are open six days a week. Monday - Thursday 9.30am - 6.00pm, Friday 9.30am - 5.00pm, Saturday 9.30am - 3.00pm.

