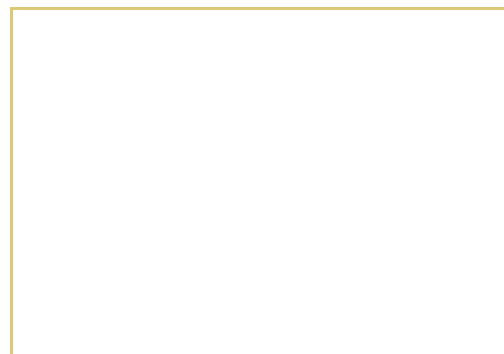
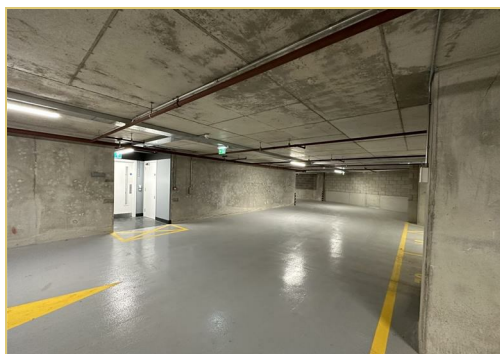
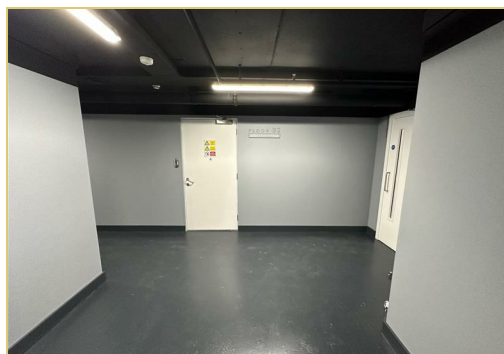




## 000 Parking Space, Blade Tower, 15 Silvercroft Street, Manchester, M15 4XL

£2000 Per Month

A secure underground parking space at Blade Tower is available for rent. This can serve as an additional parking space for Blade Tower residents. If you are interested, please contact Sanderson James.




### **Letting contact**

Please contact Sanderson James to arrange a viewing on 0161 231 9696 or email [renting@sandersonjames.co.uk](mailto:renting@sandersonjames.co.uk) to appreciate the quality this property has to offer. References & deposit required.

### **Office Opening Hours**

**OPENING HOURS;** We are open six days a week. Monday - Thursday 9.30am - 6.00pm, Friday 9.30am - 5.00pm, Saturday 9.30am - 3.00pm.

Energy Efficiency Rating		Current	Potential
Very energy efficient - lower running costs			
(92 plus) <b>A</b>			
(81-91) <b>B</b>			
(69-80) <b>C</b>			
(55-68) <b>D</b>			
(39-54) <b>E</b>			
(21-38) <b>F</b>			
(1-20) <b>G</b>			
Not energy efficient - higher running costs			
<b>England &amp; Wales</b>	EU Directive 2002/91/EC		

Environmental Impact (CO <sub>2</sub> ) Rating		Current	Potential
Very environmentally friendly - lower CO <sub>2</sub> emissions			
(92 plus) <b>A</b>			
(81-91) <b>B</b>			
(69-80) <b>C</b>			
(55-68) <b>D</b>			
(39-54) <b>E</b>			
(21-38) <b>F</b>			
(1-20) <b>G</b>			
Not environmentally friendly - higher CO <sub>2</sub> emissions			
<b>England &amp; Wales</b>	EU Directive 2002/91/EC	