



Hurfords

Prebendal Close, Nassington Peterborough Freehold: £585,000

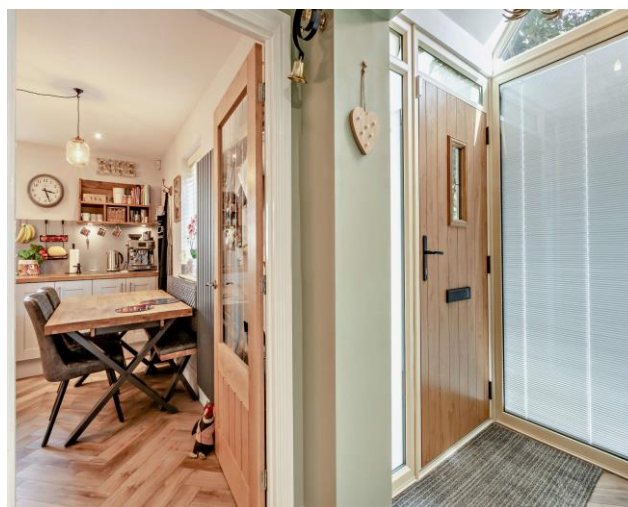
Key Features



- Large Detached Cotswold Stone Home
- Atrium/Porch entry with Exposed Brick
- Upgraded Kitchen / Breakfast Room / Snug (adjacent to Kitchen)
- Generous Lounge (dual aspect) with Wood Burning Stove
- Spacious Three Double Bedrooms (each with built-in wardrobes)

Set on an exceptionally spacious plot at the edge of Nassington village, within a small cul-de-sac of nine prestige executive homes, this attractive Cotswold stone-built property combines style, comfort, and individuality-being the only home of its type in this location.

The accommodation is immaculately presented and briefly comprises: a stunning refitted kitchen/diner with an opening to a cosy snug complete with media wall (with built-in log effect electric fire), a bright lounge featuring a new wood-burning stove, and an impressive addition of an atrium / enclosed porch to the front of the home. To the first floor are three well-proportioned double bedrooms and a modern bathroom, plus an ensuite to the principal bedroom.



Externally, the property benefits from extensive off-road parking for up to seven vehicles with a single garage with automated electric door. The rear garden has been professionally landscaped to create a private (not overlooked) and tranquil retreat, fully enclosed by a tree belt to the rear-ideal for entertaining, relaxing, or family use, providing both sun and shade as desired.

This beautifully maintained home epitomises high-quality modern living in a sought-after rural setting. Early viewing is strongly recommended to fully appreciate the space, upgrades, and seclusion on offer.



Prebendal Close, Nassington, Peterborough

Approximate Gross Internal Area

Main House = 137 Sq M/ 1474 Sq Ft

Garage = 17 Sq M/ 183 Sq Ft

Outbuilding = 8 Sq M/ 86 Sq Ft

Total = 162 Sq M/ 1743 Sq Ft



Outbuilding

Ground Floor

First Floor

Please note that the location of doors, windows and other items are approximate and this floorplan is to be used for illustrative purposes only. Unauthorized reproduction is prohibited.

Selling your property?

Contact us to arrange a FREE home valuation.

 01733 380956

 Unit 5, The Barns Milton Lane, Castor, PETERBOROUGH,
Cambridgeshire , PE5 7DH

 info@hurfords.co.uk

 www.hurfords.co.uk



 SCAN ME



Hurfords is a trading name of Sharman Quinney Holdings Limited which is registered in England and Wales under company number 4174227, Registered Office is Cumbria House, 16-20 Hockliffe Street, Leighton Buzzard, Bedfordshire, LU7 1GN. VAT Registration Number is 500 2481 05.

1: These particulars do not constitute part or all of an offer or contract. 2: The measurements indicated are supplied for guidance only and as such must be considered incorrect. 3: Potential buyers are advised to recheck the measurements before committing to any expense. 4: Hurfords has not tested any apparatus, equipment, fixtures, fittings or services and it is the buyers interests to check the working condition of any appliances. 5: Hurfords has not sought to verify the legal title of the property and buyers must obtain verification from their legal representative. 6: Intending purchasers will be asked to produce identification documentation at a later stage and we would ask your co-operation in order that there will be no delay in agreeing the sale. Ref: HUC104240 - 0005

