



Hurfords

Peterborough Road, Castor, Peterborough Freehold £750,000



# Key Features

 4  3  C  F

- Detached Family Home
- Extended to Offer Self Contained Annexe
- Four Bedrooms
- Open Countryside to Rear
- Feature Extended Kitchen Diner

Situated in the sought-after heart of Castor Village, this established and extended detached family home offers generous living space, flexible accommodation, and stunning open countryside views to the rear. Ideally suited to a growing or large family, the property combines village charm with excellent potential to personalise.

The main house features an impressive open-plan kitchen-diner, perfect for modern family life, complemented by a separate lounge and ample storage throughout. The extended kitchen provides a practical and social hub to the home, ideal for both everyday living and entertaining.



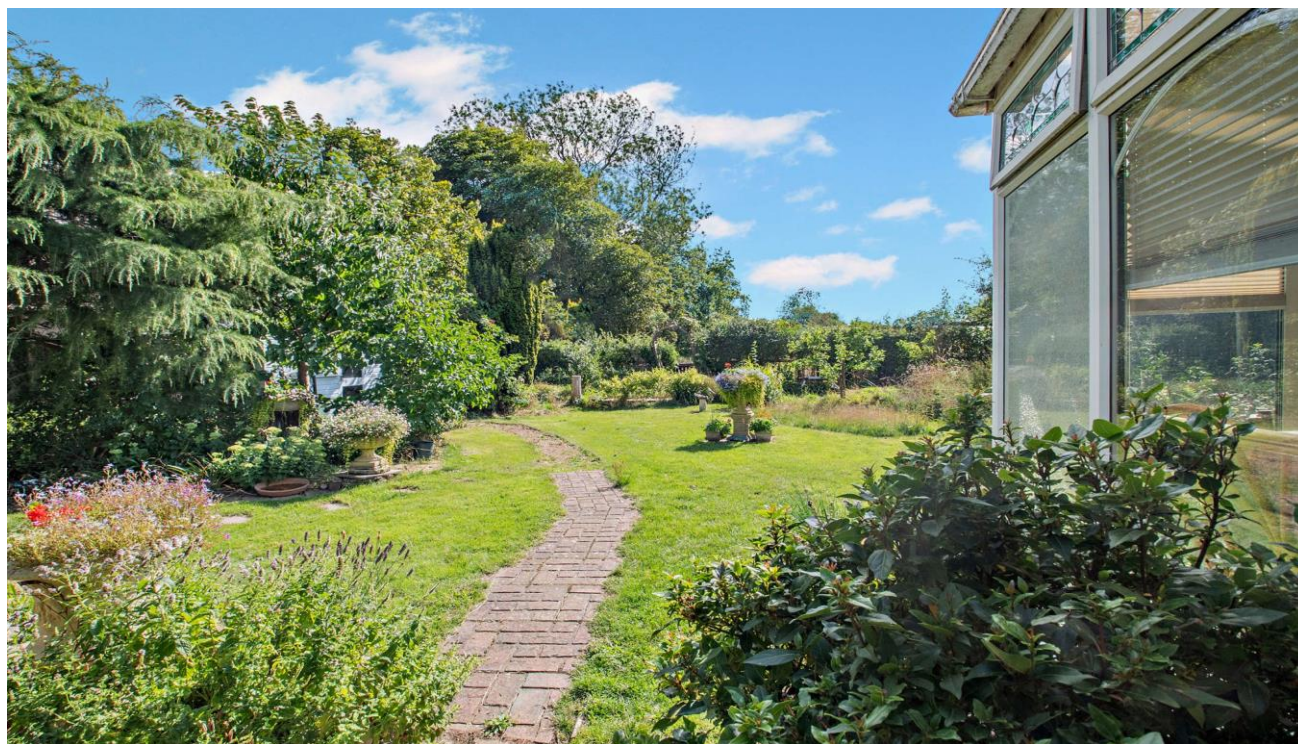


To the side, the first room is the large Drawing Room currently used as the office, library and for entertaining. It features a log burner and fitted bookshelves. The remainder of the ground floor derives from a versatile annex-style extension—originally designed as a self-contained living space—includes a fitted kitchen, ground floor shower room, whilst the first floor offers, three additional bedrooms and a family bathroom. The property also benefits from a wet room off the main upstairs bedroom.

This layout offers the perfect solution for multi-generational living, guest accommodation, or a home office setup.

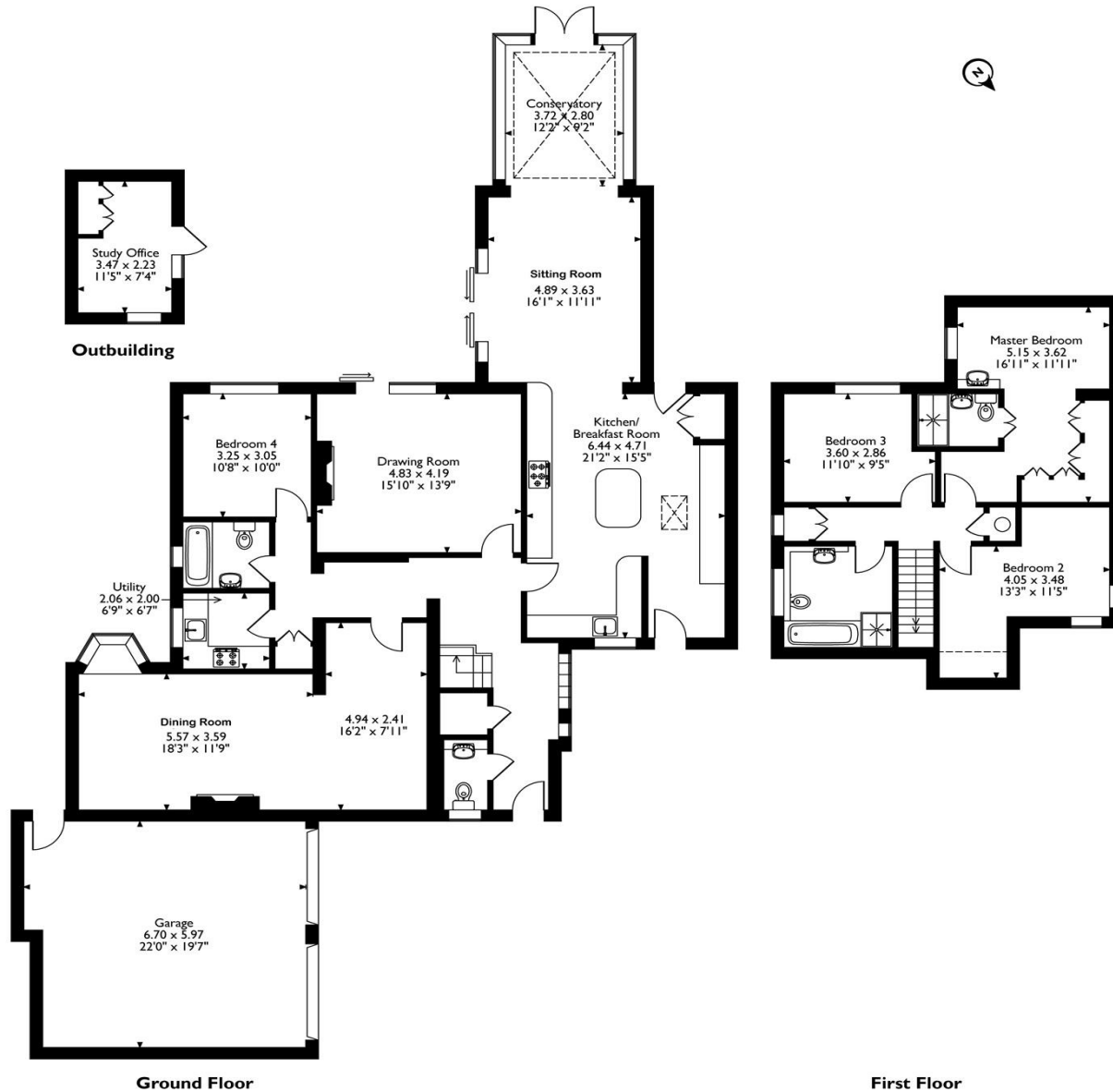
Externally, the property boasts off-road parking and a double garage to the front, while the generous rear garden backs onto beautiful open fields, offering both privacy and tranquil rural views.

While the home is well-proportioned and thoughtfully extended, it would benefit from a touch of TLC—providing the ideal canvas for a buyer looking to add their own stamp and create their perfect family home.





Peterborough Road, Castor, Peterborough  
 Approximate Gross Internal Area  
 Main House= 220 Sq M/2368 Sq Ft  
 Garage = 39 Sq M/420 Sq Ft  
 Outbuilding = 8 Sq M/86 Sq Ft  
 Total = 267 Sq M/2874 Sq Ft



Please note that the location of doors, windows and other items are approximate and this floorplan is to be used for illustrative purposes only. Unauthorized reproduction is prohibited.

# Selling your property?

Contact us to arrange a FREE home valuation.

 01733 380956

 Unit 5, The Barns Milton Lane, Castor, Peterborough,  
Cambridgeshire, PE5 7DH

 [Castor@hurfords.co.uk](mailto:Castor@hurfords.co.uk)

 [www.hurfords.co.uk](http://www.hurfords.co.uk)



 SCAN ME



Hurfords is a trading name of Sharman Quinney Holdings Limited which is registered in England and Wales under company number 4174227, Registered Office is Cumbria House, 16-20 Hockliffe Street, Leighton Buzzard, Bedfordshire, LU7 1GN. VAT Registration Number is 500 2481 05.

1: These particulars do not constitute part or all of an offer or contract. 2: The measurements indicated are supplied for guidance only and as such must be considered incorrect. 3: Potential buyers are advised to recheck the measurements before committing to any expense. 4: Hurfords has not tested any apparatus, equipment, fixtures, fittings or services and it is the buyers interests to check the working condition of any appliances. 5: Hurfords has not sought to verify the legal title of the property and buyers must obtain verification from their legal representative. 6: Intending purchasers will be asked to produce identification documentation at a later stage and we would ask your co-operation in order that there will be no delay in agreeing the sale. Ref: HUC104136 - 0004

