



Hurfords

Waters Edge, Wansford Peterborough Freehold: Offers Over £750,000

Key Features

4 2 C E

- Large Connected Garage
- Exceptional Living Experience
- Split Level Accommodation
- Separate Office
- No Onward Chain

Nestled within a highly sought-after gated development on the outskirts of the ever-popular and picturesque historic village of Wansford, this truly exceptional four-bedroom townhouse offers an outstanding blend of modern luxury and tranquil marina side living.

Set across three beautifully arranged storeys and extending to approximately 2,000 square feet, this immaculate home has been thoughtfully designed to cater to a range of lifestyles-ideal for discerning buyers seeking a stylish residence, or even those looking for an elegant solution for multi-generational living.

The accommodation flows effortlessly, with generous proportions throughout, showcasing high-quality finishes and an abundance of natural



light. The ground floor welcomes you with a spacious and versatile living area, possibly Ideal for multi-generational living for extended families.

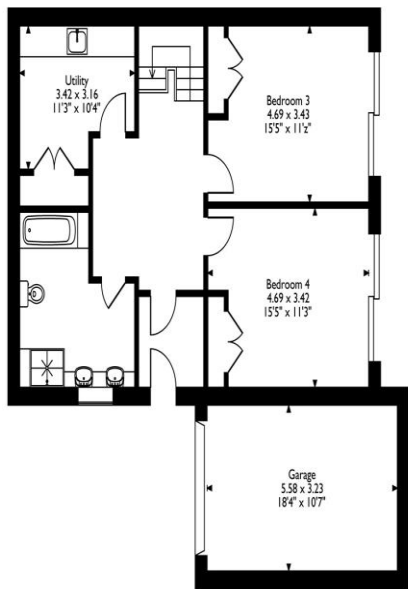
While the upper floors offer further reception space, well-appointed bedrooms, and luxurious bathrooms-ensuring both comfort and practicality at every level.

One of the true highlights of this property is its direct access to the water, enjoying private mooring and full boating rights-perfect for those who appreciate riverside leisure. Complementing this, the home also features expansive balcony space and an extensive decking area, ideal for entertaining or simply enjoying the serene surroundings.

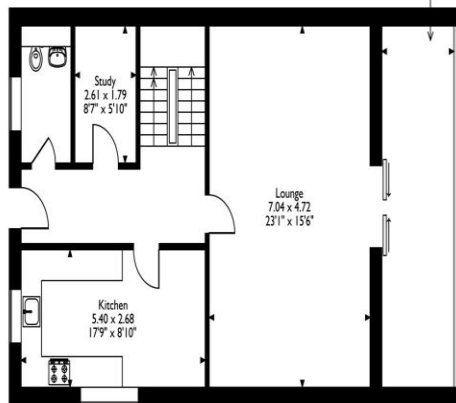
This rare opportunity combines modern elegance with the timeless charm of Wansford village life, making it a must-see for buyers seeking a premium lifestyle in a peaceful yet well-connected location.



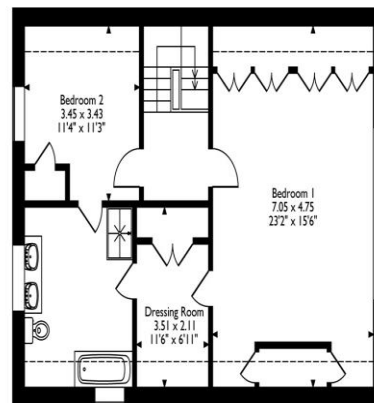
Waters Edge, Wansford, Peterborough
 Approximate Gross Internal Area
 Main House = 207 Sq M/2228 Sq Ft
 Garage = 18 Sq M/194 Sq Ft
 Total = 225 Sq M/2422 Sq Ft



Lower Ground Floor



Ground Floor



First Floor

Please note that the location of doors, windows and other items are approximate and this floorplan is to be used for illustrative purposes only. Unauthorized reproduction is prohibited.

Selling your property?

Contact us to arrange a FREE home valuation.

 01733 380956

 Unit 5, The Barns Milton Lane, Castor, PETERBOROUGH, Cambridgeshire , PE5 7DH

 info@hurfords.co.uk

 www.hurfords.co.uk



 SCAN ME



Hurfords is a trading name of Sharman Quinney Holdings Limited which is registered in England and Wales under company number 4174227, Registered Office is Cumbria House, 16-20 Hockliffe Street, Leighton Buzzard, Bedfordshire, LU7 1GN. VAT Registration Number is 500 2481 05.

1: These particulars do not constitute part or all of an offer or contract. 2: The measurements indicated are supplied for guidance only and as such must be considered incorrect. 3: Potential buyers are advised to recheck the measurements before committing to any expense. 4: Hurfords has not tested any apparatus, equipment, fixtures, fittings or services and it is the buyers interests to check the working condition of any appliances. 5: Hurfords has not sought to verify the legal title of the property and buyers must obtain verification from their legal representative. 6: Intending purchasers will be asked to produce identification documentation at a later stage and we would ask your co-operation in order that there will be no delay in agreeing the sale. Ref: HUC103814 - 0002

