



1 Gables Close, Peterborough Freehold £850,000



# Key Features



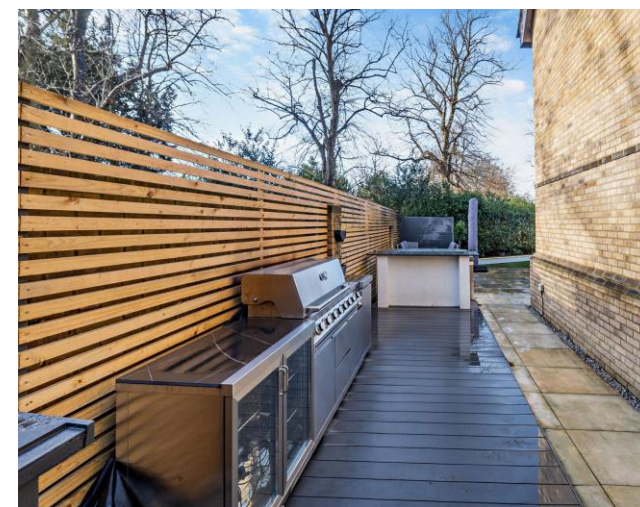
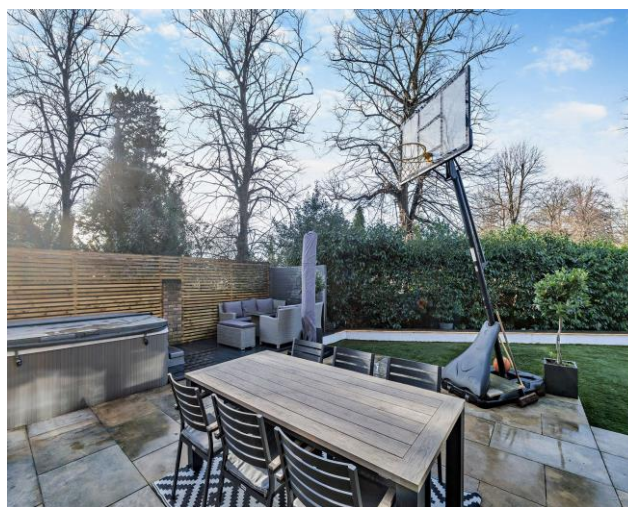
- Detached 5 Bed 4 bathroom house
- High Specification throughout
- Open-plan kitchen, dining and family area
- 2 Reception rooms
- Master suite occupying third floor

Number One, Gables Close is a well-presented property offering plenty of space and modern open-plan living, perfect for family life.

On the ground floor, there is an entrance hallway leading to two reception rooms, offering flexibility to suit your needs. The open-plan kitchen and dining room is a practical and social space, with a utility area and 2 sets of bi-fold doors to the rear garden.

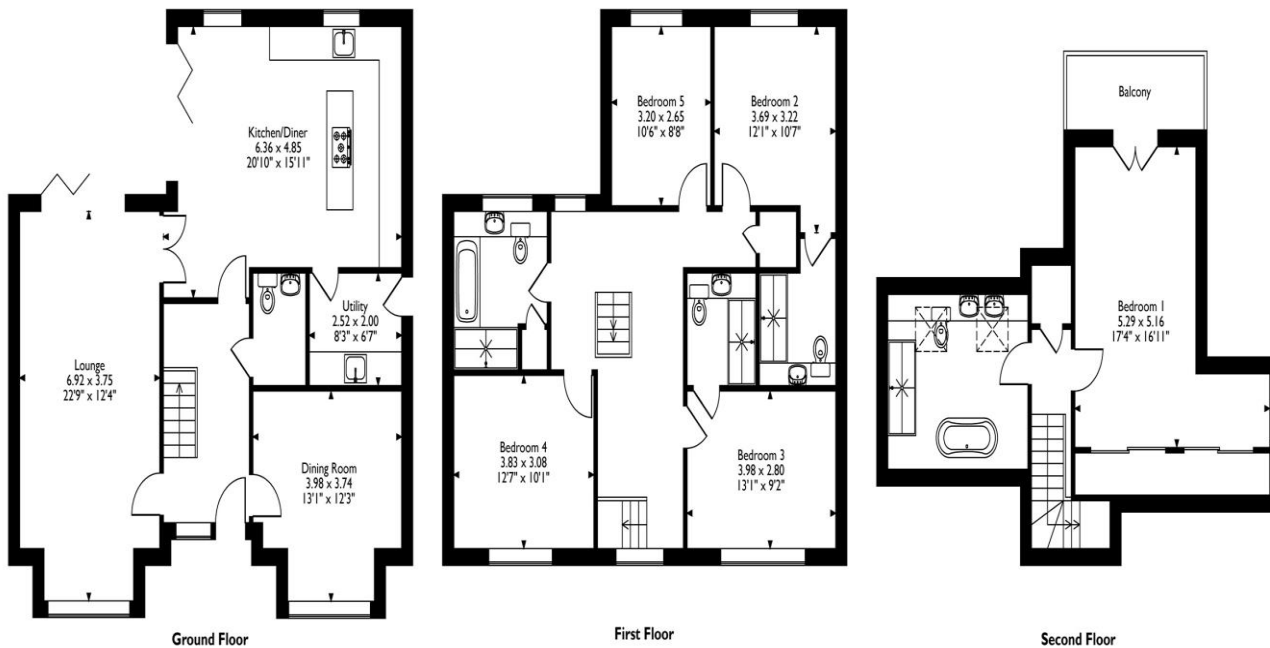
The first floor has four good-sized bedrooms, two with en-suite bathrooms. The fourth bedroom could also be used as a study or an additional reception room if needed. A family bathroom is also on this floor.

The master bedroom suite is located on the top floor. This room features vaulted ceilings, built-in storage, a dressing area, and an en-suite bathroom with a





Gables Close, Peterborough  
Approximate Gross Internal Area  
208 Sq M/2243 Sq Ft



Please note that the location of doors, windows and other items are approximate and this floorplan is to be used for illustrative purposes only. Unauthorized reproduction is prohibited.

freestanding bath. It also has a private balcony overlooking the garden.

Outside, the property includes a block-paved driveway providing off-road parking, access to a double garage, and a good-sized rear garden with a patio area, perfect for outdoor entertaining.

Number One, Gables Close is a practical and well-designed home, ideal for modern living.

The property also benefits from Solar Panels and Battery System to keep energy usage to a minimum.

#### Location

Gables Close is located off Thorpe Road which is a popular and central location within Peterborough, situated close to the City Centre which is approximately half a mile away and has the main shopping district, including a diverse range of restaurants and eateries, extensive retail opportunity, medical centre, the historic Cathedral and also with the main line train station providing fast and frequent rail links into London Kings Cross, with an advertised journey time of around 50 minutes. Ferry Meadows Country Park can be found nearby and offers, walking and cycling routes as well as extensive outdoor recreational activities such as water sports, golf courses, children's play parks and cafes. With the beautiful open rolling countryside of Cambridgeshire, Northamptonshire, Rutland and Norfolk all very accessible.

To view this property call Hurfords on: 01733 380956

# Selling your property?

Contact us to arrange a FREE home valuation.

 01733 380956

 Unit 5, The Barns Milton Lane, Castor, PETERBOROUGH, Cambridgeshire , PE5 7DH

 [info@hurfords.co.uk](mailto:info@hurfords.co.uk)

 [www.hurfords.co.uk](http://www.hurfords.co.uk)



 SCAN ME



Hurfords is a trading name of Sharman Quinney Holdings Limited which is registered in England and Wales under company number 4174227, Registered Office is Cumbria House, 16-20 Hockliffe Street, Leighton Buzzard, Bedfordshire, LU7 1GN. VAT Registration Number is 500 2481 05.

1: These particulars do not constitute part or all of an offer or contract. 2: The measurements indicated are supplied for guidance only and as such must be considered incorrect. 3: Potential buyers are advised to recheck the measurements before committing to any expense. 4: Hurfords has not tested any apparatus, equipment, fixtures, fittings or services and it is the buyers interests to check the working condition of any appliances. 5: Hurfords has not sought to verify the legal title of the property and buyers must obtain verification from their legal representative. 6: Intending purchasers will be asked to produce identification documentation at a later stage and we would ask your co-operation in order that there will be no delay in agreeing the sale. Ref: HUC103189 - 0003

