



Oliver Road ,Hampton Vale Peterborough Freehold: £500,000

Hurford's

# Key Features



- Large open plan ground floor/Separate first floor lounge
- Double garage and driveway
- 2 en-suite and family bathrooms
- Utility Room & Study
- Impeccably presented throughout

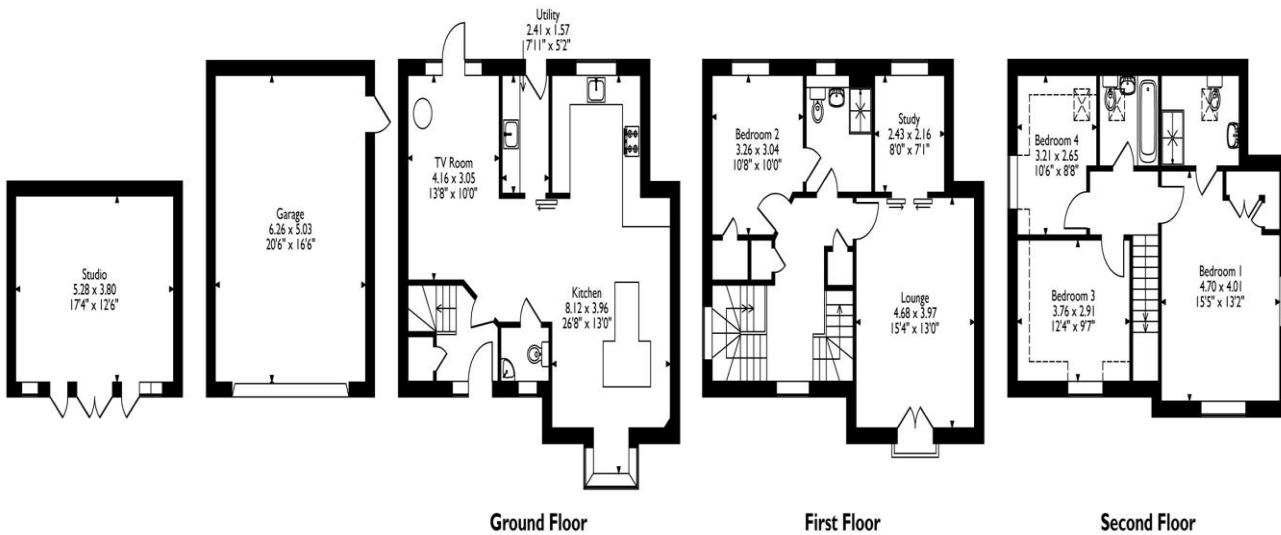
Indulge in the epitome of refined living within this impeccably presented three-storey, 4-bedroom detached home. The open-plan design of the ground floor sets the stage for a harmonious blend of modernity and functionality, creating an inviting atmosphere for both daily living and entertaining. As you traverse the rest of the home, the generously proportioned rooms throughout offer a sense of space and flexibility. The allure of this property extends beyond its interiors, where beautiful views unfold in both directions. Gaze out to the front, and be captivated by the scenic panorama of lakes that lend an air of tranquillity. Meanwhile, the rear of the home presents a soothing backdrop with views across a nature reserve, providing a serene retreat within the comfort of your own space. Step into the spacious west-facing rear garden, an



outdoor haven that invites relaxation and alfresco enjoyment, completed with a superb stand-alone studio/gym. Immerse yourself in the lush greenery, creating a perfect backdrop for gatherings or quiet moments of reflection. The double garage adds a practical touch, seamlessly blending functionality with aesthetics. Positioned for both convenience and connectivity, the property offers easy access to Peterborough train station, while the nearby A1 road link ensures efficient connectivity to various destinations both North & South. In essence, this residence is an harmonious symphony of thoughtful design, scenic beauty, and accessibility, creating a home that not only meets but exceeds the expectations of discerning homeowners seeking a blend of comfort and sophistication.



Oliver Road, Hampton Vale, Peterborough  
Approximate Gross Internal Area  
Main House = 163 Sq M/1755 Sq Ft  
Garage = 31 Sq M/334 Sq Ft  
Outbuilding = 20 Sq M/215 Sq Ft  
Total = 214 Sq M/2304 Sq Ft



Please note that the location of doors, windows and other items are approximate and this floorplan is to be used for illustrative purposes only. Unauthorized reproduction is prohibited.

# Selling your property?

Contact us to arrange a FREE home valuation.

 01733 380956

 Unit 5, The Barns Milton Lane, Castor, PETERBOROUGH, Cambridgeshire , PE5 7DH

 [castor@hurfords.co.uk](mailto:castor@hurfords.co.uk)

 [www.hurfords.co.uk](http://www.hurfords.co.uk)



 SCAN ME



Hurfords is a trading name of Sharman Quinney Holdings Limited which is registered in England and Wales under company number 4174227, Registered Office is Cumbria House, 16-20 Hockliffe Street, Leighton Buzzard, Bedfordshire, LU7 1GN. VAT Registration Number is 500 2481 05.

1: These particulars do not constitute part or all of an offer or contract. 2: The measurements indicated are supplied for guidance only and as such must be considered incorrect. 3: Potential buyers are advised to recheck the measurements before committing to any expense. 4: Hurfords has not tested any apparatus, equipment, fixtures, fittings or services and it is the buyers interests to check the working condition of any appliances. 5: Hurfords has not sought to verify the legal title of the property and buyers must obtain verification from their legal representative. 6: Intending purchasers will be asked to produce identification documentation at a later stage and we would ask your co-operation in order that there will be no delay in agreeing the sale. Ref: HUC103843 - 0002

