

London Road, PE8 6JE
Wansford
Peterborough
£240,000

Hurfords



1



1



G



A

- Stone Built End of Terrace Home
- Situated in the Heart of Wansford Village
- Full of Character and Charm
- Good-Size Cellar
- Double Bedroom and En-Suite Shower Room
- Close to Local Transport Links and Amenities

40 London Road
Wansford
Peterborough
PE8 6JE

Upon entering, you're greeted by a spacious sitting room adorned with a captivating feature fireplace and convenient storage fittings. The ambiance is warm and inviting, perfect for relaxation or hosting guests.

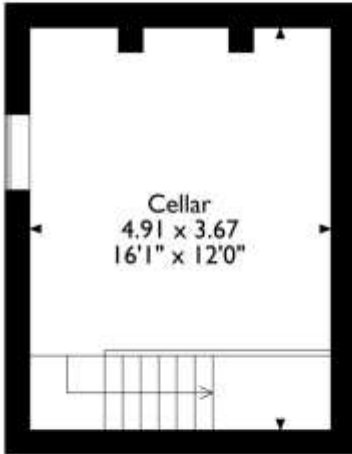
Adjacent to the sitting room lies the well-appointed kitchen, boasting a range of base and wall units, and offering access to the delightful courtyard garden, ideal for enjoying alfresco dining or simply soaking up the sunshine. Descend the stairs to discover the cellar, a versatile space for customization to suit your needs, featuring exposed stonework.

Ascending to the first floor, you'll find the cosy double bedroom, complete with access to an en-suite shower room fitted with a stylish three-piece suite, ensuring comfort and convenience. Outside, the property enjoys a prime location in the heart of Wansford village, boasting excellent transport links and local amenities at your doorstep. The rear courtyard garden is predominantly laid to shingle, provides an idyllic setting for entertaining loved ones or enjoying peaceful moments in the warmer months. Don't miss this opportunity to make this enchanting home yours, where historic charm meets contemporary living in one of Wansford's most coveted locations. Wansford is a picturesque village, set on the banks of The River Nene and equidistant between the market town of Stamford the Cathedral City of Peterborough, both of which offer a wide variety of amenities, including extensive retail opportunity, restaurants and eateries and leisure facilities. The village itself is well served with a convenience store, post office, two public houses, a hotel and doctors surgery. Wansford also has excellent schooling in the area, with public schools in both Oundle and Stamford, plus is within the catchment area for the sought after Arthur Mellows Village College at Glington. Wansford is surrounded by open countryside and offers a choice of walking routes also providing easy access to The River Nene.

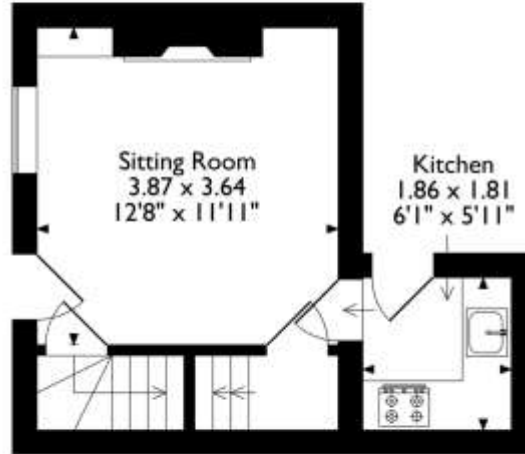


Hurfords

London Road, Wansford, Peterborough
Approximate Gross Internal Area
58 Sq M/625 Sq Ft



Cellar



Ground Floor



First Floor

Please note that the location of doors, windows and other items are approximate and this floorplan is to be used for illustrative purposes only. Unauthorized reproduction is prohibited.



Rooms/Measurements

Sitting Room 12'8" x 11'11"
Kitchen 6'1" x 5'11"
Bedroom One 12'9" x 12'0"
Cellar 16'1" x 12'0"

TENURE: FREEHOLD



Hurfords



SCAN ME

Selling your property?
Contact us to arrange a FREE home valuation.

01733 380956

5 The Barns, Milton Lane, Castor, Peterborough, PE5 7DH

castor@hurford.co.uk

www.hurfords.co.uk

Hurfords is a trading name of Sharman Quinney Holdings Limited which is registered in England and Wales under company number 4174227, Registered Office is Cumbria House, 16-20 Hockliffe Street, Leighton Buzzard, Bedfordshire, LU7 1GN. VAT Registration Number is 500 2481 05. 1: These particulars do not constitute part or all of an offer or contract. 2: The measurements indicated are supplied for guidance only and as such must be considered incorrect. 3: Potential buyers are advised to recheck the measurements before committing to any expense. 4: Hurfords has not tested any apparatus, equipment, fixtures, fittings or services and it is the buyer's interests to check the working condition of any appliances. 5: Hurfords has not sought to verify the legal title of the property and buyers must obtain verification from their legal representative. 6: Intending purchasers will be asked to produce identification documentation at a later stage and we would ask your co-operation in order that there will be no delay in agreeing the sale. Ref: HUC103663 PDAF 0001

