

Hurford's

Plot K Winsor Crescent, Hampton Vale Peterborough Freehold: OIEO £950,000

# Key Features



- Impressive 4 Double Bedroom Detached Home
- All Bedrooms with En-Suites
- Over 3800sqft of Accommodation
- Double Garage
- Option of Choosing your own Kitchen & Tiles

Entering through the front door is a generous entrance hall with stairs to the first floor. The ground floor boasts 4 large double bedrooms, along with 3 en-suites all ranging in size. The master is a fabulous room offering 2 sets of walk-in wardrobes in a hugely generous space.

Additionally on the ground floor there is the benefit of a large study, perfect for workers from home and a large utility room with access to the rear of the property. Well thought out, the ground floor has plenty of storage both under the stairs but also with further storage cupboards. Our vendor has designed a space for a lift for clients requiring one which is fully built in place ready for installation but alternatively offers further storage if not required.

Moving upstairs in to a generous landing space there is a huge diverse entertaining space. With



large bi-fold doors leading on to a balcony you can entertain whilst enjoying views over the nature reserved across the road. The premium finish includes glass balustrades with brushed metal spindles, a fabulous finish to the balcony. Further first floor rooms include a vast lounge area featuring 2 glass roof boxes encapsulating light in to the room. To the left is a great universal room which could be used as a playroom, gym or further office space subject to requirements or even a fifth bedroom. To the front is allocated for the kitchen. All the facilities have been put in but our vendor is awaiting a buyer to choose a colour scheme prior to purchase, subject to the taste of a buyer.

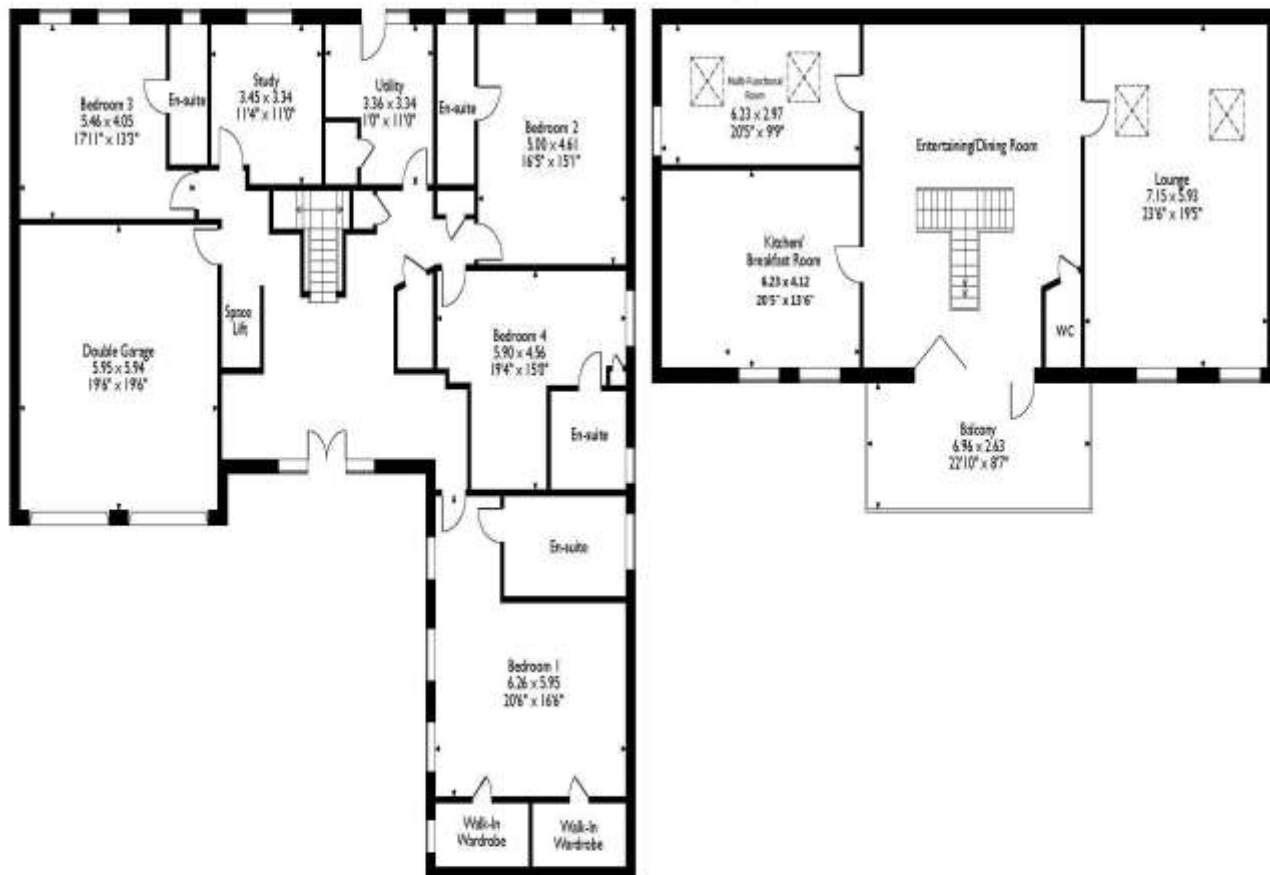
Externally there is plenty of off road parking on the drive and has the addition of a double garage to provide additional storage. The garden wraps around the house with plenty of space for families with a newly fitted 6kw PV solar panel system.

Our vendor is still completing the home and purchasing it now gives options on what finishes they would like including flooring, bathrooms and kitchen colour scheme.

This property must be viewed to take in the huge amount of accommodation on offer!



The White House, Winsor Crescent, Peterborough  
Approximate Gross Internal Area  
356 Sq M/3827 Sq Ft



Ground Floor

First Floor

Please note that the location of doors, windows and other items are approximate and this floorplan is to be used for illustrative purposes only. Unauthorized reproduction is prohibited.

# Selling your property?

Contact us to arrange a FREE home valuation.

 01733 380956

 Unit 5, The Barns Milton Lane, Castor, PETERBOROUGH, Cambridgeshire , PE5 7DH

 [castor@hurfords.co.uk](mailto:castor@hurfords.co.uk)

 [www.hurfords.co.uk](http://www.hurfords.co.uk)



 SCAN ME



Hurfords is a trading name of Sharman Quinney Holdings Limited which is registered in England and Wales under company number 4174227, Registered Office is Cumbria House, 16-20 Hockliffe Street, Leighton Buzzard, Bedfordshire, LU7 1GN. VAT Registration Number is 500 2481 05.

1: These particulars do not constitute part or all of an offer or contract. 2: The measurements indicated are supplied for guidance only and as such must be considered incorrect. 3: Potential buyers are advised to recheck the measurements before committing to any expense. 4: Hurfords has not tested any apparatus, equipment, fixtures, fittings or services and it is the buyers interests to check the working condition of any appliances. 5: Hurfords has not sought to verify the legal title of the property and buyers must obtain verification from their legal representative. 6: Intending purchasers will be asked to produce identification documentation at a later stage and we would ask your co-operation in order that there will be no delay in agreeing the sale. Ref: HUC103397 - 0006

