



The Methodist  
Chapel





# A STRIKING APPROACH



Originally built in 1887, The Methodist Chapel is a magnificent example of sensitive architectural conversion. This former place of worship has been transformed into a seven-bedroom detached family home of exceptional character.

Positioned on the well-regarded Cross Street, the property sits behind elegant wrought iron estate railings and within well-stocked, wraparound gardens. The sweeping driveway provides ample parking and leads to an oversized double garage with power and lighting.



## RECEPTION SPACES

The home opens via the original chapel vestibule into a grand and welcoming interior, where the architectural drama of the past meets the comfort of the present.

The principal lounge is an impressive yet inviting space. The proportions here are truly generous, allowing for multiple seating areas that can easily adapt to different occasions, while part double-height space and large arched windows flood the room with natural light.







## TIMELESS ELEGANCE

One area is perfectly designed for fireside conversation, with a striking Burley log burner as the centrepiece, casting a warm glow during the cooler months. Another corner accommodates a dining area, while ample room remains for a piano, creating a superb setting for entertaining.

Whether hosting lively gatherings or enjoying a quiet evening, the room's atmosphere adapts effortlessly to the moment.

A separate, peaceful study is accessible next to the stairs; perfect for home working or quiet retreat.





## THE HEART OF THE HOME

At the heart of the home, the kitchen diner blends charm and practicality in perfect balance. Solid wood and granite worktops complement the neutral cabinetry, creating a timeless and welcoming aesthetic.

The well-appointed, spacious kitchen is equipped with fitted appliances, including two fridges and a dishwasher, along with ample space for a Falcon range cooker.







## TIME TO DINE

Spaciously designed for both cooking and socialising, the room offers generous preparation space, abundant storage, and a relaxed dining area that encourages long, sociable meals. The adjoining snug adds another layer of comfort, providing a cosy corner for morning coffee, homework sessions or simply unwinding at the end of the day.





## DYNAMIC SPACES

Just beyond, the utility room is far more than a functional afterthought. Its full-width bi-fold doors open completely to frame uninterrupted views over the garden, with the wildlife pond and open countryside beyond.

It is a daily reminder of the beauty outside and provides a tranquil spot to pause, even in the midst of chores. With direct access to the garage, a side entrance makes it perfect for returning from muddy walks with dogs or children in tow, and a ground-floor WC is positioned conveniently nearby.

Leading from the utility is a versatile rear sitting room. Once a vestry and later incorporated into a suite with the nearby bedroom and wet room, it is currently enjoyed as a quiet retreat but could also make an ideal library, music room, or creative space.





# ENDLESS POSSIBILITIES

Completing the ground floor are two well-proportioned double bedrooms, linked by a stylish Jack and Jill wet room that enhances both convenience and design. Bedroom Seven is currently arranged as a craft room / studio, providing additional flexibility to suit a variety of needs.

Together, these rooms create an excellent opportunity for diverse living; whether serving as guest accommodation, a dedicated home office, or private retreats for family members.







## STYLE, ELEVATED

The galleried landing is one of the most captivating features of The Methodist Chapel, and it is far more than just a walkway between rooms. Overlooking the reception space below, it creates a dramatic visual link between the levels while offering a unique area in its own right.

Here, the current owners have created an impressive entertaining space, complete with a pool table for friendly competition and a cosy reading corner for quieter moments.





# A HAVEN FOR ENTERTAINMENT

This versatile setting is designed to complement a variety of lifestyles, offering the perfect balance between sociable gatherings and quiet retreat. Thanks to the building's soaring ceilings, open space and original architecture, the acoustics are exceptional, making this an atmospheric spot to enjoy music.

Whether you're entertaining, relaxing with a book, or filling the space with sound, the galleried landing embodies the perfect blend of character, function and charm.







# REFINED COMFORT



The principal bedroom is a true sanctuary, with a wall of built-in wardrobes, vaulted ceilings and beautiful exposed beams that draw the eye upward. The sense of scale here is both dramatic and calming, creating a space that feels luxurious yet entirely welcoming.





## A PRIVATE SANCTUARY

A clever use of space above the en-suite provides additional storage without encroaching on the generous floor space, allowing the room to remain open and uncluttered while still highly practical.

This thoughtful design ensures every inch of the room is both functional and visually impressive. An en-suite shower room offers both style and privacy, perfectly complementing the character of the space.

Together, these features create a principal suite that balances architectural drama with everyday comfort, making it an inviting retreat for any time of day.







## RESTFUL RETREATS

In this section of the house, there are two further double bedrooms, each rich in character and thoughtfully designed.

Original exposed beams highlight the home's heritage, while elegant arched windows frame views of the outdoors and draw in natural light. These features combine to create inviting spaces that balance both historic charm with everyday comfort, offering restful retreats with a distinctive sense of place.



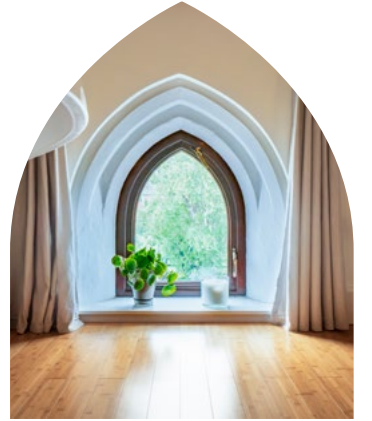




## BATHE IN STYLE

These rooms share a substantial four-piece family bathroom, thoughtfully designed to combine style and practicality. A shower and a beautiful clawfoot freestanding bath create the perfect balance of modern convenience and classic indulgence, with the bath inviting long, luxurious soaks.

Overhead, original exposed beams add a touch of character, while a graceful floor-level arched window subtly reflects the home's heritage and architectural charm.







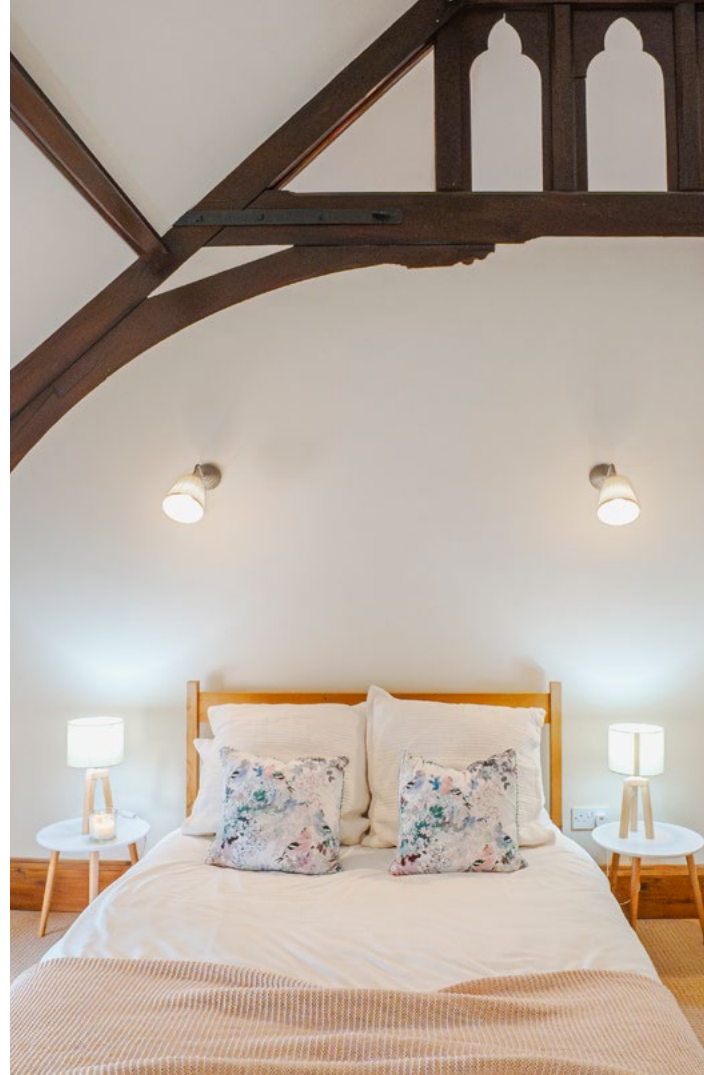
## A BATHROOM OF DISTINCTION

The room itself is large, light-filled and finished with neutral tiles, a warm wooden floor, and a window framing views of the surrounding landscape.

Ample space for storage ensures the bathroom is as functional as it is elegant, making it a welcoming retreat for everyday use as well as moments of relaxation. The combination of traditional details and contemporary finishes results in a space that feels both timeless and effortlessly comfortable.







## SWEET SLUMBER

Two additional double bedrooms are accessed via a separate private staircase, creating a self-contained suite that is perfect for long-term guests, independent teenagers or visiting family.

With a little reconfiguration, this area also has the potential to form an indulgent master suite with dressing area, lounge space and en-suite, making it a truly luxurious retreat within the home.







## OUTDOOR LIVING

The grounds have been carefully designed to create a variety of outdoor experiences. Lawns are dotted with fruit trees, providing space for children to play or for summer gatherings. A raised vegetable garden offers the joy of growing your own produce, while the large Alton Cedar Greenhouse is both a functional asset and an attractive garden feature.

Overlooking the wildlife pond and beyond to open farmland is the renovated outbuilding transformed into a stylish garden room. It is a tranquil retreat for reading, working or simply watching the ever-changing landscape. The pond itself is a natural haven for wildlife, adding movement and life to this idyllic setting.

A pergola-framed dining area provides the perfect setting for alfresco meals, whether for relaxed family suppers or entertaining guests on summer evenings.



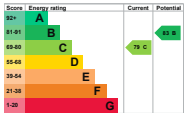
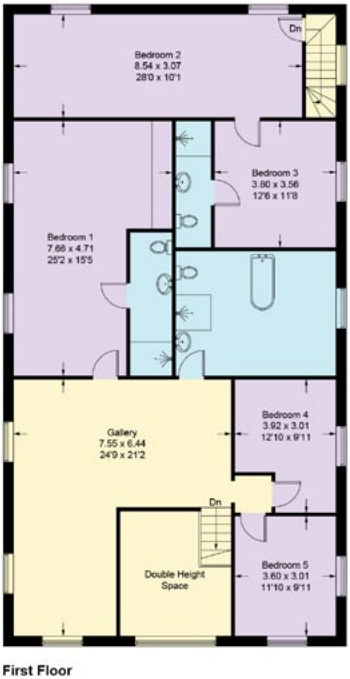


# OUT & ABOUT

Sturton-le-Steeple is a quaint highly regarded Nottinghamshire village with a welcoming community. At its heart is The Reindeer, a friendly pub known for its warm atmosphere, traditional fare and busy events calendar; the perfect place to enjoy a drink with neighbours or family. Local amenities include a well-rated primary school, village hall and a charming village green.

The surrounding countryside offers an extensive network of scenic footpaths and bridleways, while nearby South Wheatley is home to The Leys Bakery and Café, serving freshly baked artisan bread, pastries and local produce. Popular with residents, it's ideal for breakfast treats, lunch with friends or a relaxed weekend coffee. The market towns of Retford and Gainsborough provide a wider range of shopping, dining and transport options, including direct rail services to London.

Thoughtfully designed to celebrate its heritage while meeting the needs of modern life, The Methodist Chapel combines soaring ceilings, generous proportions and original features with versatile accommodation ideal for multi-generational living.



## FLOOR PLAN

Approximate Gross  
Internal Area = 364 sq m / 3918.05 sq ft.  
Outbuilding 1 = 34 sq m / 365.97 sq ft.  
Total = 398 sq m / 4284.02 sq ft.

Illustration For Identification Purposes Only.  
Measurements Are Accurate. Not To Scale.

Significant insulation upgrades were made during refurbishment, reflected in the chapel's strong EPC C rating

Smith & Co Estates use all reasonable endeavours to supply accurate property information in line with the Consumer Protection from Unfair trading Regulations 2008. These property details do not constitute any part of the offer or contract and all measurements are approximate. The matters in these particulars should be independently verified by prospective buyers. It should not be assumed that this property has all the necessary planning, building regulation or other consents. Any services, appliances and heating system(s) listed have not been checked or tested. Purchasers should make their own enquiries to the relevant authorities regarding the connection of any service. No person in the employment of Smith & Co Estates has any authority to make or give any representations or warranty whatever in relation to this property or these particulars or enter into any contract relating to this property on behalf of the vendor. Floor plan not to scale and for illustrative purposes only.

Some of the images and floorplans shown throughout the marketing and within the brochure are computer generated images and may not be accurate and therefore should not be relied upon for decision making. The accuracy of the dimensions, layout and visuals are not guaranteed and may be subject to change.





Presented By

Smith & Co.  
e s t a t e s

Unwin Suite, Innisdoon, 1 Crow Hill Drive, Mansfield NG19 7AE

To view The Methodist Chapel, call our team on 01623 392352 or email [info@smithandcoestates.co.uk](mailto:info@smithandcoestates.co.uk)



scan to view video



poetry.effort.breeze