

Five  
Banks  
Crescent



## A Refined Family Home Designed For Modern Living

Tucked away at the end of a peaceful cul-de-sac, No. 5 Banks Crescent enjoys a wonderfully private setting where calm and convenience meet. A set of timber gates opens onto a wide, block-paved driveway offering ample parking and a smart first impression. To one side, the large single integral garage provides both practicality and purpose, fitted with power and lighting.



It's ideal for storage, a workshop, or perhaps even a home gym. Its distinctive green timber door mirrors the front entrance, creating a striking sense of symmetry and character that hints at the thoughtful style found within. Framed by well-kept planting and the soft hush of this secluded spot, the approach feels instantly inviting, a home that quietly welcomes you in.





## A Warm Welcome

Step through the traditional timber front door into a welcoming entrance hall that immediately sets the tone for the home ahead. Softly lit and elegantly presented, this space blends style with practicality, with fitted storage designed to keep coats, shoes and daily essentials neatly tucked away.

A few gentle steps lead down to a convenient cloakroom, fitted with a WC and wash basin, perfectly placed for guests and family alike. From the hallway, the home opens out gracefully, offering direct access to the dining room, lounge and kitchen.

Flowing naturally from the entrance hall, the lounge is a beautifully balanced room filled with natural light. A large picture window frames views to the front, while patio doors to the rear, with full-height glazing on either side, draw your eye out to the garden and beyond.







Parquet flooring adds texture and warmth underfoot, complemented by an open fire that becomes the natural gathering point on cooler evenings. Fitted storage keeps the room calm and uncluttered, allowing the focus to remain on the easy connection between indoors and out.

From here, step through to the garden room, a peaceful extension of the home designed for all seasons. With underfloor heating and wraparound glazing, it is a cosy nook to read, relax or simply sit back and enjoy the changing colours of the garden throughout the year.





# The Heart of The Home

Set on the opposite side of the hallway, the kitchen is bright, contemporary and thoughtfully designed, with a layout that makes the most of both light and space. Sleek white, soft-close cabinetry runs along each wall, complemented by warm wooden worktops and long chrome handles that add a clean, modern finish.

A large window at the far end looks out across the garden, creating a peaceful backdrop for daily life, while the skylight above draws sunlight deep into the room, giving it an airy, uplifting feel.

A five-ring gas hob with a stainless-steel canopy extractor takes centre stage, with a conventional oven neatly integrated below. The continuation of wooden flooring ties the room together beautifully, while the soft blue accents and patterned wallpaper add warmth and personality.







There is room for a breakfast table, creating a welcoming spot for morning coffee or relaxed family meals. The kitchen feels both inviting and practical, with its links to the dining room and garden reinforcing its role as the home's natural centre.

The adjoining utility room brings discreet efficiency, with plumbing for a washer and dryer to keep household tasks neatly contained. A door through to the integral garage offers straightforward access for shopping or sports kit in any weather, adding a quiet layer of convenience to daily life.







## A Place To Gather

Tucked just around the corner from the kitchen, the dining room offers a lovely sense of occasion while still feeling close to the heart of the home. Timber flooring continues seamlessly from the hallway and kitchen, creating a natural connection between each space and a feeling of warmth throughout.

While the layout lends itself perfectly to open-plan living should you ever wish to make that change, the current design works wonderfully as it is. The separation allows for quieter, more intimate dining, where conversation can flow without the background hum of daily activity.

Patio doors open directly onto the garden, filling the room with light and offering an effortless link to outdoor entertaining in the warmer months. With a gentle flow back to the hallway, it's a space that balances practicality with a touch of elegance, ideal for everything from family suppers to relaxed dinner parties with friends.







## An Upstairs Retreat

Rising to the first floor, the sense of space and calm continues. The landing feels light and open, with soft tones and a peaceful flow connecting each of the rooms. Useful built-in storage helps keep the space neat and organised, adding to the home's effortless practicality.

The principal bedroom sits peacefully to the rear, enjoying views over the garden. Generously sized and elegantly styled, it offers space for a king-size bed and fitted wardrobes, creating a calm sanctuary to unwind. The adjoining en-suite features a modern shower, wash basin and WC, finished in soft neutral tones for a spa-like feel.







Bedroom two echoes the principal bedroom in both scale and natural light, enjoying a front-facing outlook that feels bright throughout the day. A full wall of gloss-finished fitted wardrobes offers generous, well-organised storage, keeping the room composed and inviting.

Currently arranged as a comfortable guest space, its balanced proportions and calm atmosphere would readily support use as a second principal bedroom, offering flexibility for changing needs or multi-generational living.







## Room For The Family

Bedroom three overlooks the rear garden, drawing in gentle natural light that moves softly through the space as the day progresses. Its restful position at the back of the home lends itself naturally to use as a child's room, a dressing room or a quiet study area, with a calm atmosphere that feels instantly welcoming.

Bedroom four is currently arranged as a study, filled with natural light from its front-facing window. Whether used as a dedicated workspace, a nursery or a single bedroom, it's a flexible and thoughtfully positioned room.

The family bathroom completes this floor, fitted with a modern suite including a bath with shower over, wash basin and WC. Crisp tiling and soft neutral décor create a sense of calm, making it the perfect place to relax and unwind at the end of the day.





# Secluded Sanctuary

Climb to the top floor and discover a private haven that feels tucked away from the rest of the home. It's the perfect retreat for guests or teenagers seeking a little extra independence, with a thoughtful layout and plenty of natural light.

The fifth bedroom is a bright and welcoming double, filled with daylight from two Velux windows that capture views in two directions. There's ample room here for a desk or dressing table, along with generous storage, making it a comfortable and flexible space to rest, work or study.







The landing has been cleverly designed with fitted storage, making excellent use of the eaves and ensuring everything has its place.

Also on this floor, the bathroom adds a touch of character, with warm bamboo flooring and a matching bath surround that bring texture and natural warmth to the space. It's a peaceful, spa-like spot to unwind, completing this perfectly self-contained upper floor.







# Outdoor Living

Step outside and discover a garden designed for both relaxation and entertaining. Patio doors from the lounge and dining room open directly onto a generous terrace, creating a wonderful sense of flow between inside and out.

The paved patio provides the perfect space for summer dining and evening drinks, framed by neatly kept borders and soft planting that add colour and privacy. Beyond, a well-tended lawn offers plenty of room for children to play or for quiet moments in the sunshine with a book and a coffee.

The garden's orientation captures the light beautifully throughout the day, while mature trees and fencing create a peaceful sense of seclusion; it's a garden that invites you to enjoy the outdoors in every season.





# Out & About

Life in Bingham blends market-town character with modern convenience. A short stroll from No. 5 Banks Crescent brings you to independent shops, cafés, bars and restaurants, creating a warm, lively atmosphere. The weekly market enlivens the square each Thursday, while the monthly farmers’ market showcases local produce and artisan goods.

For leisure, the new Bingham Arena offers a contemporary pool, gym and community facilities, and Long Acre Arts provides workshops, exhibitions and creative classes for all ages. Transport links are excellent, with regular buses and trains to Nottingham and direct rail connections further afield. It is a setting that suits both young professionals and families, offering a comfortable sense of independence with everything close at hand.

No. 5 Banks Crescent combines comfort, style and everyday ease, with generous living spaces and quieter corners to unwind. Its private cul-de-sac setting, welcoming garden and close connection to Bingham create a balanced, effortless way of life. Whether hosting, watching the seasons change or enjoying a quiet morning coffee, it is a home made for simple, lasting enjoyment.



## Floor Plan



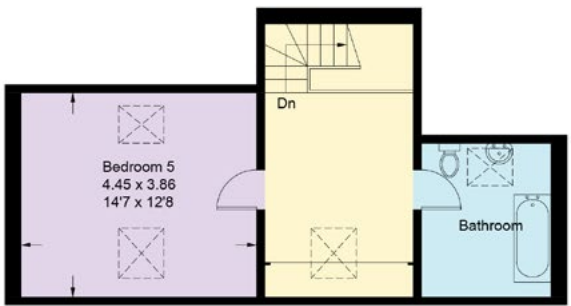
Approximate Gross Internal Area = 201.3 sq m / 2167 sq ft.

(Including Garage / Excluding Void)

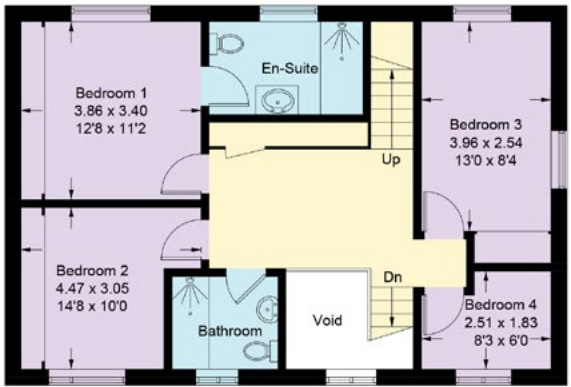
Illustration for identification purposes only.

Measurements are approximate.

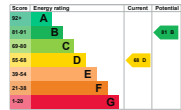
Not to scale.



Second Floor



First Floor



Smith & Co Estates use all reasonable endeavours to supply accurate property information in line with the Consumer Protection from Unfair trading Regulations 2008. These property details do not constitute any part of the offer or contract and all measurements are approximate. The matters in these particulars should be independently verified by prospective buyers. It should not be assumed that this property has all the necessary planning, building regulation or other consents. Any services, appliances and heating system(s) listed have not been checked or tested. Purchasers should make their own enquiries to the relevant authorities regarding the connection of any service. No person in the employment of Smith & Co Estates has any authority to make or give any representations or warranty whatever in relation to this property or these particulars or enter into any contract relating to this property on behalf of the vendor. Floor plan not to scale and for illustrative purposes only.

Some of the images and floorplans shown throughout the marketing and within the brochure are computer generated images and may not be accurate and therefore should not be relied upon for decision making. The accuracy of the dimensions, layout and visuals are not guaranteed and may be subject to change.



Presented By

Smith & Co.  
e s t a t e s

Unwin Suite, Innisdoon, 1 Crow Hill Drive, Mansfield NG19 7AE  
To view Five Banks Crescent, call our team on 01623 392352 or email [info@smithandcoestates.co.uk](mailto:info@smithandcoestates.co.uk)



scan to view video



[archduke.fanfare.surprises](https://archduke.fanfare.surprises)