





A WARM COUNTRY WELCOME

In the heart of the picturesque village of Thorpe Salvin, discover The Farmhouse; a charming period home filled with character, warmth and thoughtful details at every turn.



Timber gates open to a paved forecourt, framed by a cottage-style garden of lawns, mature shrubs and an arbour entrance, setting the scene before you even step inside. To the side, an oversized detached garage with automated door, light and power offers secure parking, hobby potential and a useful mezzanine storage level.

STEP INSIDE

The entrance hall sets the tone — light, welcoming and with the staircase rising ahead, it gently leads you into the living spaces.

The sitting room runs the full depth of the house, with windows front and back. A useful built-in cupboard provides excellent storage, keeping the room neat and uncluttered.



This generous space also has provision for a feature fireplace, ready to be opened and transformed into a striking focal point.

From here, doors connect directly to both the kitchen and the Whisky Room, giving the ground floor a natural and easy flow that works just as well for everyday family life as it does for entertaining.





A TOUCH OF INDULGENCE

One of the most distinctive spaces is the Whisky Room; a bespoke and recently renovated retreat. Triple aspect windows bring light through the day, but as evening falls, the room comes into its own.

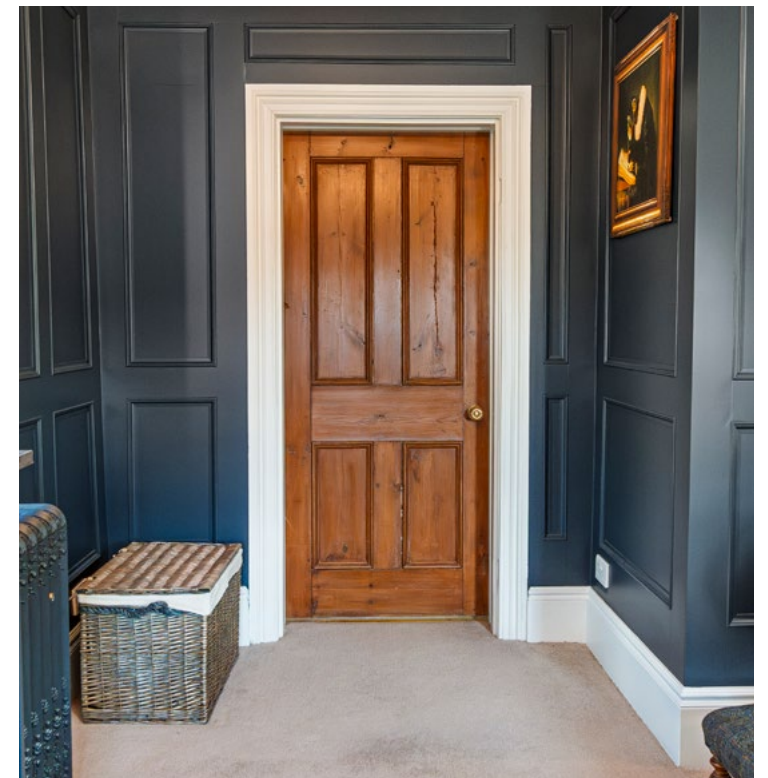
The polished limestone fireplace frames a glowing log burner, while soft uplighting plays against the rich wooden panelling, creating a mellow amber glow that fills the space with warmth and intimacy.



THE WHISKY ROOM

It is a room designed to be savoured slowly, where shelves can be dressed with your favourite bottles, glassware and treasured collections.

By day it feels like a distinguished study or snug, and by night it transforms into a cocoon of atmosphere, perfect for quiet reflection, indulgent nightcaps or evenings of conversation with friends. The Whisky Room is not just another reception room — it is an experience, an escape, and a highlight of this very special home.





THE HEART OF THE HOME

The farmhouse kitchen is a beautifully proportioned L-shaped space with shaker cabinetry, granite worktops and a range-style cooker. Triple windows pour natural light across the room, while integrated appliances and tiled flooring keep it practical and stylish. With space for a dining table, this is very much the family hub; a place for Sunday brunch, busy weekday suppers and long conversations around the table.





SPACE TO ENTERTAIN

Beyond, the utility room continues the same finish with fitted units, laundry space and the oil-fired boiler neatly concealed. A WC off here adds convenience for everyday family life. Flow through to the light-filled garden room; airy and bright, with a high ceiling and a stone inglenook-style fireplace that houses another log-burning stove.

Looking out to the gardens, it is a year-round living space, perfect for family gatherings or flinging open the doors to let the summer breeze in.





REST & RETREAT

Upstairs, three characterful bedrooms await.

The principal suite offers calm and comfort. A dedicated dressing room with fitted wardrobes provides plenty of storage, while the bedroom itself is framed by cottage windows and filled with light.





REFRESH & REVIVE

The en-suite is a spa-style retreat — a freestanding bath beneath pitched ceilings and exposed beams, and soft natural light filtering through shutters. This is a space to switch off, unwind and indulge.





BEDROOM BLISS

Bedroom 2 is a spacious double, full of period character. With its original cast iron fireplace and garden outlook, it is a restful retreat that blends charm with practicality.

Bedroom 3 is currently used as a study, but its proportions and outlook make it highly versatile. Whether as a nursery, an additional dressing room, or a cosy guest space, it can be adapted to suit the changing needs of family life.



Serving these bedrooms is a beautifully appointed family shower room. Finished in a contemporary style, it features a large walk-in rainfall shower, modern vanity and a calming palette that feels fresh and inviting. Practical and stylish, it ensures comfort for family and guests alike.



COTTAGE GARDENS

Outside, the gardens are private and beautifully planted. Lawns, trees and mature borders frame the cottage setting, while discreet screening hides the oil tank. With outside power, water and lighting, the space is as practical as it is peaceful.



A VILLAGE TO LOVE

Thorpe Salvin is a quintessential English village, celebrated for its stone cottages, historic parish church and welcoming community. At its heart is The Parish Oven, a popular pub known for good food and friendly gatherings.

Nature lovers will delight in the Chesterfield Canal, with miles of scenic towpaths for walking or cycling, while the annual Thorpe in Bloom Festival brings colour and community spirit each summer. The village is also home to internationally recognised gardens that attract visitors from far and wide.

Though idyllic and peaceful, Thorpe Salvin is perfectly placed for access to Worksop, Rotherham and Sheffield, with excellent connections for commuting.

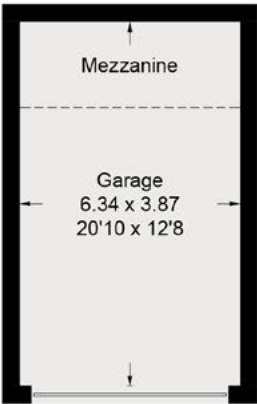


A HOME TO RETURN TO

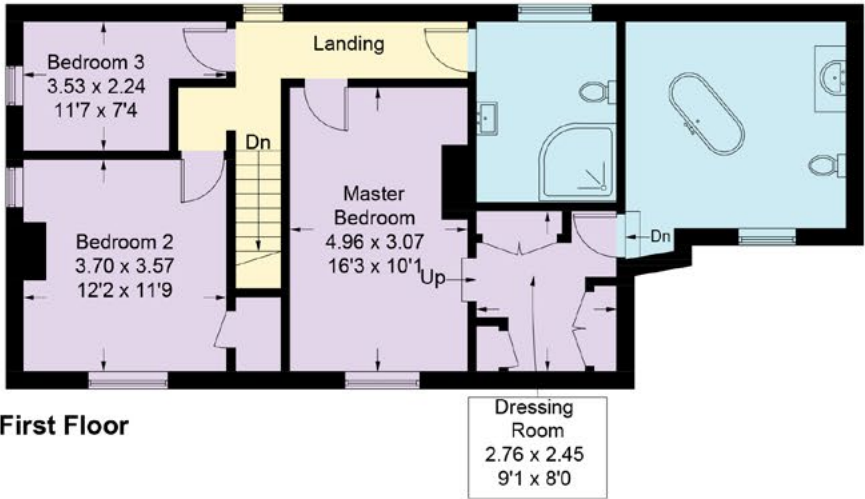
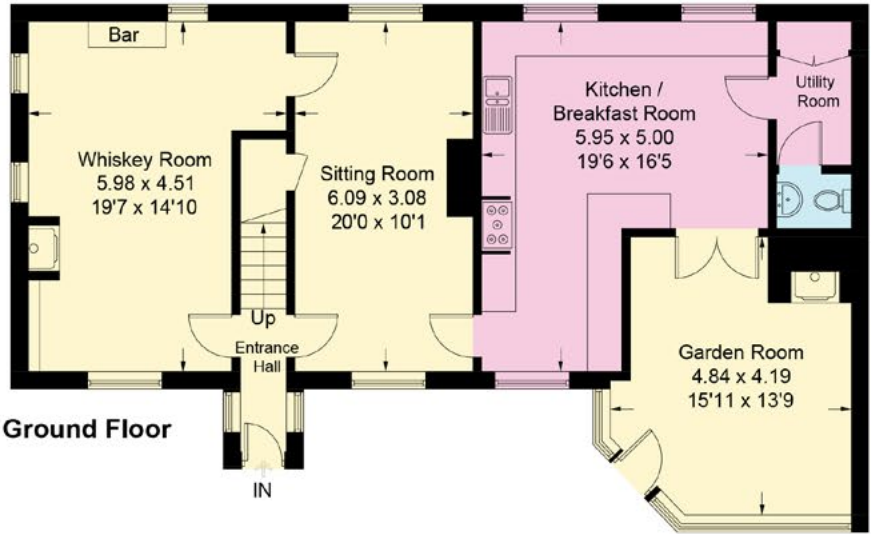
With its characterful rooms, indulgent touches and gardens that invite you to linger, The Farmhouse is more than just a house — it is a home with a heart. Here, in this sought-after village setting, life can unfold at a gentler pace. And when the day is done, you will always find a warm welcome waiting for you at The Farmhouse.

FLOOR PLAN

Approximate Gross Internal Area = 176.5 sq m / 1900 sq ft.
Garage = 24.4 sq m / 263 sq ft. Total = 200.9 sq m / 2163 sq ft.



(Not Shown In Actual Location / Orientation)



Smith & Co Estates use all reasonable endeavours to supply accurate property information in line with the Consumer Protection from Unfair trading Regulations 2008. These property details do not constitute any part of the offer or contract and all measurements are approximate. The matters in these particulars should be independently verified by prospective buyers. It should not be assumed that this property has all the necessary planning, building regulation or other consents. Any services, appliances and heating system(s) listed have not been checked or tested. Purchasers should make their own enquiries to the relevant authorities regarding the connection of any service. No person in the employment of Smith & Co Estates has any authority to make or give any representations or warranty whatever in relation to this property or these particulars or enter into any contract relating to this property on behalf of the vendor. Floor plan not to scale and for illustrative purposes only.

Some of the images and floorplans shown throughout the marketing and within the brochure are computer generated images and may not be accurate and therefore should not be relied upon for decision making. The accuracy of the dimensions, layout and visuals are not guaranteed and may be subject to change.



Presented By

Smith & Co.
e s t a t e s

Unwin Suite, Innisdoon, 1 Crow Hill Drive, Mansfield NG19 7AE
To view The Farmhouse, call our team on 01623 392352 or email info@smithandcoestates.co.uk



scan to view video



community.spoke.owned