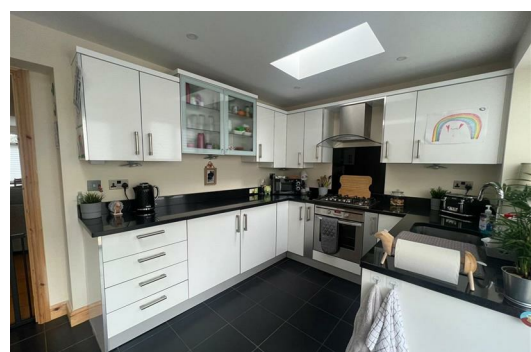




25 Hillsway Crescent, Mansfield  
Nottinghamshire NG18 5DR  
£995

Welcome to Hillsway Crescent. A spacious and well maintained family home ready for your own homely touches.



### Hillsway Crescent

A 3-bed semi detached property, well maintained with off street park and enclosed rear garden available from the early August 2024.

Enter through the front door into the entrance hall with space to remove shoes and coats before turning right into the open plan dining/living space. With oak effect flooring throughout the lounge entrance hall. There is a bay window at the front of the property filling the room with light.

Moving through into the modern kitchen with French doors out onto the decking in the rear garden. High gloss white cabinets with black worktops create a light and bright workspace. There is room for your own free standing fridge-freezer. Black tiling to the floor.

The good sized garden is fully enclosed with a decked area large enough for a table and chairs. There is also a shed at the top of the garden.

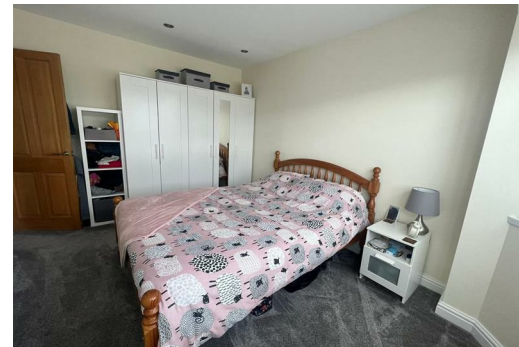
Heading upstairs you will find two decent sized double bedrooms and a third bedroom currently used as a home office. Each bedroom, the landing and the stairs are carpeted in grey and neutrally decorated.

The family shower room houses a large shower enclosure, basin and toilet.

This property does not allow smoking.

### Viewing Arrangements

For accompanied viewings on this property, please contact us on 01623 392 352 or email us on [info@smithandcoestates.co.uk](mailto:info@smithandcoestates.co.uk)



Smith & Co Estates Limited  
Unwin Suite, 1 Crow Hill Drive, Innisdoon,  
Mansfield, Nottinghamshire NG19 7AE

t: 01623 392 352  
e: [info@smithandcoestates.co.uk](mailto:info@smithandcoestates.co.uk)  
w: [www.smithandcoestates.co.uk](http://www.smithandcoestates.co.uk)