



WILDFLOWER RISE

THE PARK, MANSFIELD

THE SNOWDROP



Snowdrop – an iconic sight heralding that winter is at last coming to an end. This pale blossom has long been associated with friendship, purity and hope.

Welcome to the comforting warmth of The Snowdrop, a three-storey, five bedroomed home.

Step through the porch and into the entrance hall, and from there continue left through the oak veneer door and into the inviting living room.

Light flows in naturally through the broad bay window to the front. Such a splendid room in which to welcome guests, enjoy family time or simply relax on the sofa with a good book.

To the right from the entrance hall, discover the formal dining room, perfect for entertaining at Christmas or for memorable Sunday dinners with your nearest and dearest.

Accessible through double doors from this dining room, or via the entrance hall, is the open-plan, breakfasting kitchen, fitted with an array of top-quality AEG appliances including a five-ring gas hob with overhead extractor, double oven, microwave, dishwasher, fridge-freezer and wine-cooler.

Relax after dinner in the snug area, whilst to the left, the utility room, fitted with an additional sink and white goods, also leads to the WC, garage and from there to the back garden beyond.

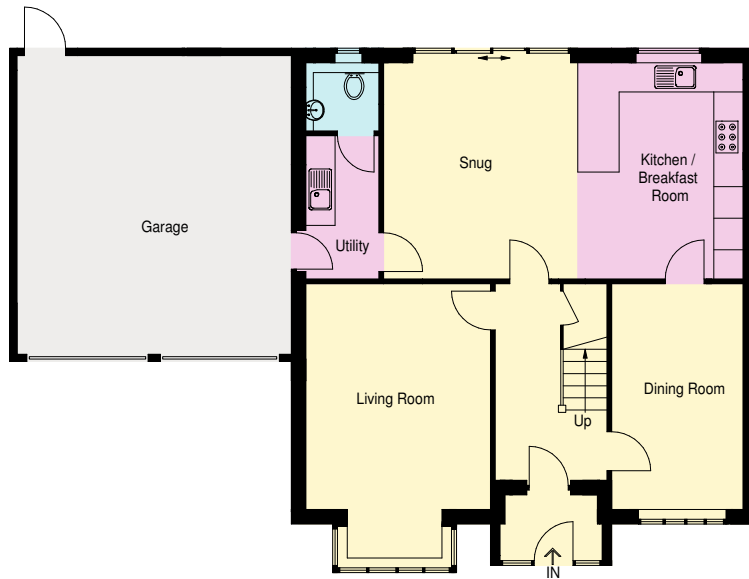
Returning to the entrance hall, discover storage beneath the staircase, which leads up to the first of two floors.

On the first floor, discover bedroom five and also the bay-fronted bliss of bedroom three to the front. Delightfully designed, light-filled dream dens.

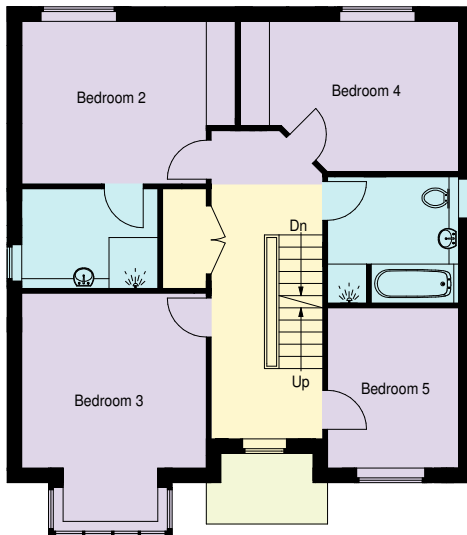
To the rear, bedroom two benefits from its very own private en-suite bathroom, whilst bedroom four is conveniently close to the centrally located family bathroom with separate bath and shower.

Ascend to the uppermost level, devoted to the master suite sanctuary. Enjoying its own private dressing room and en-suite this is the ultimate relaxing refuge.

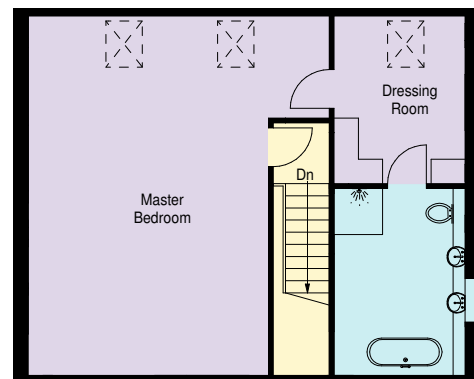
FLOOR PLAN



GROUND FLOOR



FIRST FLOOR



SECOND FLOOR



WILDFLOWER RISE

THE PARK, MANSFIELD

FLAWLESS FINISH, DISTINCTIVE DESIGN



Much like the flower, each home in Wildflower Rise unfurls to reveal a new layer of beauty, from its outer layers to the intricate, flawlessly constructed detail within.

Constructed to the highest quality, these homes have been designed to cater for contemporary living. Outside, rustic red brick appeal is embellished with classic tones in the paintwork of the double garages and the intricate design of the exposed timber in the portico entrances.

Ambient sensor wall lighting provides security, illumination and comfort, whilst block paved driveways offers ample room for parking for the whole family.



Inside, bi-fold doors open to level threshold external terraces with well-known, premier ranges including Porcelanosa and Stelrad Radiators Group embellishing the interiors.

Gas central heating and hot water systems cater to all homes, with thermostatically controlled wall panel radiators warming each room. Internal smoke detectors are present in all homes.

Meadow (noun) an open habitat attracting a multitude of wildlife, flora and fauna that could not thrive in other habitats. They provide areas for courtship displays, nesting, food gathering and sheltering.



L I V E

Stay connected and enjoy leisure time in all the bedrooms and living areas courtesy of BT and Virgin Media sockets.

From the robust oak veneer doors and smooth oak handrail of the stairs, to the sheen of the brushed steel electrical switches, sockets and recessed spotlighting, the premier finish is palpable throughout these exclusive homes.

All of this luxury is covered under a ten-year insurance-backed warranty with Premier.



E A T

Each home at Wildflower Rise has open-plan family living at its heart; and the heart of the home is inevitably to be found in the kitchen, where the family flock like butterflies to nectar.

Discover top quality integrated AEG appliances, including a five-ring gas hob with overhead extractor, double oven, microwave, dishwasher, fridge-freezer and the added luxury of a wine-cooler. It's the addition of these quality utilities that make Wildflower Rise stand out from the crowd .

Porcelanosa tiles coat the walls and floors of each bespoke spacious, luxury kitchen, which also features a stylish Blanco sink, an island style breakfast bar and granite worktops which gleam beneath the LED under-unit lighting.



R E L A X

Utterly indulgent, each home at Wildflower Rise takes bathing refreshment to the next level.

Featuring a selection of designer WCs, bathrooms and en-suites, attention to detail.

From large slab-style Porcelanosa tiling to walls and floors to sumptuous Stelrad heated towel rails and humidity extractor fans; bathroom time has never been so divine.





WILDFLOWER RISE

THE PARK, MANSFIELD

BEYOND THE MEADOW



Wherever you choose to roam, it's easy to find your way home to Wildflower Rise. The motorway network is in easy reach with junctions 27 to 29 of the M1 accessible in 30 minutes.

Travel to nearby Nottingham on the A60, or take the A617 to Newark. Public transport is also within easy reach, with Mansfield's attractive Grade II listed railway station only a 15-20-minute walk from Wildflower Rise; handy for those commuting to Nottingham.

Bus routes are available too, only a five-minute walk from Wildflower Rise on the Woodhouse Road. During peak commuting hours, these services run every 10 minutes into Mansfield, Meden Vale, Shirebrook and beyond.

Wildflower Rise skirts the edge of Green Flag award-winning Carr Bank Park in Mansfield, a park that spans five hectares and incorporates open grassland, landscaped gardens, mature trees and woodland and even an 18th century manor house.

Now a hotel and restaurant, it's an ideal location for dog-walkers and families, with its multi-play area, bowling green and tennis courts.

In the heart of Robin Hood Country, Wildflower Rise is perfectly situated in peaceful rural surroundings with nature's playground on its doorstep and all the vibrancy of city life so accessible and in easy reach.



Rediscover the past with a trip to Rufford Abbey Country Park – home to Rufford Abbey, dating back to the 12th century. Brimming with history, there is much to see and do with year-round events and activities to be enjoyed by all ages and abilities, from themed trails, to archery competitions and Christmas markets.

Appetite for adventure? Sherwood Pines offers a schedule of exhilarating events throughout the seasons. So whether it be walking, cycling, bushcraft, Segway, Go Ape, Nordic Walking or orienteering that appeals, this is the place to be if you want to be active outdoors.

Berry Hill Park, Clumber Park, Vicars Water and the well-famed Sherwood Forest Country Park are all on your doorstep when the call of the outdoors sounds.



"Wildflowers don't grow haphazardly as we are led to believe. They grow in fantastic patterns which are different to each of us you see." - Anthony T. Hincks



WILDFLOWER RISE

THE PARK, MANSFIELD

A PLACE IN WHICH TO THRIVE

Melding meticulous design with effortless elegance and the finest flair in each home's unique finish, the bespoke and exclusive residential development of Wildflower Rise more than earns its evocative name.

Nestled on the edge of over five hectares of open grassland and meandering woodland, Wildflower Rise delivers an exciting array of family living in the form of twenty three luxurious four and five bedroomed detached homes.

Each with its own spacious double garage and block-paved drive replete with two parking spaces and great, green gardens, each home at Wildflower Rise has been specifically designed with convenience and comfort in mind.

Wildflowers evoke the untamed beauty of the drifting seed, free to flower where it chooses. This freedom to roam approach is reflected in the fresh-feeling open-plan design of the ground floor in every home at Wildflower Rise.



Whether it's free-flowing family life you're after or the ultimate entertaining space, Wildflower Rise has been developed by those who understand what it means to be unique and individual amidst the crowd.

