

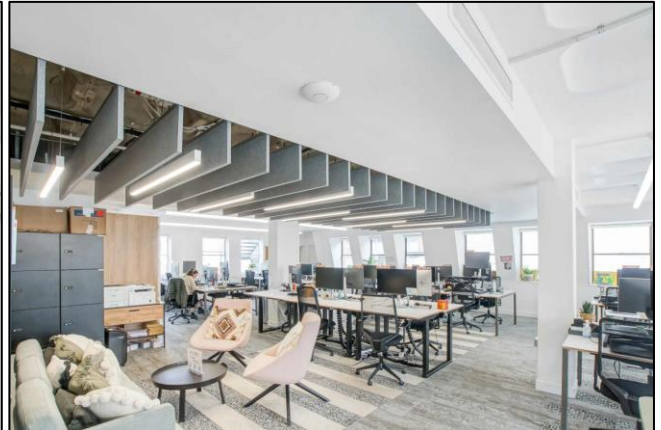
Commercial Office Space

2,771 sq. ft. / 257.43 sq. m. – 30+ desks

Fitted office moments from Farringdon Station

MANAGED OFFICE

99 Charterhouse Street, Farringdon, London EC1M 6HR



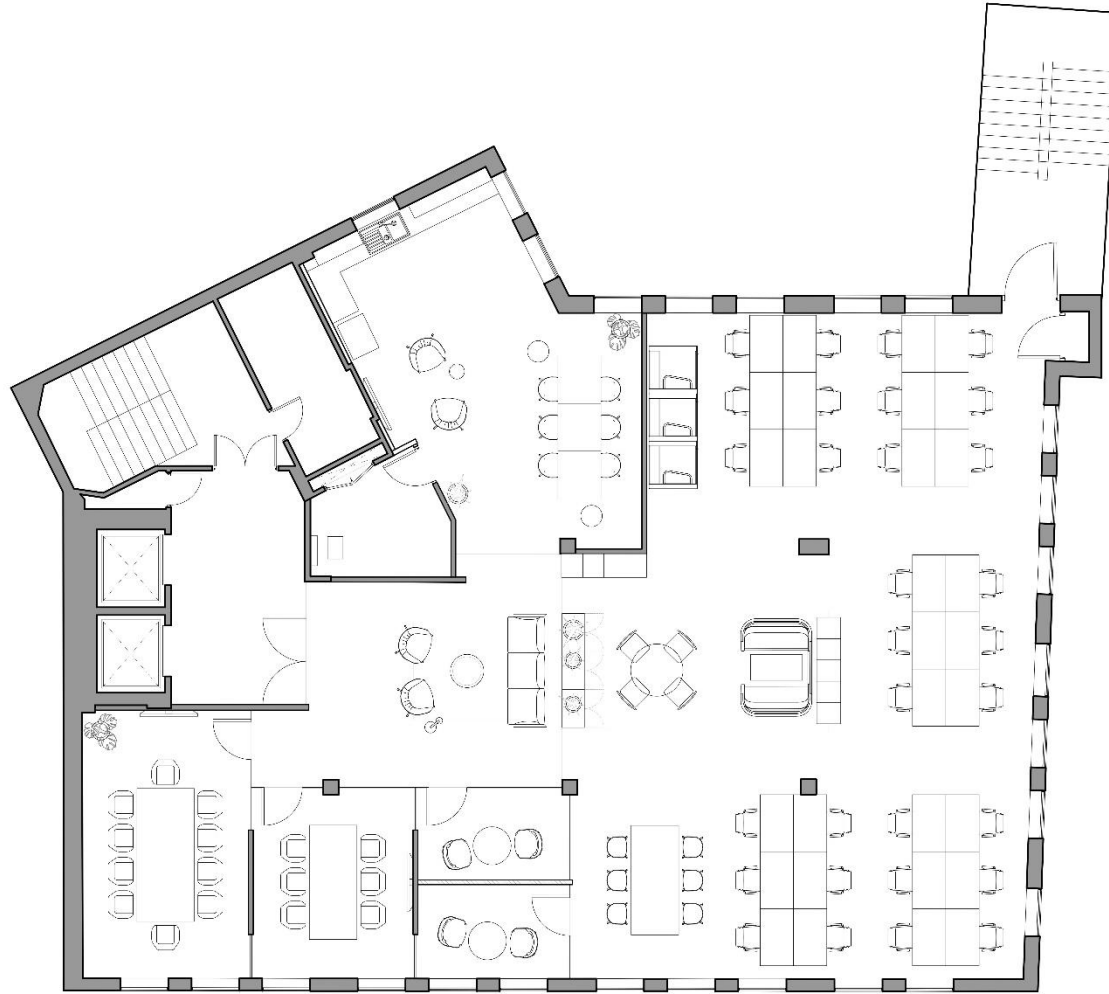
LOCATION

The building is prominently located on Charterhouse Street, close to the junction with St John Street and overlooking Smithfield Market. Situated in the centre of Farringdon, there is a great selection of cafes and restaurants within the immediate vicinity. Farringdon Station is just a couple of minutes walking distance.

TRANSPORT

Farringdon Station (Circle, Elizabeth, Hammersmith & City and Metropolitan lines and National Rai)
Barbican Station (Circle, Hammersmith & City and Metropolitan lines)
Chancery Lane (Central line)
St. Paul's (Central line)

FLOOR PLAN





DESCRIPTION

The fourth floor offers panoramic views over Smithfield Market and towards The City.

The space benefits from excellent natural daylight, fibre internet, meeting rooms and a newly installed kitchenette.

AMENITIES

- Moments from Farringdon Station
- 30+ workstations
- Air conditioning
- Power & data cabling
- Open plan floor
- 4 x meeting rooms
- Kitchenette
- Commissionaire

Floor	Size Sq. Ft.	No. Of Desks	Total Managed Cost (includes rent, service charge, business rates & cleaning)		
			Per Sq. Ft.	Per Annum	Per Calendar Month
Fourth	2,771	30+	£103.93	£288,000	£24,000

LEASE

A new flexible lease is available.

PLEASE CONTACT

ANTON PAGE 020 7336 1313

Stephen Page
spage@antonpage.com

Harrison Turner
hturner@antonpage.com