



# 25 CAMPERDOWN STREET

LONDON E1

**7,230 SQ FT | 671.7 SQ M**

# 25 Camperdown Street offers 7,230 sq ft of fitted workspace



## SPECIFICATION

- Comprehensively refurbished throughout
- Fitted and part furnished space
- Commissionaire/24hr access
- Excellent natural light
- 2.7m floor to ceiling height
- Raised floors & Metal tiled suspended ceiling
- VAV air conditioning
- Bicycle parking
- Basement Storage
- Flexible lease to Jan 2025



## DINE

1. Pizza Union
2. LMNH Kitchen
3. Natural Kitchen
4. Sushi Samba
5. Satyrio

## WELLNESS

11. 1Rebel
12. Anytime Fitness
13. F45
14. PureGym
15. Crossfit

## DRINK

6. Slug & Lettuce
7. Lemon Street Tavern
8. The Alchemist
9. The Culpepper
10. Costa Coffee

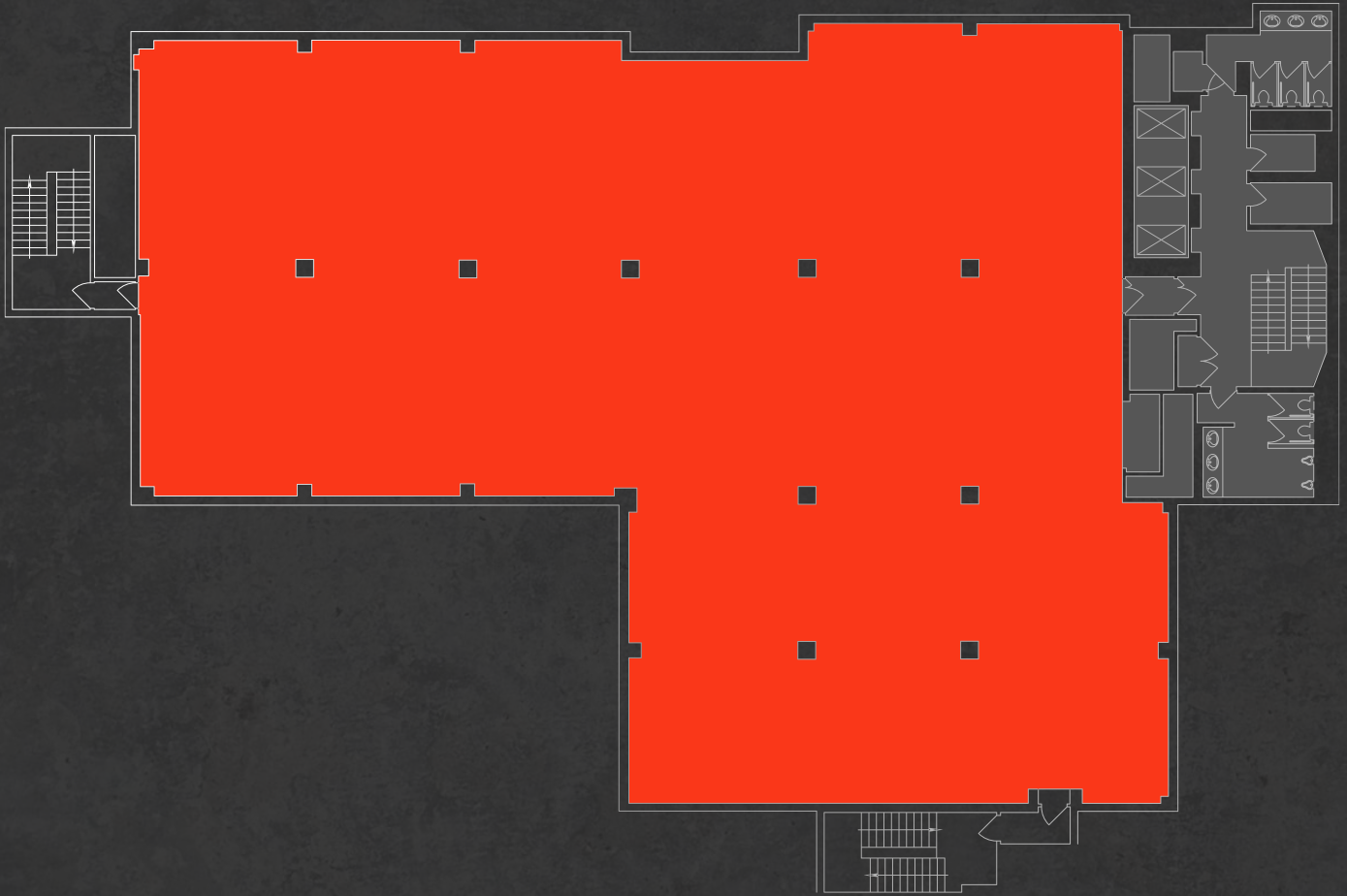
## LEISURE

16. Curzon Aldgate
17. Fotografiska
18. Wilton's Music Hall
19. The Whitechapel Art Gallery
20. Spitafields Market



# 3rd Floor

7,230 Sq Ft / 671.7 Sq M



Office Space



Core

Floor plans not to scale. For identification purposes only.



## FINN LEDWIDGE

07703 018 243  
020 7336 1313  
fledwidge@antonpage.com

## ANDREW INGRAM

07901 000 763  
020 7336 1313  
aingram@antonpage.com

## Hartnell TaylorCook

## CHRISTOPHER WRIGHT

07884 865 261  
020 7491 7323  
christopher.wright@htc.uk.com