

66 West End · Redruth · Cornwall · TR15 2SQ

t: 01209 210333

e: bill@billbannister.co.uk · www.billbannister.co.uk

**BILL
BANNISTER**

Sales & Lettings



Blake House Penberthy Road

Portreath, Redruth, TR16 4LP

£379,950



Blake House Penberthy Road

Portreath, Redruth, TR16 4LP

£379,950



Dating back to the 1850's, we are very pleased to bring to market this three bedroom house that retains some external Victorian architectural elements. Situated just a few minutes walk from the beach, the character property offers an ideal blend of comfortable and spacious family living in a coastal village setting. Internally, on entry, you will find a study area which gives open access to the hallway. There is a large lounge with traditional flooring to the front of the property whilst the kitchen gives access to the bright dining area, courtesy of a skylight, at the rear. There is a downstairs double bedroom that is complemented by the family bathroom. To the first floor, there are two bedrooms, both offering en-suite facilities albeit one is partially incomplete. Externally, there is a low maintenance front garden with a gravelled driveway and grassed borders with parking for one vehicle. The rear garden is accessed via either patio doors or a stable door and these lead out onto a decked patio terrace with a lawned area and borders of mature shrubs and bushes. In terms of location, the local beach can be reached on foot in less than ten minutes, the famous coastal path is also very close by whilst there are many other local beaches within easy reach. Portreath itself offers two public houses, cafes and local shops plus a fish and chip shop. Further afield, Camborne and Redruth town centres are equidistant and can be reached in around twelve minutes by car. Tehidy Country Park is within a few minutes by car but can also be reached on foot for those keen to explore the local area in closer detail. Tehidy Park Golf Club is around six minutes away by car.

Upvc front door with obscure double glazed panels leading to:

ENTRANCE HALLWAY/STUDY AREA **7'8" x 8'11" (2.35m x 2.72m)**

Upvc double glazed window overlooking the front garden and aspect with shutters. Wall mounted electric heater. Open access to:

HALLWAY

Switchback staircase to the first floor with an understairs storage cupboard. Smoke alarm.

LOUNGE

11'1" x 9'10", 144'4" (3.38m x 3.44m)

Wall mounted electric heater. Non-functioning fireplace set on a marble hearth with a wood surround. Upvc double glazed bay window overlooking the front aspect with shutters. Low level services cupboard.

KITCHEN

7'11" x 10'3" (2.42m x 3.13m)

Fitted with a wide range of eye level and base level storage cupboards and drawers. A mixture of rolled edge and bevelled edge granite work surfaces with tiled splash backs. Space for a gas cooker (bottled gas) plus space and plumbing for a washing machine. Double glazed upvc window overlooking the side aspect and space for further white goods. Serving hatch and door with step down to:

DINING AREA

9'5" x 8'3" (2.88m x 2.52m)

Dual aspect room with a upvc double glazed window to the side and upvc double glazed casement patio doors leading to the rear garden with double glazed casement side panels plus a skylight. Upvc stable door with a double glazed panel leading out to the patio area with composite decking.

BEDROOM 3

13'1" x 8'9" (4.00m x 2.68m)

Opening for a former fireplace converted into a clothes hanging space. Upvc double glazed sash window overlooking the rear patio and garden. Wall mounted electric radiator and a wood panelled ceiling. Extractor fan.

FAMILY BATHROOM

7'8" x 4'6" (2.35m x 1.38m)

Predominantly tiled with a low level wc and a wash hand basin mounted on a tiled shelf with a mirror and light above. Bath with a shower/mixer tap and concertina glass shower screen. Wood panelled ceiling and an extractor.

FIRST FLOOR

Storage cupboard halfway up the stairs into the roof space.

Tel: 01209 210333

LANDING

BEDROOM 1

11'4" x 10'1" (3.47m x 3.08m)

Upvc double glazed window overlooking the front aspect with shutters. Loft access hatch and a wall mounted electric radiator. Extractor fan. Door with two decorative frosted glazed panels to:

EN-SUITE SHOWER ROOM

7'8" x 2'6" (2.34m x 0.77m)

Predominantly tiled to the walls and floor. Low level wc with a table mounted mini wash hand basin with a mirror above. Concertina sliding glass door to the shower (there is no fitted shower).

BEDROOM 2

11'9" x 11'10" (3.60m x 3.61m)

Wall mounted electric radiator and a upvc double glazed window overlooking the rear garden and aspect with shutters. Door with two decorative frosted glazed panels to:

EN-SUITE SHOWER ROOM

4'7" x 4'0" (1.40m x 1.24m)

Predominantly tiled to the walls and floor. Low level wc and a table mounted mini wash hand basin with a mirror above. Thermostatic shower in a double cubicle with aqua board splash back and sliding glass doors. Extractor fan.

OUTSIDE

To the front gates open to a gravel driveway providing parking for one vehicle. There are grassed borders to each side and further borders of mature bushes, shrubs and plants leading to a block paved patio and to the front door. External light. To the rear, patio doors open out to a decking area/terrace and there is a laid to lawn area with a garden shed and borders of mature shrubs and bushes. Outside lights and an outside socket.

DIRECTIONS

From our office in Redruth take the main road to Portreath passing the primary school on the left hand side. The property will be found on the right hand side just after the turning to Greenfield Terrace.

AGENTS NOTE

TENURE: Freehold.

COUNCIL TAX BAND: B.

SERVICES

Mains drainage, mains water, mains electricity and electric heating.

Broadband highest available download speeds - Standard 10 Mbps, Superfast 70 Mbps (sourced from Ofcom).

Mobile signal -

EE - Good indoor & outdoor, Three - Good outdoor & variable indoor, O2 - Good outdoor & indoor, Vodafone - Good outdoor & indoor (sourced from Ofcom).



Road Map



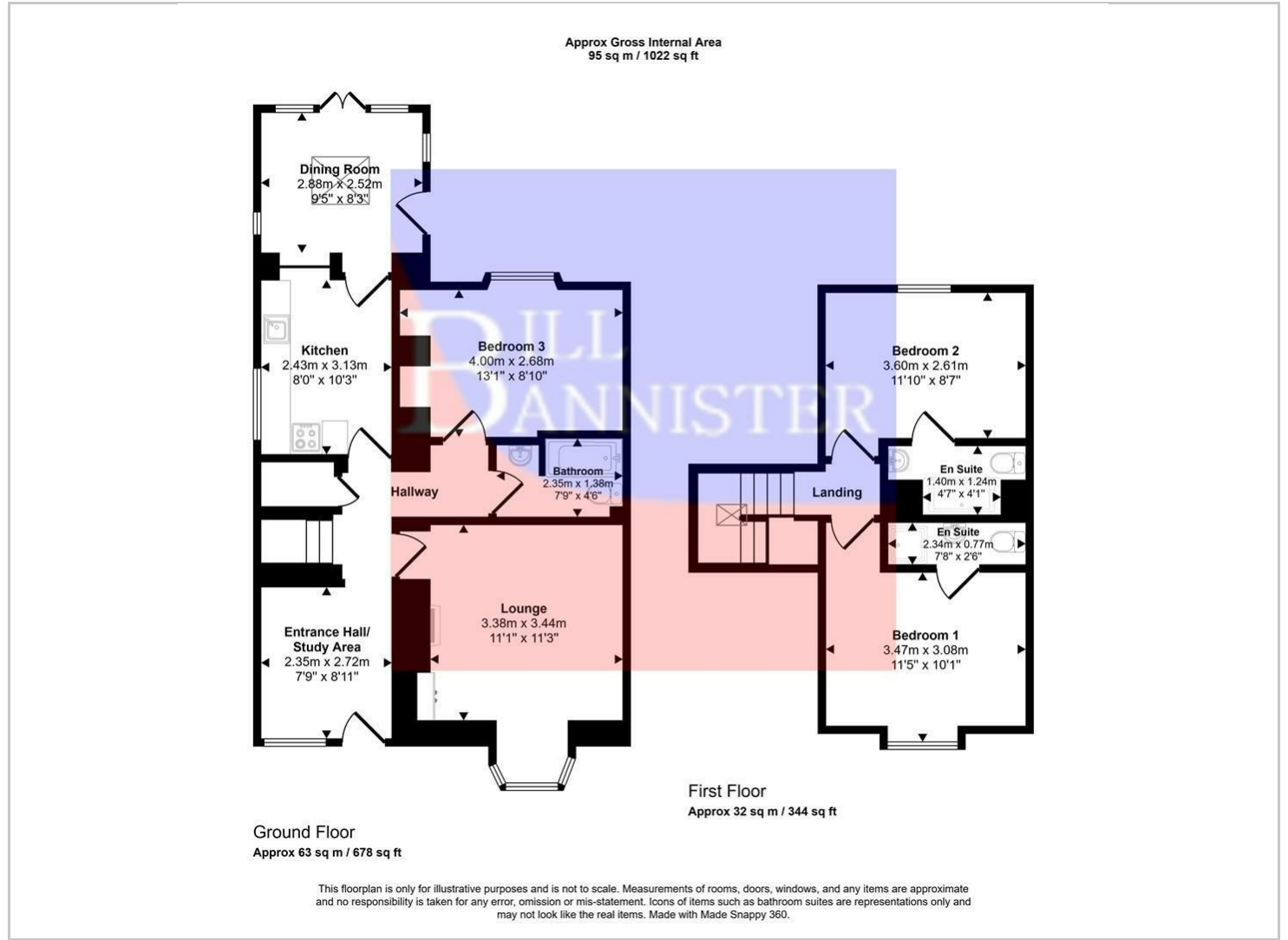
Hybrid Map



Terrain Map



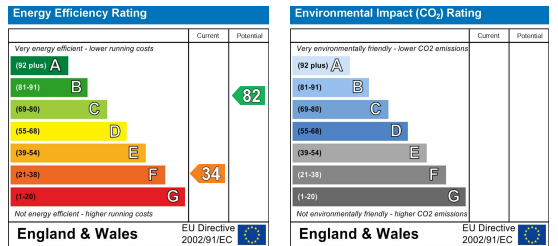
Floor Plan



Viewing

Please contact our Redruth Office on 01209 210333 if you wish to arrange a viewing appointment for this property or require further information.

Energy Efficiency Graph



These particulars, whilst believed to be accurate are set out as a general outline only for guidance and do not constitute any part of an offer or contract. Intending purchasers should not rely on them as statements of representation of fact, but must satisfy themselves by inspection or otherwise as to their accuracy. No person in this firm's employment has the authority to make or give any representation or warranty in respect of the property.