

FLAT

**Bickley Street
Tooting Broadway
SW17 9NE**

£415 Per Week

Bickley Street SW17

Period One Bedroom Flat

Modern Open Plan Kitchen with Dining Area

Modern Bathroom

Private Roof Terrace

Close To Local Amenities

Minutes Away From Tooting Broadway Tube Station

Perfect For Professional Couple Or Single Professional

Available Furnished

Call Now on 0207 101 1636 To Arrange A Viewing



absolute living

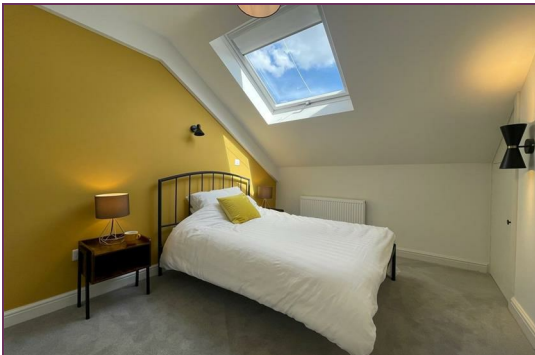
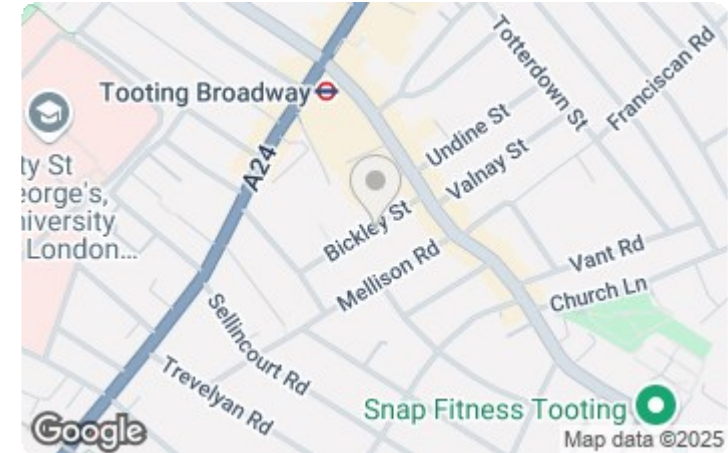
**AVAILABLE
10TH MAY 2025**



1 BED FLAT LOCATED IN TOOTING BROADWAY

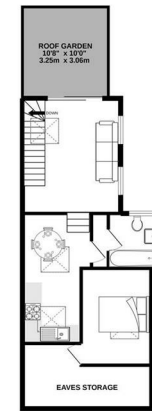
Call us on
020 3002 9002
hello@absoluteliving.co.uk

Absolute Living are delighted to bring to the market this spacious and bright one bedroom flat on the upper floors of this period property on a prime road close to Tooting Broadway with a private roof terrace. Available 10th May 2025.



Full Description

This property has been finished to a very high standard throughout. It comprises, large bedroom, modern bathroom, a bright fully integrated modern kitchen, open plan reception opening on to a private suntrap terrace. It would make a lovely home for a couple or single professional. Located on a quiet residential street yet still in the very heart of the thriving Tooting scene, this period flat is only a 8 minute walk from Tooting Broadway Tube Station (Northern Line) and the same from the large supermarket. Available on the market on a furnished basis. Early viewings are highly recommended. Call today to arrange a viewing.



| Energy Efficiency Rating | | Environmental Impact (CO ₂) Rating | |
|--------------------------|-----------|--|-----------|
| Current | Potential | Current | Potential |
| 79 | 79 | | |

Very energy efficient - lower running costs
Very environmentally friendly - lower CO₂ emissions
Not energy efficient - higher running costs
Not environmentally friendly - higher CO₂ emissions
EU Directive 2002/91/EC

Agents Note: Whilst every care has been taken to prepare these particulars, they are for guidance purposes only. All measurements are approximate and are for general guidance purposes only and whilst every care has been taken to ensure their accuracy, they should not be relied upon and potential buyers are advised to recheck the measurements.

