




Bower Hill, Oxspring, Sheffield, S36 8WF

£1,500PCM (Deposit: £1,730)

 3  2  2



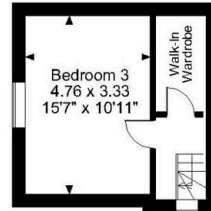
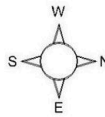
Tax Band: E Furnished:
Not specified

- GEORGIAN CHARACTER HOME
- SPACIOUS ACCOMMODATION
- WEST FACING LANDSCAPED GARDEN WITH SUMMER HOUSE
- OPEN COUNTRYSIDE & TRANS PENNINE TRAIL
- HIGHLY REGARDED SCHOOLS
- 3 BEDROOMS
- RETAINED PERIOD FEATURES
- PRIVATE TUCKED AWAY POSITION
- LOCAL SERVICES & AMENITIES
- M1 ACCESS & TRAIN STATION

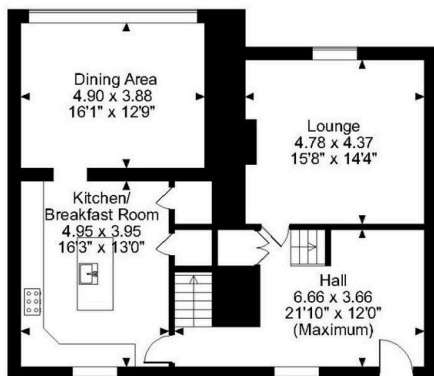


	Current	Potential
Very energy efficient – lower running costs		
(92 plus) A		92
(81-91) B		
(69-80) C		
(55-68) D	62	
(39-54) E		
(21-38) F		
(1-20) G		
Not energy efficient – higher running costs		

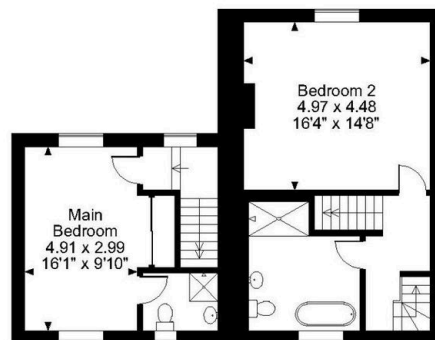
Oxspring House Cottage Bower Hill, Oxspring, Sheffield
 Approximate Gross Internal Area
 Main House = 2272 Sq Ft/211 Sq M
 Garden Room = 181 Sq Ft/17 Sq M
 Total = 2453 Sq Ft/228 Sq M



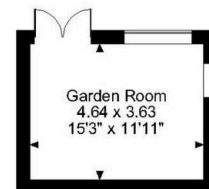
Attic



Ground Floor



First Floor



FOR ILLUSTRATIVE PURPOSES ONLY - NOT TO SCALE

The position & size of doors, windows, appliances and other features are approximate only.
 © ehouse. Unauthorised reproduction prohibited. Drawing ref. dij/8573464/GRN



A delightful 19th century cottage, sympathetically converted and restored retaining original period features, offering exceptional, spacious accommodation, approached by a tree lined lane and enjoying a private tucked away position.



Lancasters Property Services
 Property Professionals For Over 230 Years
 Independent Estate Agents, Surveyors & Property Management
 Email: mail@lancasters-property.co.uk
 In association with Lancasters Property Management Ltd.

Lancaster House, 20 Market St.
 Penistone S36 6BZ
 Tel: (01226) 763307