



  
**lomond**  
make yourself a home

7 St Kilda Court, Irvine KA11 1HU

## Accommodation

Located in the popular Broomlands area of Irvine just a short walk from Elderbank Primary School, 7 St Kilda Court is an mid terrace villa offering family sized accommodation over two levels. The property comprises three bedrooms, lounge/ diner, kitchen, bathroom and downstairs WC. Externally the property comes with on street parking to the front and private gardens to the rear.

In summary the property layout extends to an entrance hallway with stairs to the upper level. The lounge / diner stretches the entire width of the property with French doors to the garden. The kitchen is modern, accessed off the entrance hallway; spacious in size with floor and wall mounted units, with electric hob, oven and hood. There is a large storage cupboard off the entrance hallway. Completing the ground floor is a WC.

The upper level houses three bedrooms, and a family bathroom. All bedrooms are double in size. The bathroom is a recent upgrade finished to modern wet wall panels, with large walk in shower, WC and WHB.

A large storage cupboard is located off the upper landing.

Externally the property has on street parking to the front, with private gardens to the rear laid to a combination of patio slabs, and decorative chips, with timber fencing.

## Situation

St Kilda Court is a pleasant residential area. Irvine town is close by and provides access to a range of amenities including supermarkets, bars, restaurants and town centre shopping. There are a number of local primary and secondary schools within the greater Irvine area. There is a regular bus and train service from Irvine to Ayr and Glasgow.

- Mid Terraced Villa
- Three Bedrooms
- Lounge/ Dining Room
- Downstairs WC
- Private Rear Garden
- Close to Schools
- Good Storage



3 Bedrooms



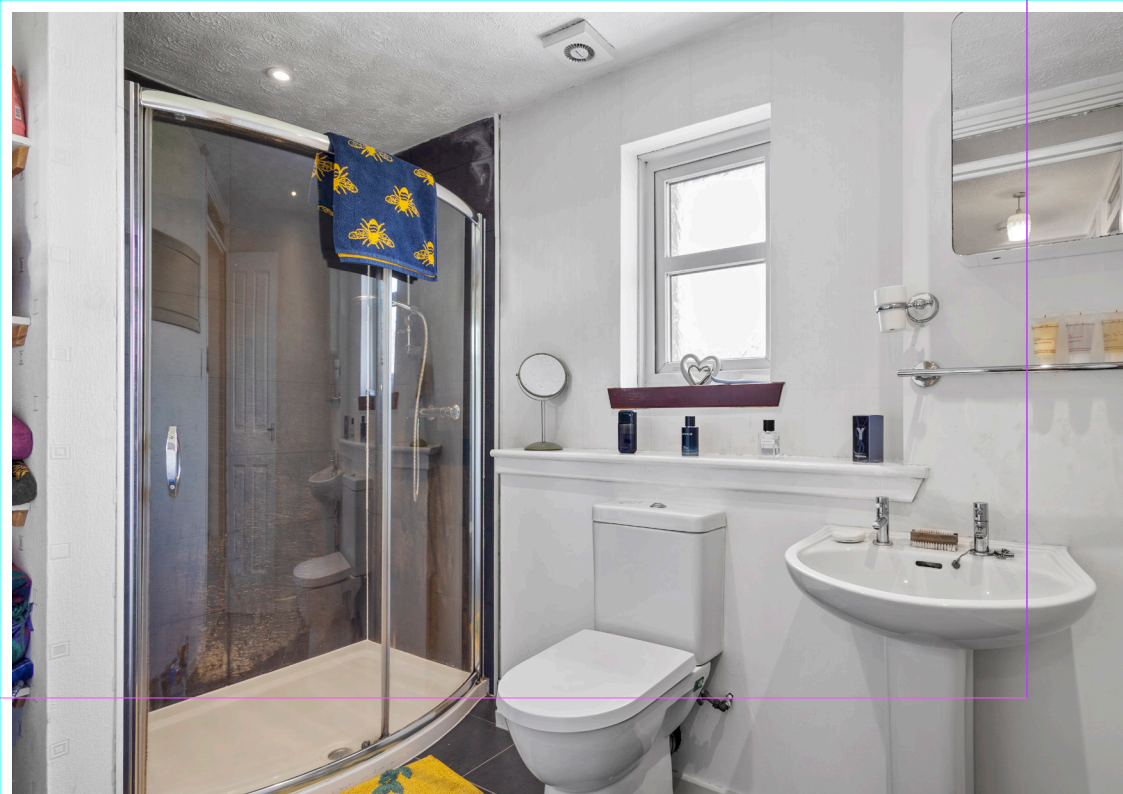
89 sqm

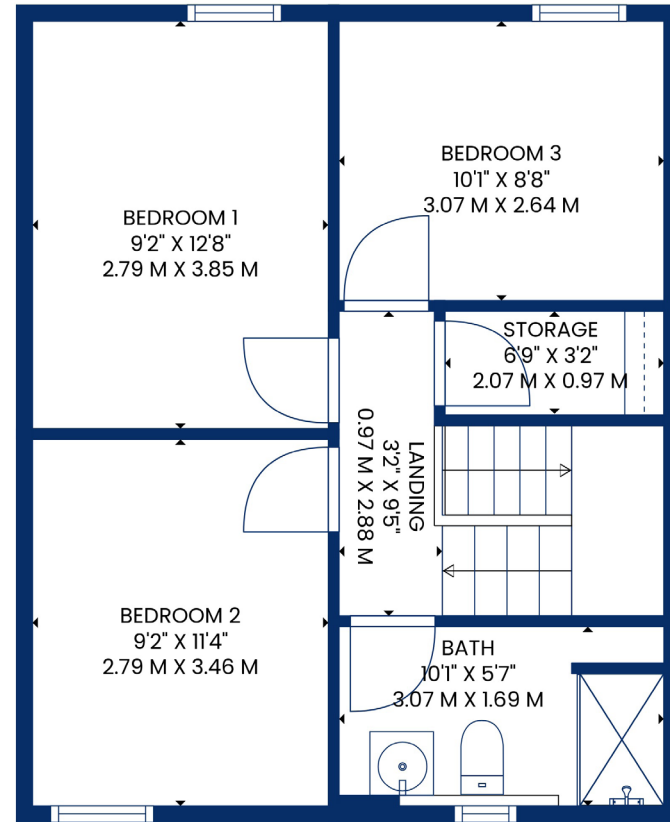
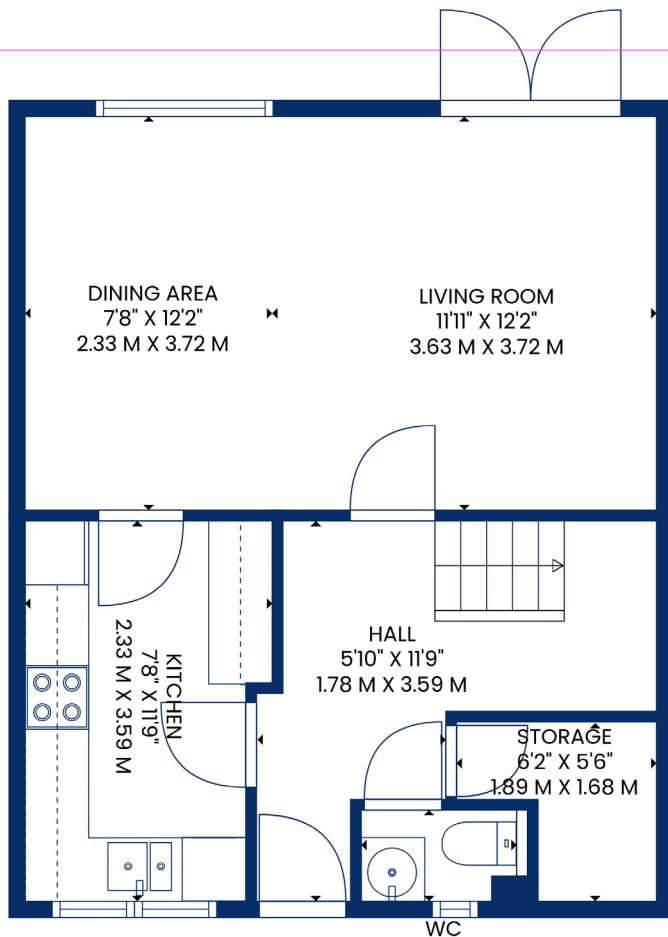


2 Public Rooms



EPC Rating B





**lomond**  
make yourself a home



51 Main Street, Prestwick  
01292 471511



52 Bank Street, Irvine  
01294 317013



Any error, omission, or misstatement in any part of this schedule shall not entitle the purchaser(s) or vendor(s) to entitlement to compensation or damages, nor in circumstances to give either party any cause for action. The selling agents have not tested services, equipment or fittings and are therefore unable to comment on their condition. Potential buyers are requested to contact their solicitor or surveyor if further clarification is required. Measurements are approximate for guidance purposes only and have been taken by a sonic beam and are measured from wall to wall at the widest point unless otherwise indicated. Photographs are reproduced for general information and it must not be inferred that any item is included in the sale.