



lomond

make yourself a home

67 Woodhill Crescent, Irvine KA11 1QR

Accommodation

Woodhill Crescent is located in the popular Girdle Toll area of Irvine. Number 67 is a well presented end terrace comprising two bedrooms, stylish lounge, recently fitted bathroom, and kitchen. There is parking to the front and easily maintained gardens to the rear. Further benefits include solar panels, double glazing and gas central heating.

In more detail, the entrance hallway vestibule has stairs leading to the upper level. The front facing lounge is stylish with modern décor and wall panels. To the rear the kitchen stretches the full width of the property, with integrated oven, hob, and hood. There is a large storage cupboard. Access to the garden is via the kitchen.

The upper level houses two bedrooms, and the recently fitted bathroom. Bedroom 1 features full length fitted wardrobes. Bedroom 2 is currently utilised as a working from home space but has been know to house a double bed; again fitted wardrobes are a feature. The bathroom has not long been upgraded, and comes with both bath and over shower with WC and WHB all finished to stylish tiling and new flooring.

Externally there is parking to the front, with easily maintained gardens to the rear laid mainly to patio slabbing and artificial grass with timber fence.

Situation

Girdle Toll is a pleasant residential area. Irvine town is close by and provides access to a range of amenities including supermarkets, bars, restaurants and town centre shopping. There are a number of local primary and secondary schools within the greater Irvine area. There is a regular bus and train service from Irvine to Ayr and Glasgow.

- End Terraced Villa
- Two Bedrooms
- Stylish Lounge
- Parking to Front
- Recently Upgraded Bathroom
- New Flooring
- Solar Panels



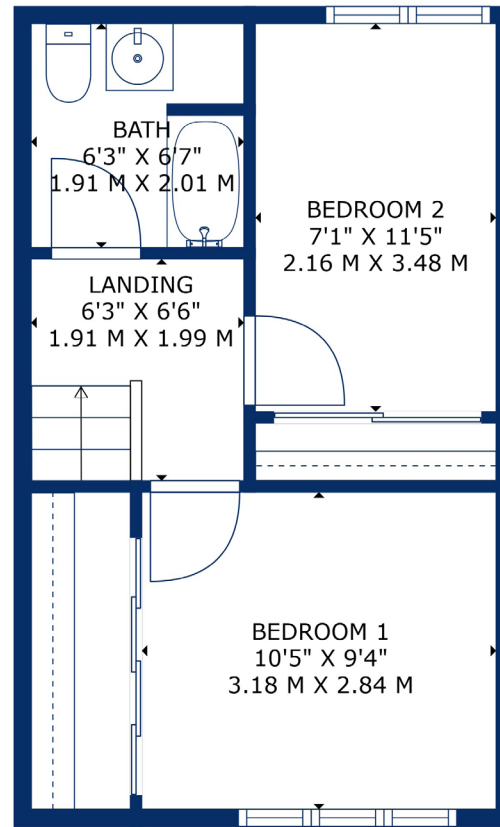
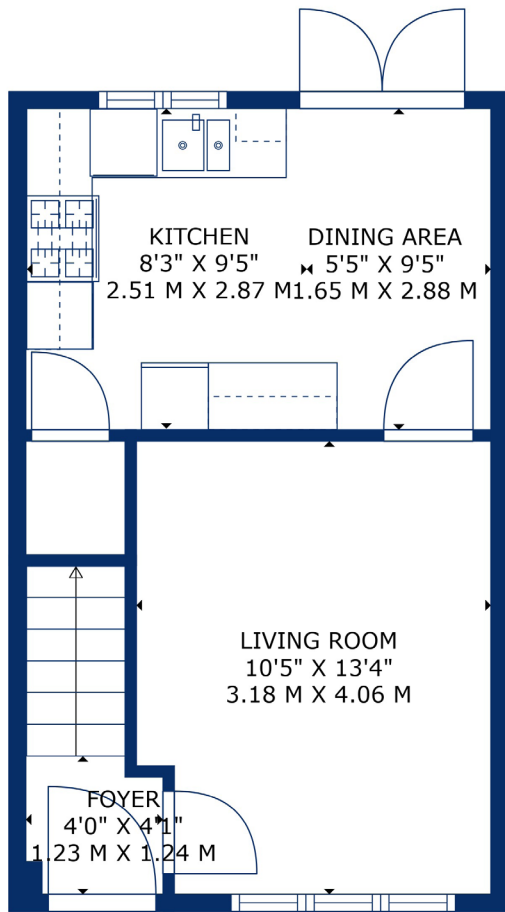
 2 Bedrooms

 58 sqm

 2 Public Rooms

 EPC Rating B





51 Main Street, Prestwick
01292 471511



52 Bank Street, Irvine
01294 317013



Any error, omission, or misstatement in any part of this schedule shall not entitle the purchaser(s) or vendor(s) to entitlement to compensation or damages, nor in circumstances to give either party any cause for action. The selling agents have not tested services, equipment or fittings and are therefore unable to comment on their condition. Potential buyers are requested to contact their solicitor or surveyor if further clarification is required. Measurements are approximate for guidance purposes only and have been taken by a sonic beam and are measured from wall to wall at the widest point unless otherwise indicated. Photographs are reproduced for general information and it must not be inferred that any item is included in the sale.