



680 sq
ft



2



1



1

REDBRIK
ESTATE AGENTS



Helping you find
your home at...

Jepson Road, Hasland, Chesterfield

Guide Price £125,000 to £135,000

£125,000 to £135,000 (Guide Price) Located on this sought after residential development in the popular suburb of Hasland is this neutrally decorated two bedroom ground floor apartment.

- Two Bedroom Ground Floor Apartment
- Modern Fitted Kitchen With Integrated Cooking Appliances
- Spacious Living Room With Electric Fire & Patio Doors
- No Onward Chain
- Modern Fitted Bathroom With White Suite
- Principal Bedroom With Fitted Wardrobes
- Allocated Residents Only Off Street Parking
- Communal Grounds
- Sought After Location
- Energy Rating - C - Leasehold 125 Years.





Deceptively spacious the property offers well ordered, flexible accommodation including a fantastic open plan living area, modern fitted kitchen and bathroom. Externally there are communal grounds and residents only allocated off street parking.

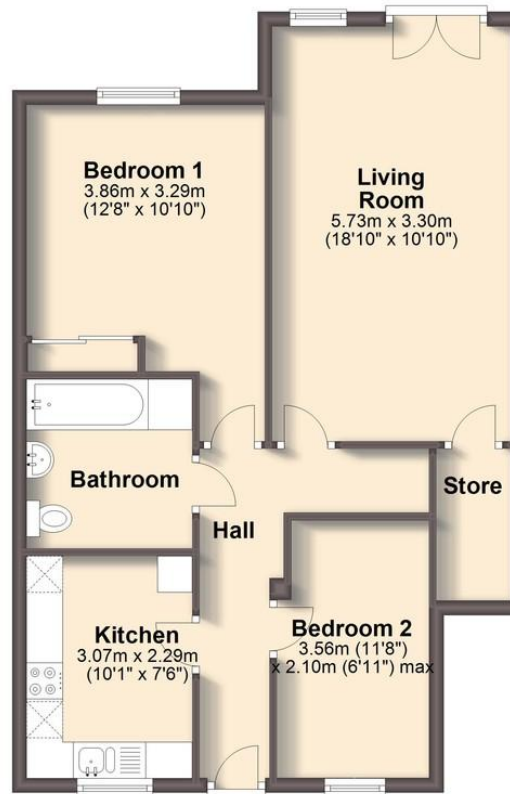
Ideally placed for transport links, bus services and a short distance from shops and amenities. Available with no onward chain.





Ground Floor

Approx. 63.3 sq. metres (680.9 sq. feet)



Total area: approx. 63.3 sq. metres (680.9 sq. feet)

We endeavour to make these particulars as accurate as possible, but they should only be used as guidance and they do not constitute any part of the contract. All measurements are approximate and no guarantees are made to the services, heating systems, appliances (if any) or fittings as to their working order and no warranty can be given or implied.

You may download, store and use this material for your own personal use and research. You may not republish, retransmit, redistribute or otherwise make the material available to any party or make the same available on any website, on or offline service or hard copy without the website owner's express written consent. The website owner's copy right must remain on all reproductions of material taken from this website.