



594 sq  
ft



3



1



1

**REDBRIK**  
ESTATE AGENTS



Helping you find  
your home at...

Cuttholme Way, Loundsley Green, Chesterfield

Guide Price £75,000 to £80,000



£75,000 to £80,000 (Guide Price) Located in the popular area of Loundsley Green is this three bedroom first floor apartment.

- Three Bedroom First Floor Apartment
- Modern Fitted Kitchen With Integrated Appliances
- Spacious Living Room
- Bathroom With Three Piece Suite
- Two Double Bedrooms, One Single
- 
- 
- Private Off Road Parking
- uPVC Double Glazing
- Energy Rating - D, Tenure; Leasehold.





This larger than average first floor apartment brings 594 sq ft of accommodation, the property benefits from a modern fitted kitchen with integrated appliances, a bright living room, three good sized bedrooms including two doubles and a fitted three piece bathroom. The property offers private off road parking, on the doorstep of this property is all the amenities you would need including; laundrette, grocers and beauticians. As well as being located with all the necessary transport links for Chesterfield.

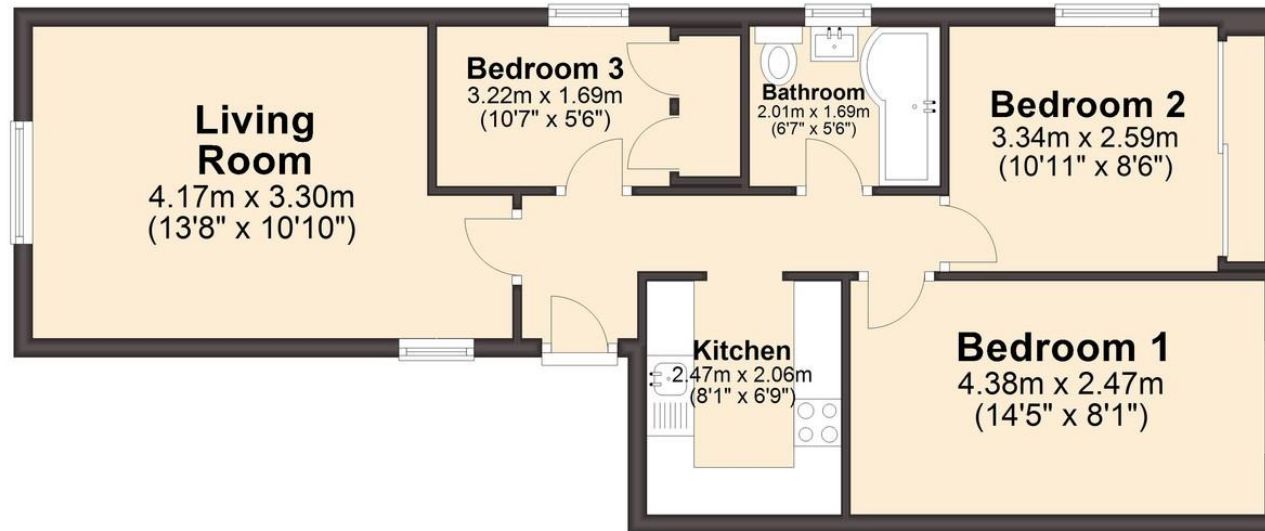






## First Floor

Approx. 55.2 sq. metres (594.5 sq. feet)



Total area: approx. 55.2 sq. metres (594.5 sq. feet)

We endeavour to make these particulars as accurate as possible, but they should only be used as guidance and they do not constitute any part of the contract. All measurements are approximate and no guarantees are made to the services, heating systems, appliances (if any) or fittings as to their working order and no warranty can be given or implied.

You may download, store and use this material for your own personal use and research. You may not republish, retransmit, redistribute or otherwise make the material available to any party or make the same available on any website, on or offline service or hard copy without the website owner's express written consent. The website owner's copy right must remain on all reproductions of material taken from this website.