



823 sq
ft



3



1



1

REDBRIK
ESTATE AGENTS 

Helping you find
your home at...

Churchside, Calow, Chesterfield
Guide Price £115,000 to £120,000

Guide Price £115,000 - £120,000. Located on a quiet cul-de-sac in the popular suburb of Calow is this three bedroom semi-detached house.

- Three Bedroom Semi Detached House
- Open Plan Kitchen/ Diner
- Fitted Kitchen With Integrated Cooking Appliances
- Spacious Lounge
- Fitted Bathroom With White Suite
- Low Maintenance Grounds
- Ideally Located
- Gas Central Heating
- uPVC Double Glazing
- Energy Rating TBC - Freehold.

Of possible interest to first time buyers or investors alike, the property is ideally suited to modern living providing well ordered accommodation set across two levels with further scope for a prospective purchaser to modernise and re-configure to their individual requirements and low maintenance grounds. Ideally placed for local amenities, shops, parks, schools and transport links.

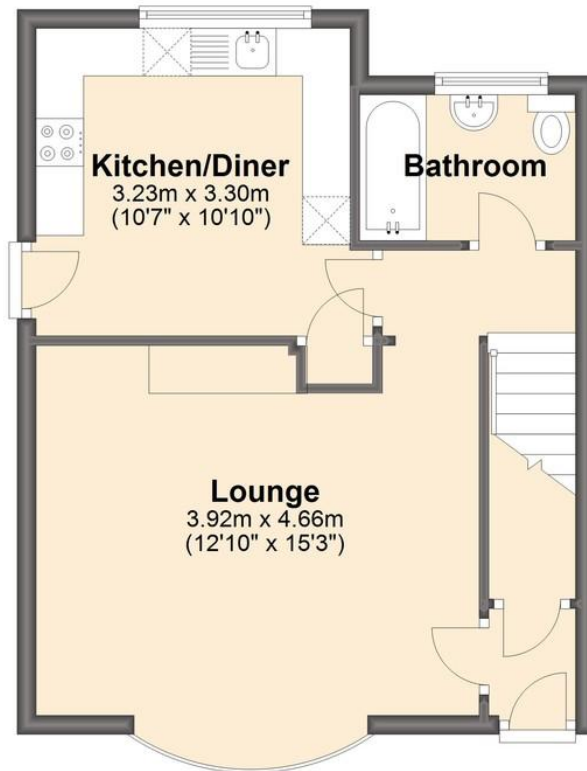




We endeavour to make these particulars as accurate as possible, but they should only be used as guidance and they do not constitute any part of the contract. All measurements are approximate and no guarantees are made to the services, heating systems, appliances (if any) or fittings as to their working order and no warranty can be given or implied.

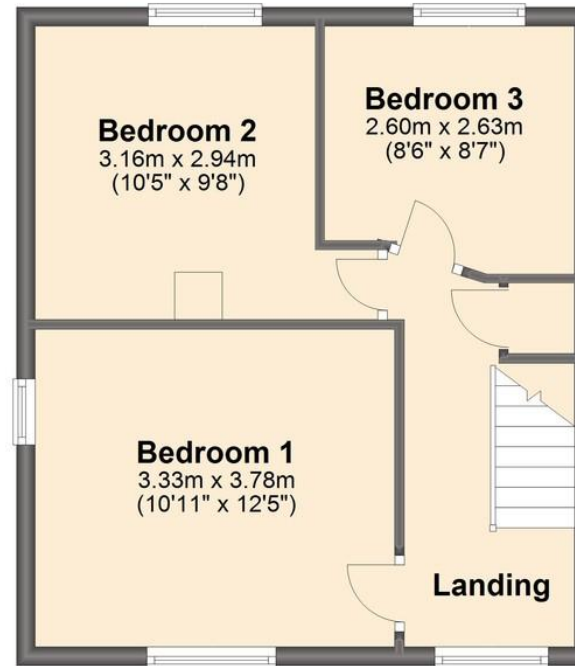
Ground Floor

Approx. 39.6 sq. metres (425.7 sq. feet)



First Floor

Approx. 36.9 sq. metres (397.4 sq. feet)



Total area: approx. 76.5 sq. metres (823.1 sq. feet)

You may download, store and use this material for your own personal use and research. You may not republish, retransmit, redistribute or otherwise make the material available to any party or make the same available on any website, on or off line service or hard copy without the website owner's express written consent. The website owner's copyright must remain on all reproductions of material taken from this website.

