



Culworth Court
Coventry , CV6 5JZ
Asking Price £79,950



SUMMARY

Two Bedroom First Floor Apartment located in Foleshill. A short drive to CBS Arena, the M6 motorway and Coventry City Centre. Good bus links into Coventry City Centre.

Private residents parking
Leasehold Property with 135 years left on lease
Ground rent of £40 per year
Maintenance of £100 per Calendar Month

THE PROPERTY

A two bedroom recently decorated apartment located on the first floor. The property comprises of:

- One double bedroom and one single bedroom.
- Double Glazed Windows.
- A bathroom with electric shower, toilet and sink. .
- A good sized living room/ diner.
- A kitchen with a built in breakfast bar maximizing the space on offer with a kitchen sink
- Vendor happy to leave white goods shown on pictures for buyer
- Many windows allowing lots of natural light into the apartment
- Store cupboard with hot water tank

LOCATION

The apartment is located close to the Foleshill Road in Coventry and is perfectly placed to reach both the City Centre, The Coventry Building Society Arena (formerly known as Ricoh Arena) and the M6.

Local shops and amenities are right on the door step with the nearest major supermarket just 5-minutes away by car.

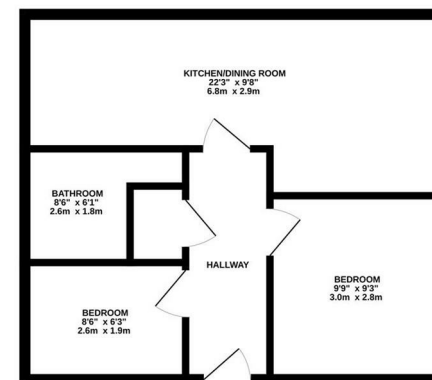
The location is ideal for anyone wanting the convenience of City Centre living or to be close to the motorway for commuters.

For a family Edgwick Park is next to the apartment with a number of schools nearby

ADDITIONAL INFORMATION

Council Tax Band A.
Vacant possession

1ST FLOOR
433 sq.ft. (40.2 sq.m.) approx.



52 CULWORTH COURT, COVENTRY, CV5 6JZ - FLOOR PLAN
TOTAL FLOOR AREA: 433 sq.ft. (40.2 sq.m.) approx.

| Energy Efficiency Rating | | Environmental Impact (CO ₂) Rating | |
|--|---------|---|---------|
| Current | Nextest | Current | Nextest |
| <p>100-150 kWh/m² A</p> <p>90-100 kWh/m² B</p> <p>80-90 kWh/m² C</p> <p>70-80 kWh/m² D</p> <p>60-70 kWh/m² E</p> <p>50-60 kWh/m² F</p> <p>40-50 kWh/m² G</p> <p>Not energy efficient - higher running costs</p> <p>EU Directive 2002/91/EC</p> <p>England & Wales</p> | | <p>100-150 g/m² A</p> <p>90-100 g/m² B</p> <p>80-90 g/m² C</p> <p>70-80 g/m² D</p> <p>60-70 g/m² E</p> <p>50-60 g/m² F</p> <p>40-50 g/m² G</p> <p>Not environmentally friendly - higher CO₂ emissions</p> <p>EU Directive 2002/91/EC</p> <p>England & Wales</p> | |
| | 82 | | |
| | 59 | | |