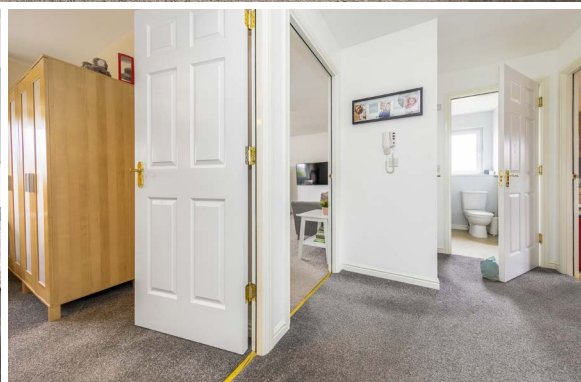




4E Whitehouse Way
GOREBRIDGE | MIDLOTHIAN | EH23 4FP


warners
solicitors & estate agents



4E Whitehouse Way

GOREBRIDGE | MIDLOTHIAN | EH23 4FP

Beautifully presented top floor apartment with two bedrooms, occupying an extremely pleasant position within this sought-after modern (Persimmon Homes) development located in the popular Gorebridge area, just a short drive from Edinburgh.

This bright and spacious apartment offers well-planned and proportioned accommodation with a fantastic open outlook to the front. The accommodation is spacious throughout with a modern fitted kitchen and bathroom, finished to a high standard. Externally there is a bicycle and bin store along with an allocated parking space and ample visiting parking. Early viewing is highly recommended.

- Entrance hall with storage cupboards
- Spacious bay windowed living room
- Separate fitted kitchen / breakfast room
- Two double bedrooms
- Modern fitted bathroom with mains shower over bath
- Gas central heating
- Double glazing
- Attic storage – partially floored
- Private parking space
- Communal external storage / bike & bin storage
- Attractive landscaped gardens
- Secure door entry system

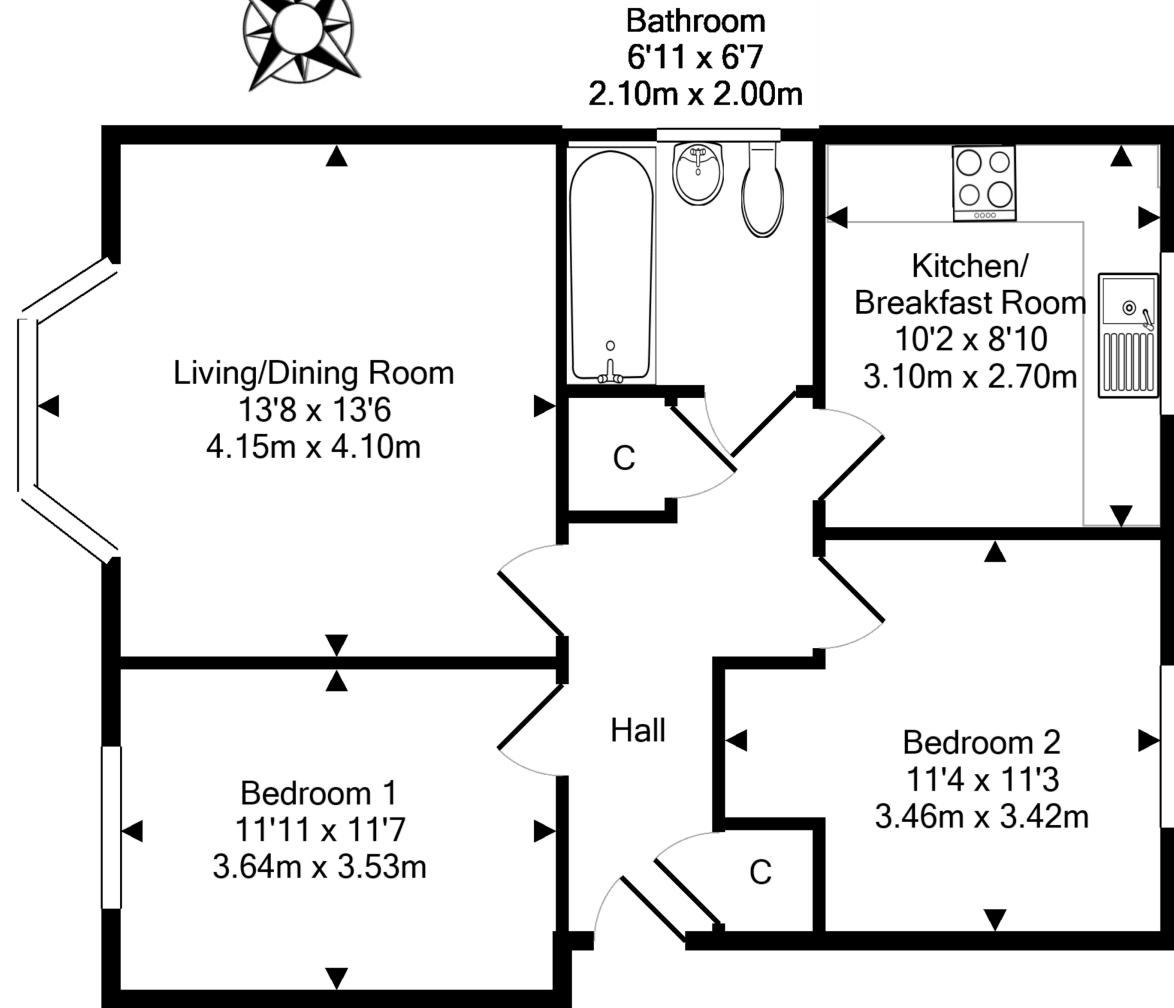
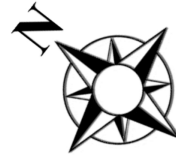
All fitted floor coverings and all blinds will be included in the sale. EPC Rating B.

PRICE & VIEWING: Please refer to our website, www.warnersllp.com or call us on 0131 667 0232.



The increasingly popular Midlothian town of Gorebridge lies within easy commuting distance of Edinburgh. There is a good range of amenities in the vicinity, including local shops and a leisure centre, with further facilities available at Newtongrange and Bonnyrigg. An efficient public transport network is on hand for journeys within the town and to other areas. The A7 main road is just minutes away, linking up with the city bypass and main motorway networks. The new Borders Railway link, which allows journeys between Tweedbank in the Borders and Edinburgh Waverley, includes a station at Gorebridge,





For details of the total internal floor area, please refer to the property's Home Report. This plan is for illustrative purposes only and should be used as such by a prospective purchaser.
Made with Metropix ©2020