



7 Northbank Court
BO'NESS | WEST LOTHIAN | EH51 9TL


warners
solicitors & estate agents



7 Northbank Court

BO'NESS | WEST LoTHIAN | EH51 9TL

Well presented two-bedroom end terraced home set over two floors with landscaped front and rear private gardens, situated in Bo'ness, a popular town located on the southern banks of the Firth of Forth.

Downstairs, there is a spacious living room with plenty of space for dining and a fitted kitchen currently with gas hob, oven and fan and also housing the boiler. There is also access out into the rear garden. Upstairs on the first floor there are two well-proportioned bedrooms both with built in storage and completing the accommodation is the bathroom. Further benefits on offer include gas central heating, double glazing, front and rear gardens, the rear benefitting from a shed, lawn and patio and at the front a driveway giving off street parking.

- Entrance Hall
- Spacious living room with space for dining
- Fitted kitchen with access to the rear garden
- Two well proportioned Bedrooms
- Bathroom
- Landscaped front and rear gardens
- Gas central heating and double glazing
- Front driveway giving off street parking

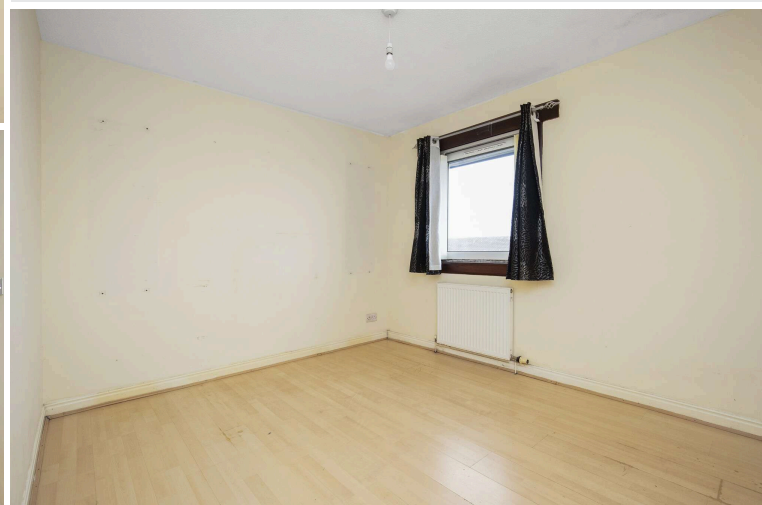
The property will be sold as seen with no warranties given.

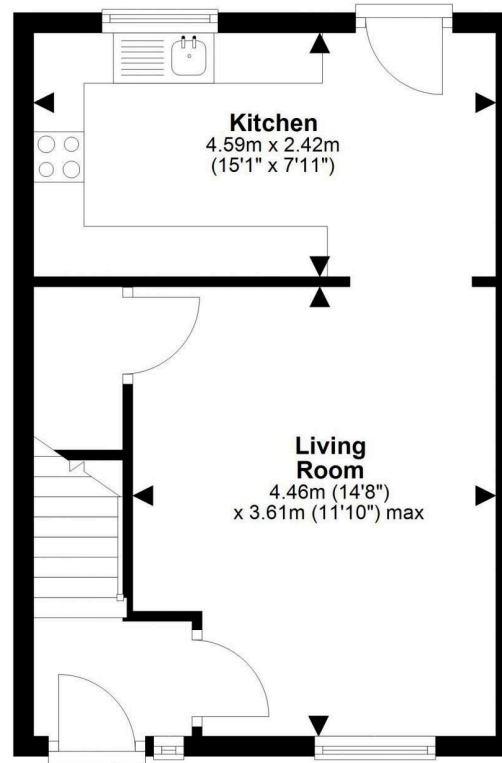
EPC Rating C.

PRICE & VIEWING: Please refer to our website, www.warnersllp.com or call us on 0131 667 0232.

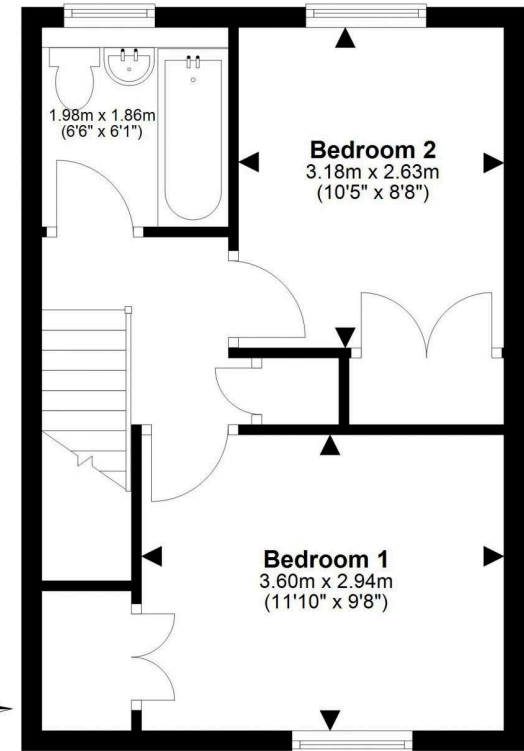


The property is located in Bo'ness, a popular town located on the southern banks of the Firth of Forth. The town is well served by a good range of local amenities including schools, shops and recreational facilities. Within the town itself, there is a post office, Tesco superstore and both primary and secondary schools. Bo'ness is popular with the commuter, with regular bus services to Edinburgh, Linlithgow and outlying areas. Rail services to both Edinburgh and Glasgow are available from nearby Linlithgow. There is also easy access to road links including the M8 and M9 motorway networks.





Ground Floor



First Floor



For details of the total internal floor area, please refer to the Home Report.
This plan is for illustrative purposes only and should be used as such by a prospective buyer.