



32 Maltman Street, Niddrie
NIDDRIE | EDINBURGH | EH16 4XL



32 Maltman Street, Niddrie

NIDDRIE | EDINBURGH | EH16 4XL

Fantastic opportunity to purchase this stunning three-bedroom mid-terraced house in Edinburgh's area of Niddrie with private gardens and driveway. Situated in a desirable location, it provides easy access to local amenities, schools, the Royal Infirmary and transportation links. The property is presented to market in walk in condition representing light, spacious and contemporary accommodation over two floors. The property features a large sitting room, which serves as a versatile space for relaxation and entertainment. The room is well-lit, featuring large windows that allow natural light to illuminate the area. Adjacent to the sitting room is a separate kitchen/dining room, equipped with modern appliances, ample storage cabinets, and countertops, providing an efficient and functional space for culinary activities. This area is designed to accommodate both cooking and dining needs, with plenty of room for a dining table and chairs. From the kitchen/dining room, French doors give direct access to the fully enclosed southerly facing private rear garden, which features an intimate patio area, perfect for al fresco dining and relaxing in the sun. Conveniently located on the ground floor is a handy WC, offering additional convenience and practicality for residents and guests. Moving to the upper level, you will find three good sized bedrooms, the master bedroom benefits from integrated storage and ensuite shower room, providing privacy and convenience. In addition to the ensuite, there is a family bathroom on the upper level boasting a stylish three piece suite, shower over bath. Overall, this three-bedroom mid-terraced house offers a comfortable and well-designed living space, perfect for a wide range of buyer. In brief it comprises:

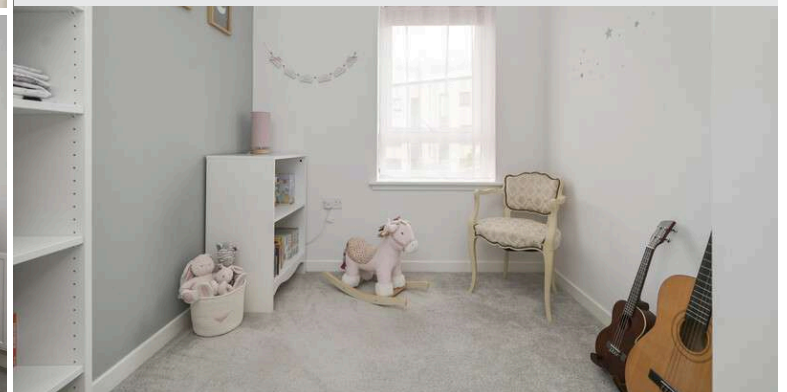
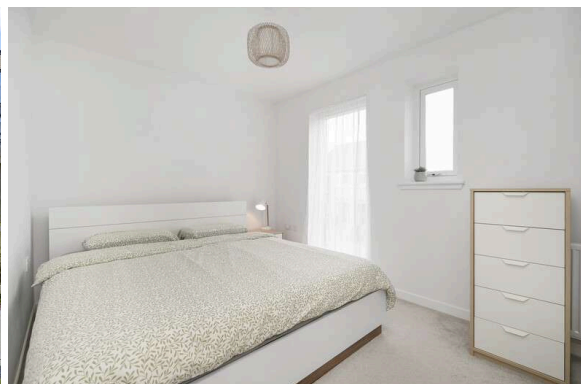
- Welcoming hallway
- Spacious living room with large windows
- Separate modern kitchen/diner with direct access to private rear garden and two good sized storage cupboards
- Handy WC on the lower level
- Three spacious bedrooms with the master bedroom featuring a modern en suite shower room
- Contemporary family bathroom with stylish three piece, shower over bath

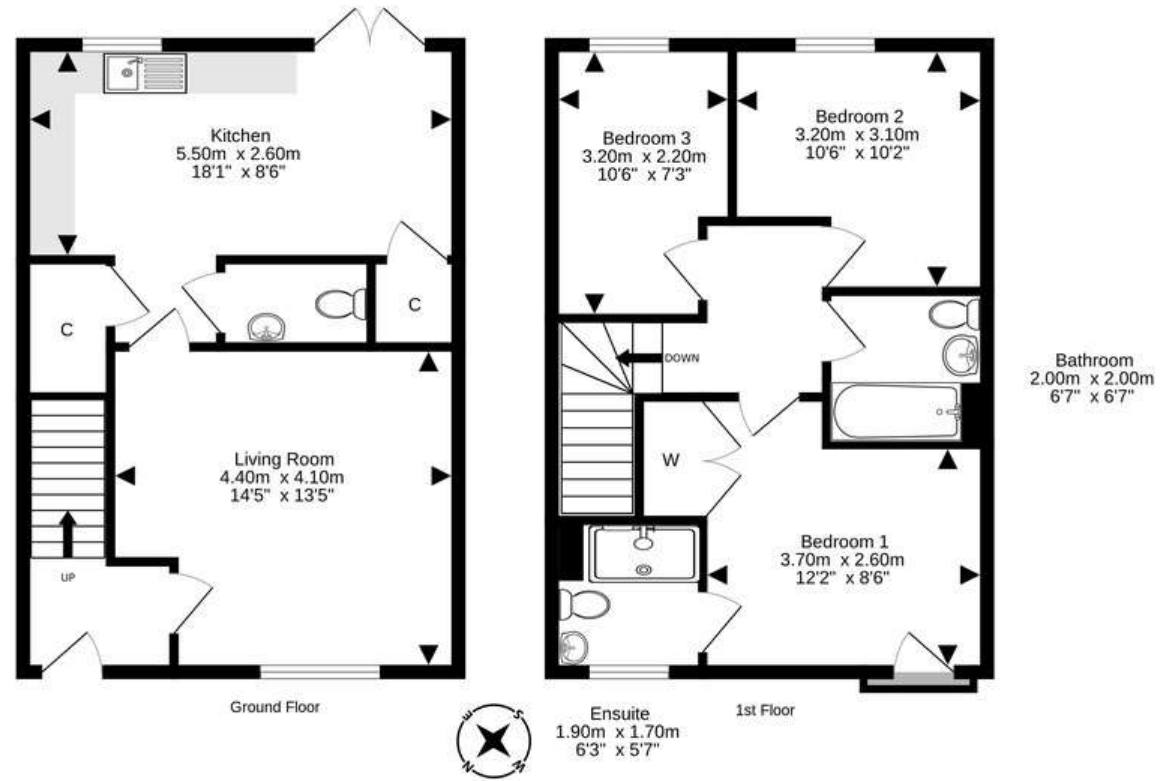
PRICE & VIEWING: Please refer to our website, www.warnersllp.com or call us on 0131 667 0232.



All integrated kitchen appliances including dishwasher and washing machine, along with curtains and blinds will be included in the sale of the property. EPC: B

The popular Niddrie area of Edinburgh offers a good range of small specialist shops serving the local community, a Lidl store, a doctors and chemist, all located along Niddrie Mains Road. Just a little further afield is the impressive Fort Kinnaird leisure park, where you can find an excellent choice of high street names, eateries and a cinema, and there's also a large Asda superstore at the Jewel. The property is close to the green open space of Hunter's Hall Park, home to the Jack Kane Sports Centre. One of Edinburgh's famous landmarks, Arthur's Seat, sits within Holyrood Park, just a short journey away and ideal for scenic walks and excellent views across the City skyline. Schooling is well represented from nursery to senior level and the property is conveniently positioned for those connected to Edinburgh Royal Infirmary. An efficient public transport network is on hand, which operates to most parts of the town and surrounding areas. The City Bypass and main motorway networks are also within easy reach.





For details of the total internal floor area, please refer to the property's Home Report. This plan is for illustrative purposes only and should be used as such by a prospective purchaser. Made with Metropix ©2024