



WAYNE  
& SILVER

Elgin Avenue, London W9 1HT

---

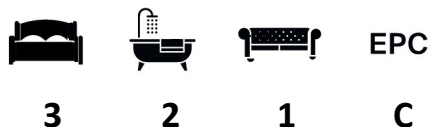
WAYNE  
& SILVER

# Elgin Avenue, London W9 1HT

A beautifully renovated three-bedroom, two-bathroom apartment set within the sought-after Biddulph Mansions in Maida Vale. This stunning home offers modern interiors whilst retaining the charm of a classic mansion block.

The apartment comprises three generously sized double bedrooms, including a master with en-suite shower room, and a further contemporary family bathroom. A spacious eat-in kitchen provides an ideal space for dining and entertaining, while the bright reception room leads onto a charming private balcony. Additional features include a storage cupboard and high ceilings, enhancing both practicality and character.

Biddulph Mansions is set in the heart of Maida Vale, a leafy and desirable neighbourhood renowned for its elegant mansion blocks and tree-lined avenues. Just a short walk from Maida Vale Underground Station (Bakerloo Line), it offers excellent links into central London. The area is well served by boutique shops, cafés, and restaurants on Clifton Road and Elgin Avenue, with Paddington Recreation Ground and the picturesque canals of Little Venice providing green spaces and waterside walks nearby.



**Guide price:** £4,100 Per Month

**Tenure:**

**Service Charge:** Add text here

**Local Authority:**

**Council Tax Band:** E





WARNING  
This balcony railing is low  
You use this balcony  
at your own risk

WAYNE  
& SILVER

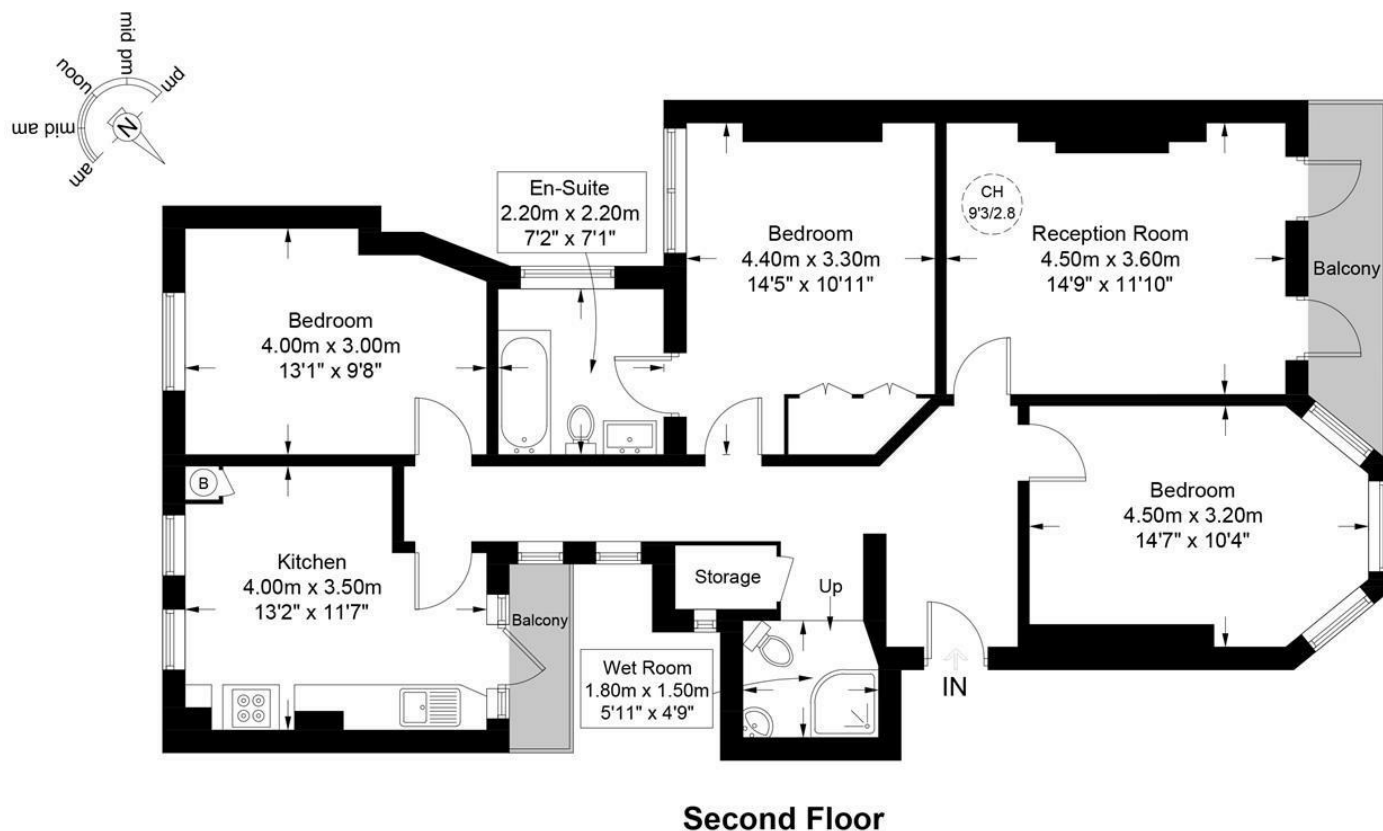


WAYNE  
& SILVER



## Biddulph Mansions, W9

Approximate Gross Internal Area = 1021 sq ft / 94.9 sq m



This plan is for layout guidance only and is not drawn to scale unless stated. All dimensions, including windows, doors, and the Total Gross Internal Area (GIA), are approximate. For precise measurements, please consult a qualified architect or surveyor before making any decisions based on this plan.



41 Heath Street  
Hampstead  
London  
NW3 6UA

We would be delighted to tell you more  
020 7431 4488  
[info@wayne-silver.com](mailto:info@wayne-silver.com)

[wayne-silver.com](http://wayne-silver.com)

**Important Notice:** Wayne & Silver, its clients and any joint agents give notice that 1: They are not authorised to make or give any representations or warranties in relation to the property either here or elsewhere, either on their own behalf or on behalf of their client or otherwise. They assume no responsibility for any statement that may be made in these particulars. These particulars do not form part of any offer or contract and must not be relied upon as statements or representations of fact. 2: Any areas, measurements or distances are approximate. The text, photographs and plans are for guidance only and are not necessarily comprehensive. It should not be assumed that the property has all necessary planning, building regulation or other consents and Wayne & Silver have not tested any services, equipment or facilities. Purchasers must satisfy themselves by inspection or otherwise.